



Regenerative Valves

Section 7

SECTION 9

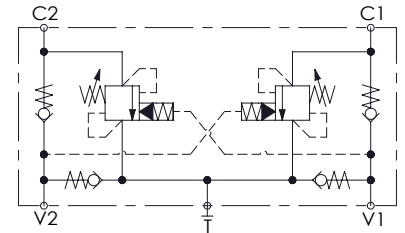
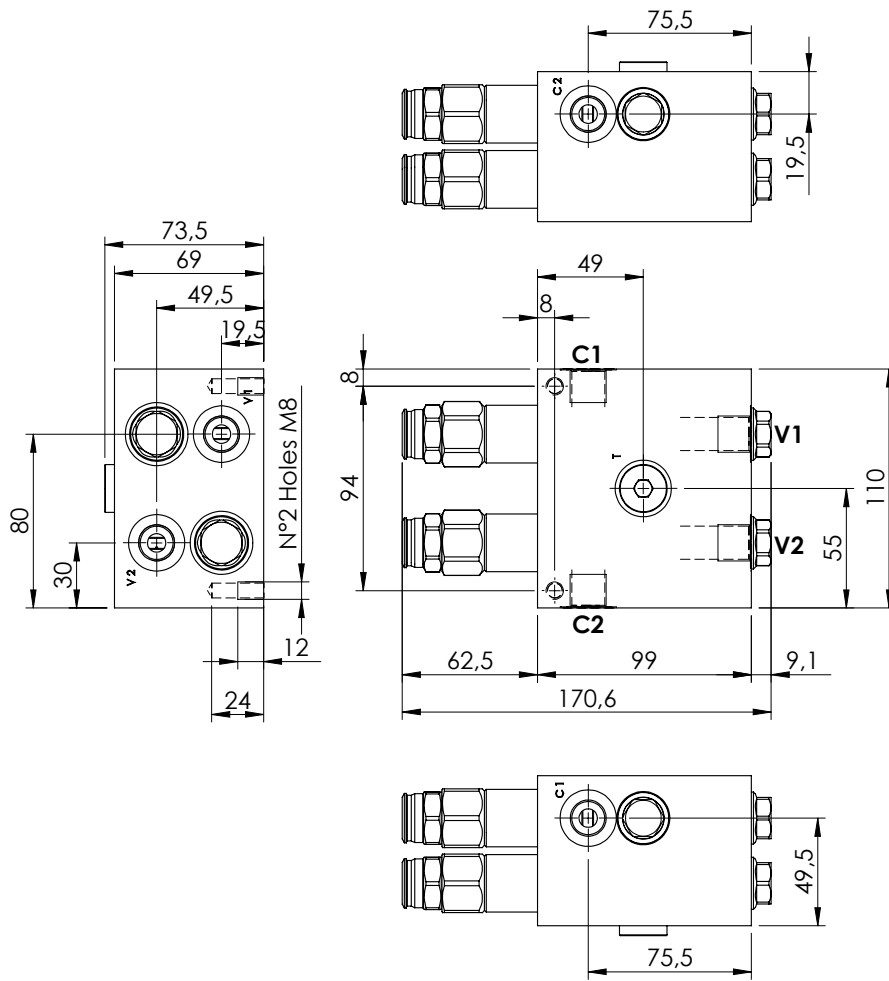
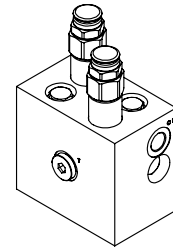
MOTION CONTROL VALVES



Hydraulic scheme	Valve description	Valve type	Rated flow (l/min)	Max. pressure (bar)	Installation	Main port size	Page
	MNDN-040-LLST	Stabilized	40	350	In line	G 3/8"	9.01.010
	MNDN-120-LLST	Stabilized	120	350	In line	G 3/4"	9.01.020
	MNDN-200-LLST	Stabilized	200	350	In line	G 1"	9.01.030
	MNDN-040-LLSV	Stabilized, with brake release	40	350	In line	G 3/8"	9.02.040
	MNDN-120-LLSV	Stabilized, with brake release	120	350	In line	G 3/4"	9.02.050
	MNDN-200-LLSV	Stabilized, with brake release	200	350	In line	G 1"	9.02.060
	MNDN-040-LLPT	Stabilized and brake, dual setting	40	350	In line	G 3/8"	9.03.070
	MNDN-120-LLPT	Stabilized and brake, dual setting	120	350	In line	G 3/4"	9.03.080
	MNDN-200-LLPT	Stabilized and brake, dual setting	200	350	In line	G 1"	9.03.090
	MNDN-040-LLPV	Stabilized and brake, dual setting, with brake release	40	350	In line	G 3/8"	9.03.100
	MNDN-120-LLPV	Stabilized and brake, dual setting, with brake release	120	350	In line	G 3/4"	9.03.110
	MNDN-200-LLPV	Stabilized and brake, dual setting, with brake release	200	350	In line	G 1"	9.03.120

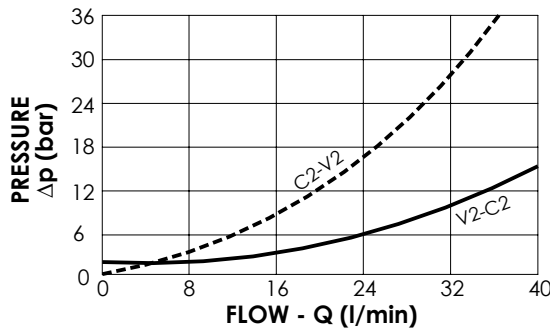
MNDN-040-LLST

STABILIZED



SPECIFICATIONS

Max. operating pressure:	300 bar
Rated flow:	40 l/min
Manifold:	Aluminium
Weight:	2,65 kg



NOTES

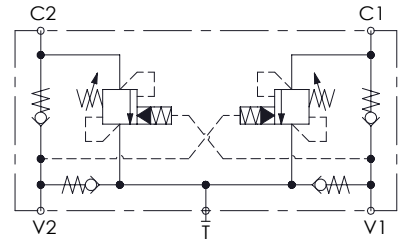
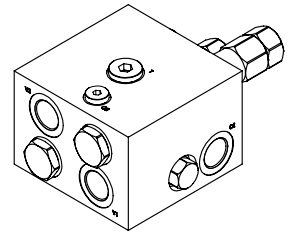
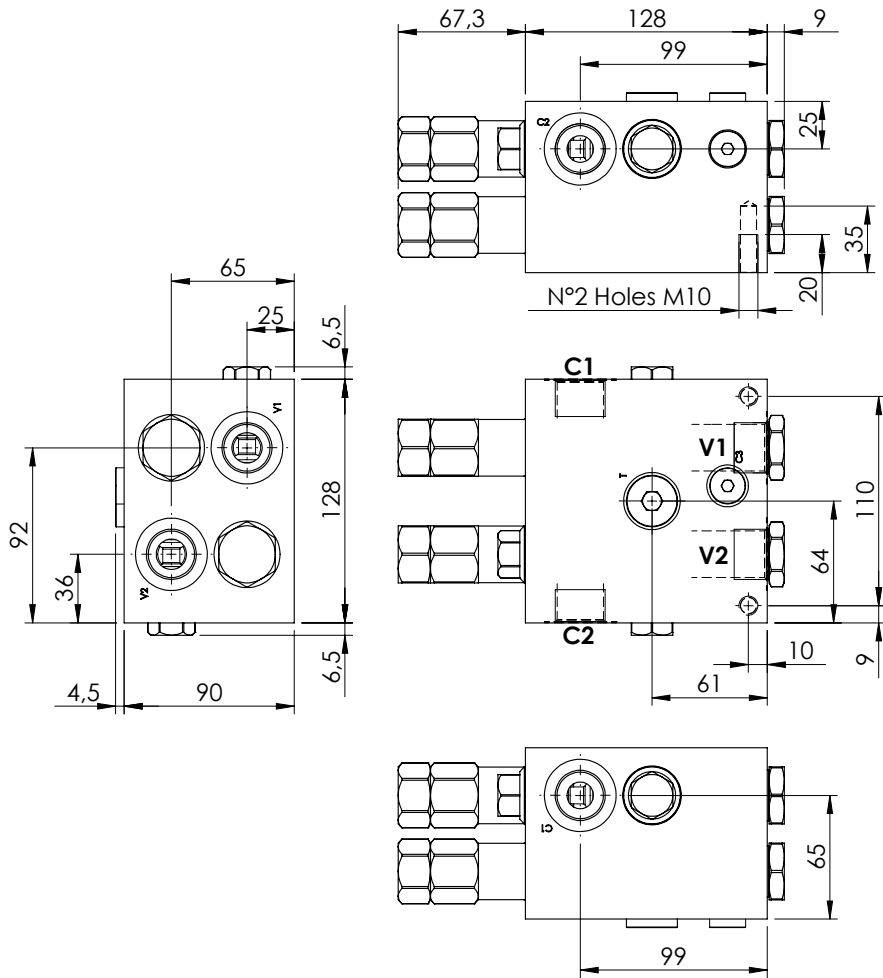
Setting: at least 1.3 times the load induced pressure

ORDERING CODES

Quick code	Description	Pilot ratio	Main ports size	Standard setting (bar, Q=5 l/min)	Adjust. range (bar)	Pressure increase (bar/turn)
MN000023	MNDN-040-LLST-09-G38-N300	9:1	V1,V2,C1,C2: G 3/8" T: G 3/8"	150	100-300	119
MN000029	MNDN-040-LLST-03-G38-N300	3:1	V1,V2,C1,C2: G 3/8" T: G 3/8"	150	100-300	119

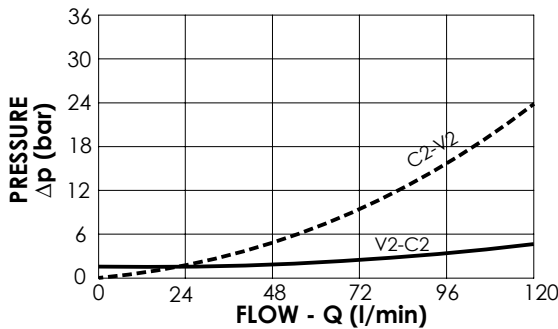
MNDN-120-LLST

STABILIZED



SPECIFICATIONS

Max. operating pressure:	300 bar
Rated flow:	120 l/min
Manifold:	Aluminium
Weight:	5,05 kg



NOTES

Setting: at least 1.3 times the load induced pressure

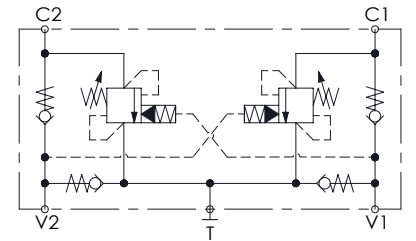
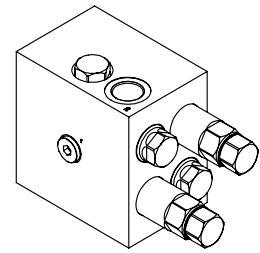
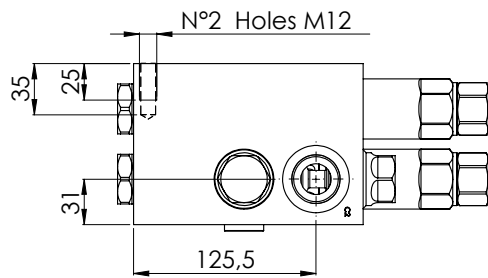
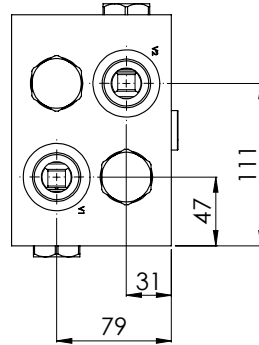
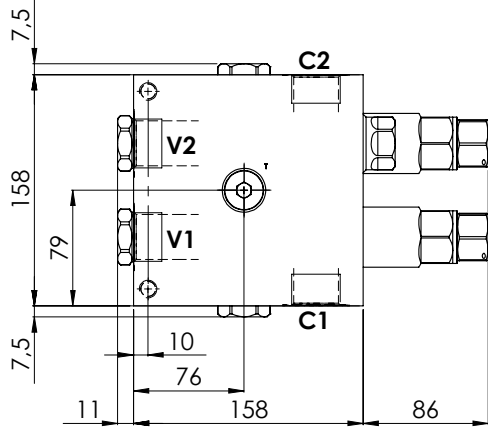
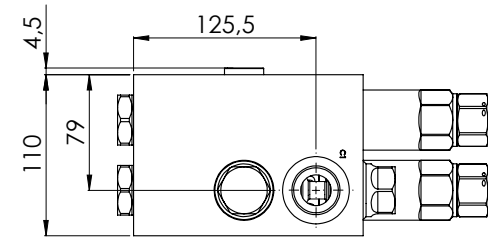
ORDERING CODES

Quick code	Description	Pilot ratio	Main ports size	Standard setting (bar, Q=5 l/min)	Adjust. range (bar)	Pressure increase (bar/turn)
MN000013	MNDN-120-LLST-08-G34-N300	8:1	V1,V2,C1,C2 : G3/4" T : G 1/2"	150	100-300	111
MN000012	MNDN-120-LLST-03-G34-N300	3:1	V1,V2,C1,C2 : G3/4" T : G 1/2"	150	70-210	73

MOTION CONTROL

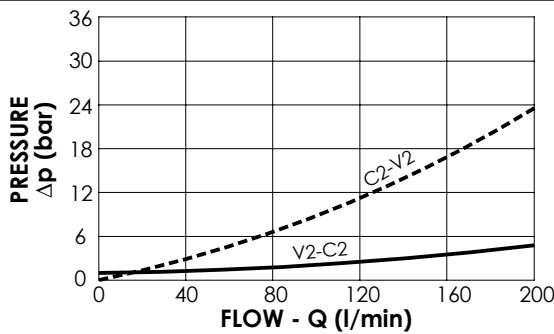
MNDN-200-LLST

STABILIZED



SPECIFICATIONS

Max. operating pressure:	300 bar
Rated flow:	200 l/min
Manifold:	Aluminium
Weight:	9,74 kg



NOTES

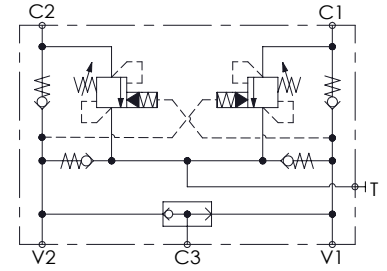
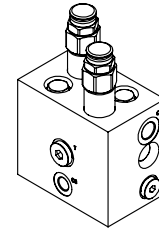
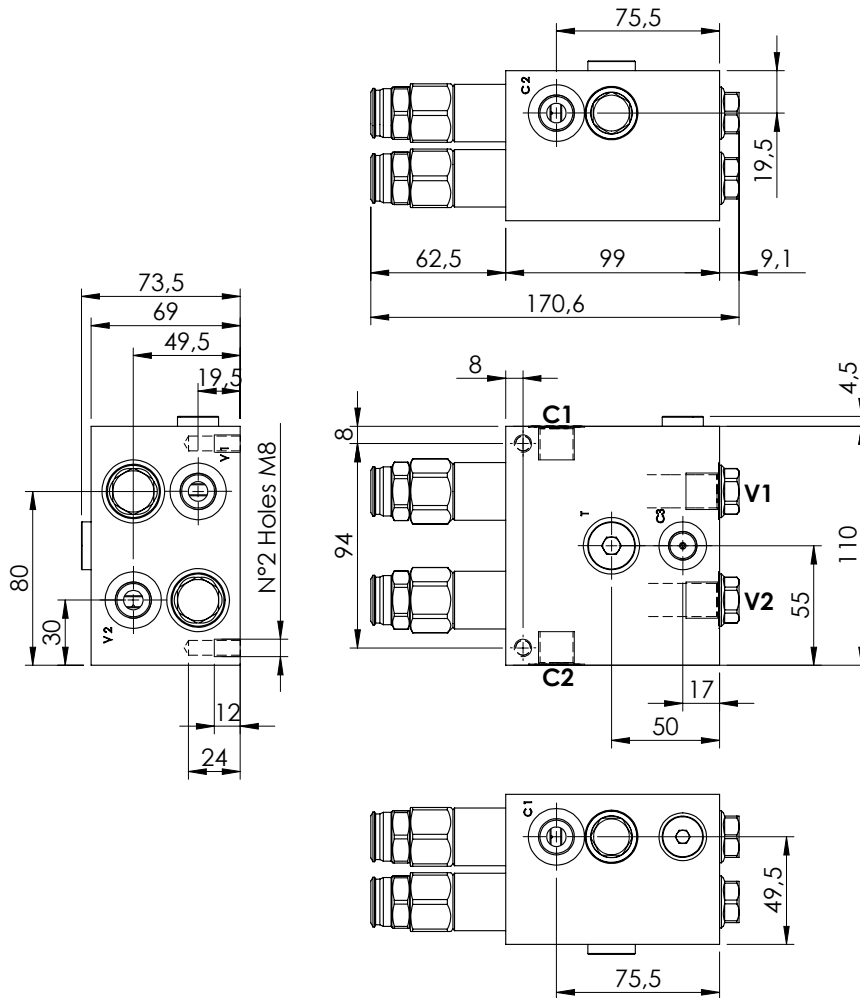
Setting: at least 1.3 times the load induced pressure

ORDERING CODES

Quick code	Description	Pilot ratio	Main ports size	Standard setting (bar, Q=5 l/min)	Adjust. range (bar)	Pressure increase (bar/turn)
MN000020	MNDN-200-LLST-08-G10-N300	8:1	V1,V2,C1,C2: G1" T: G1/2"	150	120-300	65

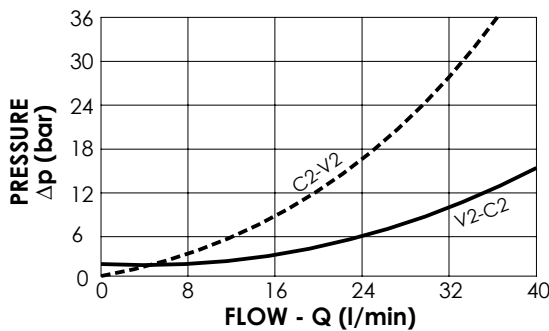
MNDN-040-LLSV

STABILIZED
WITH BRAKE RELEASE



SPECIFICATIONS

Max. operating pressure:	300 bar
Rated flow:	40 l/min
Manifold:	Aluminium
Weight:	2,66 kg



NOTES

Setting: at least 1.3 times the load induced pressure

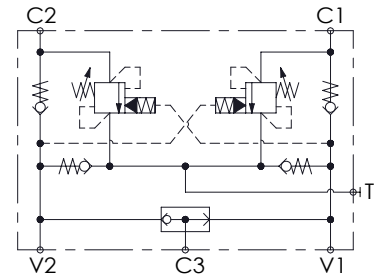
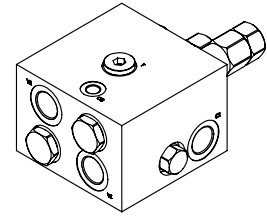
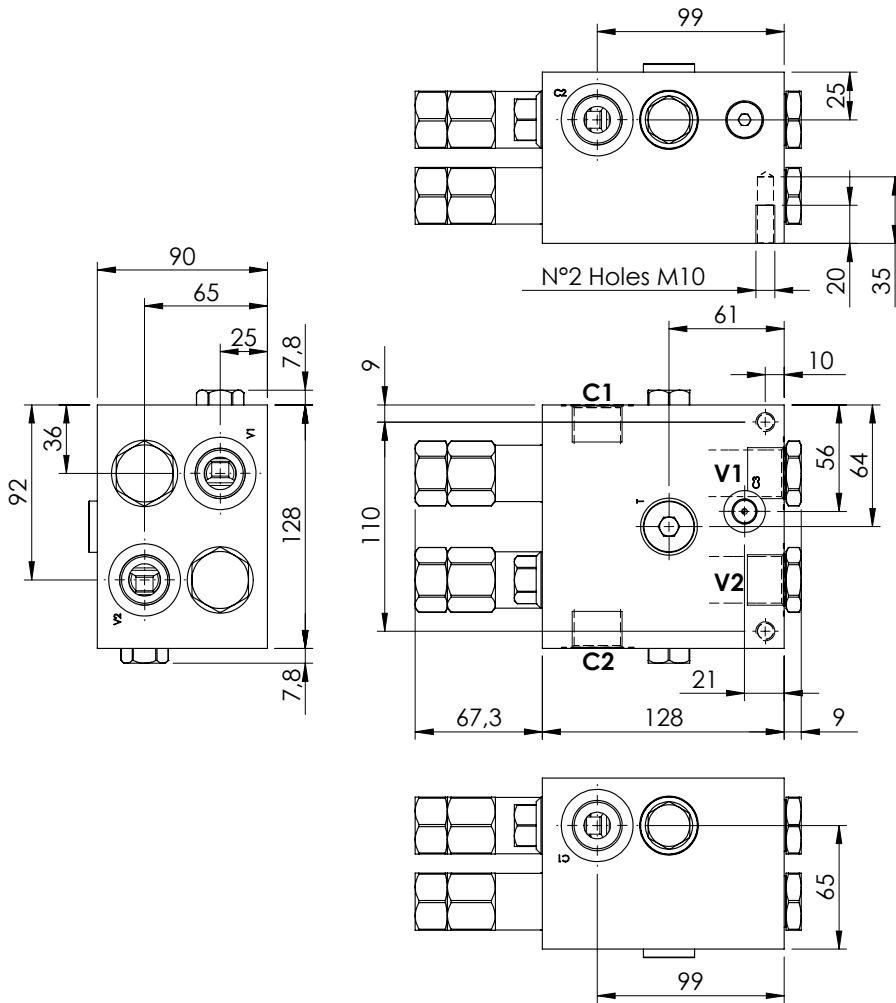
ORDERING CODES

Quick code	Description	Pilot ratio	Main ports size	Standard setting (bar, Q=5 l/min)	Adjust. range (bar)	Pressure increase (bar/turn)
MN000008	MNDN-040-LLSV-09-G38-N300	9:1	V1,V2,C1,C2,T: G 3/8" C3: G 1/4"	150	100-300	119
MN000032	MNDN-040-LLSV-09-G38-N200	9:1	V1,V2,C1,C2,T: G 3/8" C3: G 1/4"	150	70-150	63
MN000033	MNDN-040-LLSV-03-G38-N300	3:1	V1,V2,C1,C2,T: G 3/8" C3: G 1/4"	150	100-300	119
MN000034	MNDN-040-LLSV-03-G38-N200	3:1	V1,V2,C1,C2,T: G 3/8" C3: G 1/4"	150	70-150	63

MOTION CONTROL

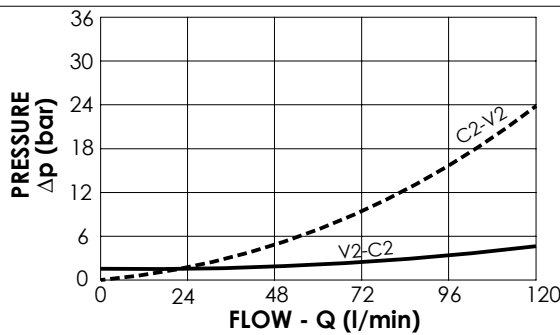
MNDN-120-LLSV

STABILIZED
WITH BRAKE RELEASE



SPECIFICATIONS

Max. operating pressure:	300 bar
Rated flow:	120 l/min
Manifold:	Aluminium
Weight:	5,03 kg



NOTES

Setting: at least 1.3 times the load induced pressure

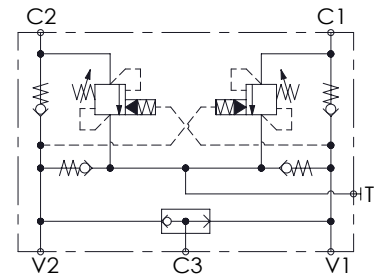
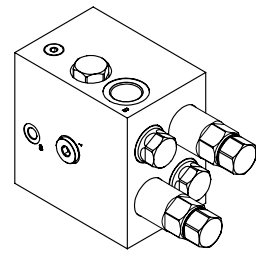
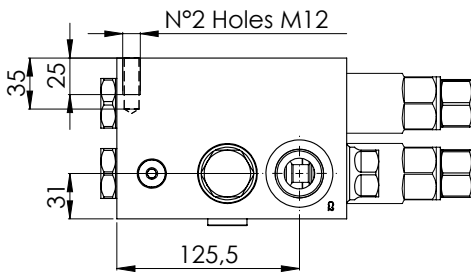
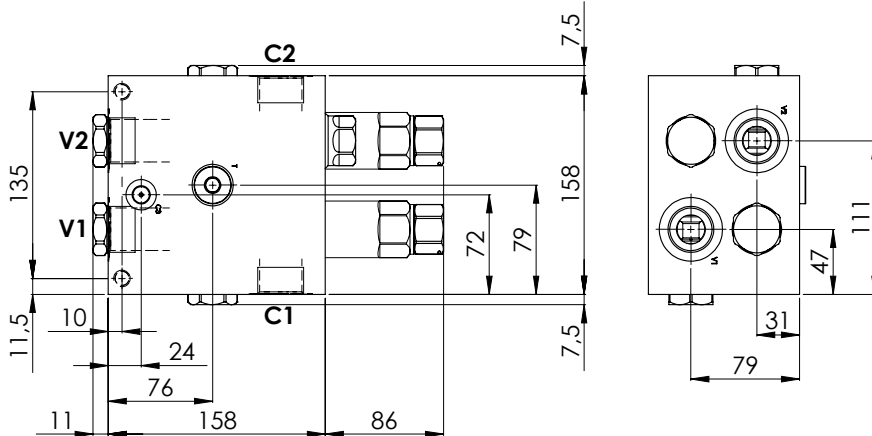
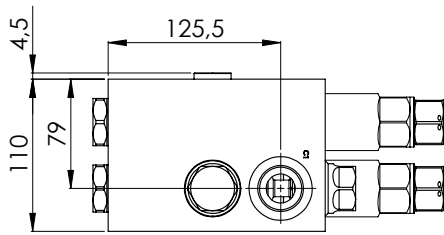
ORDERING CODES

Quick code	Description	Pilot ratio	Main ports size	Standard setting (bar, Q=5 l/min)	Adjust. range (bar)	Pressure increase (bar/turn)
MN000014	MNDN-120-LLSV-08-G34-N300	8:1	V1,V2,C1,C2: G 3/4" T: G 1/2"; C3: G 1/4"	150	100-300	111
MN000015	MNDN-120-LLSV-03-G34-N300	3:1	V1,V2,C1,C2: G 3/4" T: G 1/2"; C3: G 1/4"	150	100-300	111

MOTION CONTROL

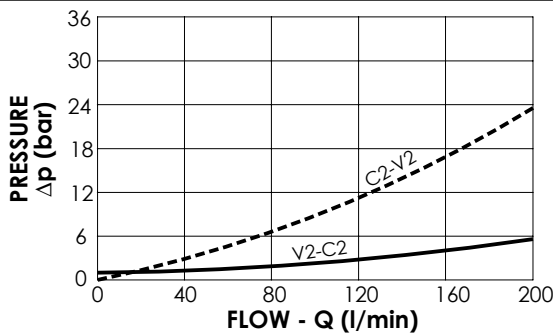
MNDN-200-LLSV

STABILIZED
WITH BRAKE RELEASE



SPECIFICATIONS

Max. operating pressure:	300 bar
Rated flow:	200 l/min
Manifold:	Aluminium
Weight:	9,56 kg



NOTES

Setting: at least 1.3 times the load induced pressure

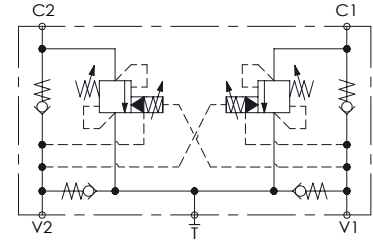
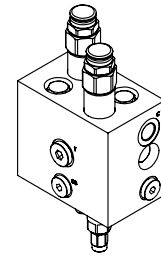
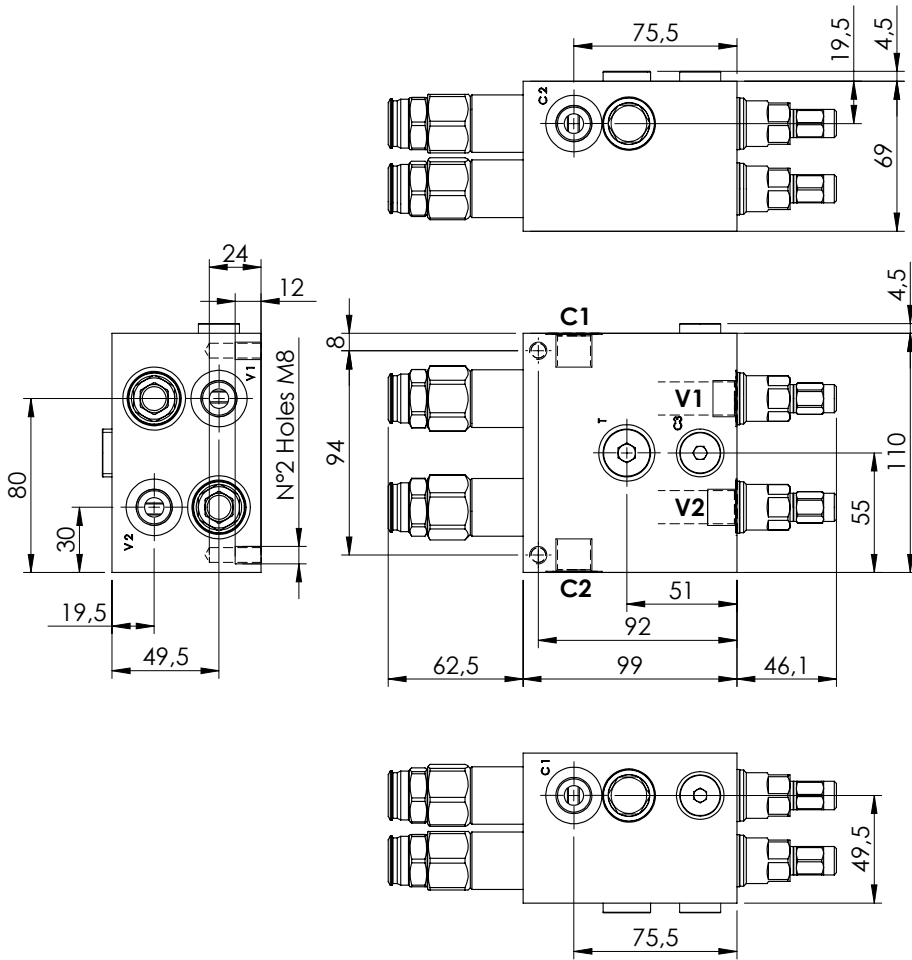
ORDERING CODES

Quick code	Description	Pilot ratio	Main ports size	Standard setting (bar, Q=5 l/min)	Adjust. range (bar)	Pressure increase (bar/turn)
MN000021	MNDN-200-LLSV-08-G10-N300	8:1	V1,V2,C1,C2: G1" T: G1/2"; C3: G 1/4"	150	120-300	65

MOTION CONTROL

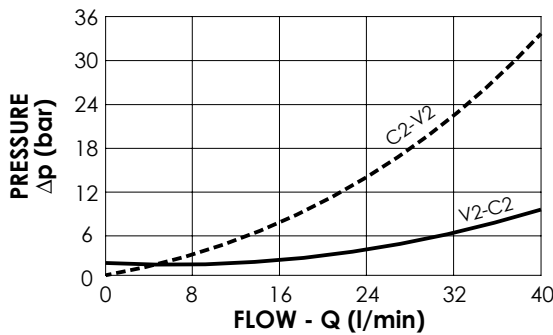
MNDN-040-LLPT

SOFT STOP
DUAL SETTING



SPECIFICATIONS

Max. operating pressure:	300 bar
Rated flow:	40 l/min
Manifold:	Aluminium
Weight:	2,79 kg



NOTES

Setting: at least 1.3 times the load induced pressure

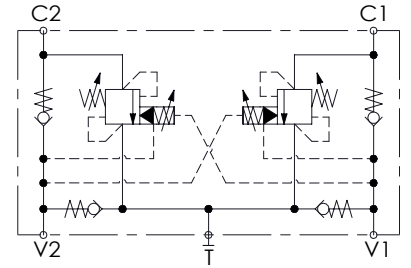
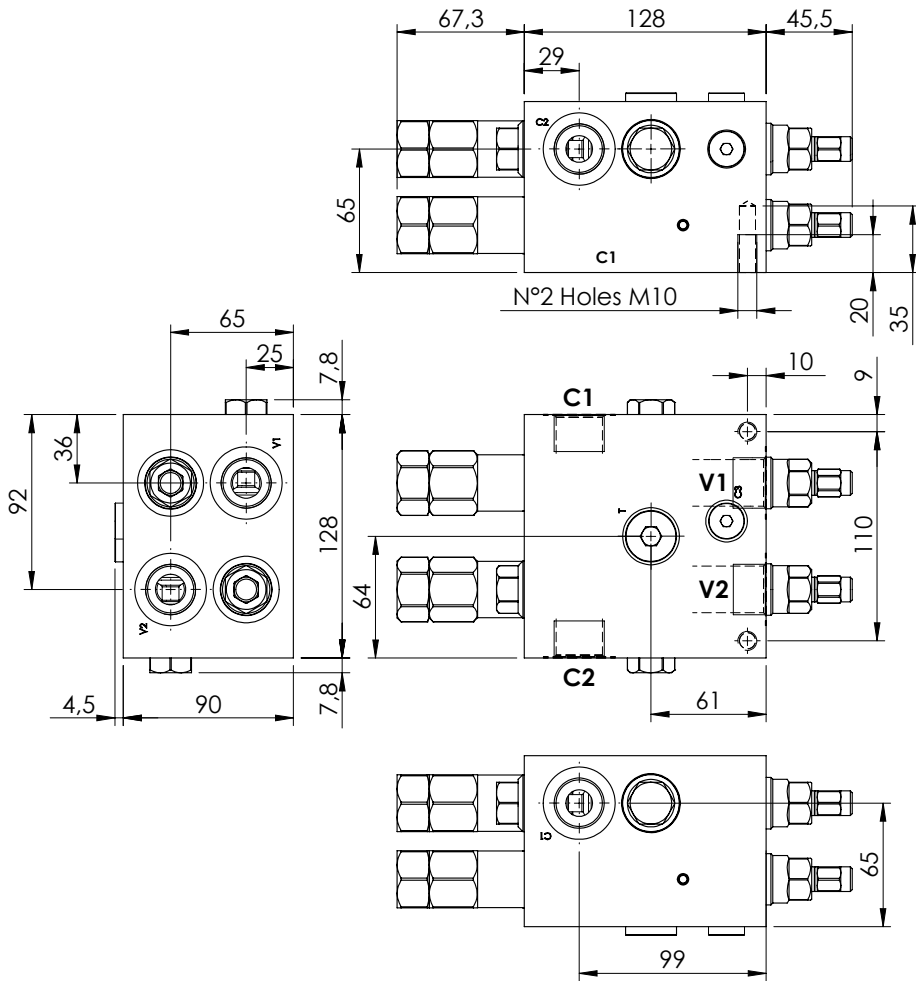
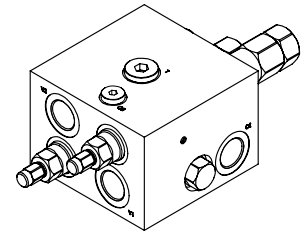
ORDERING CODES

Quick code	Description	Pilot ratio	Main ports size	Standard setting (bar, Q=5 l/min)	Adjust. range (bar)	Pressure increase (bar/turn)
MN000024	MNDN-040-LLPT-09-G38-N300	9:1	V1,V2,C1,C2: G3/8" T: G3/8"	Start: 300 Brake: 120	100-300	119

MOTION CONTROL

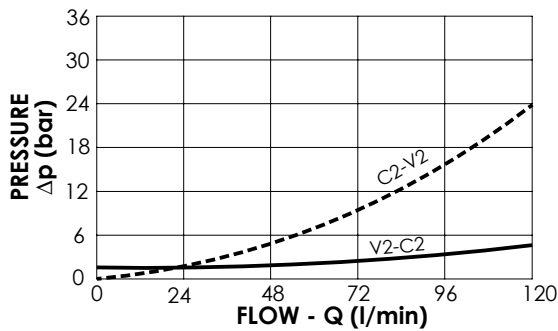
MNDN-120-LLPT

SOFT STOP
DUAL SETTING



SPECIFICATIONS

Max. operating pressure:	300 bar
Rated flow:	120 l/min
Manifold:	Aluminium
Weight:	5,13 kg



NOTES

Setting: at least 1.3 times the load induced pressure

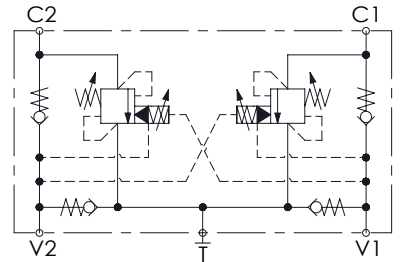
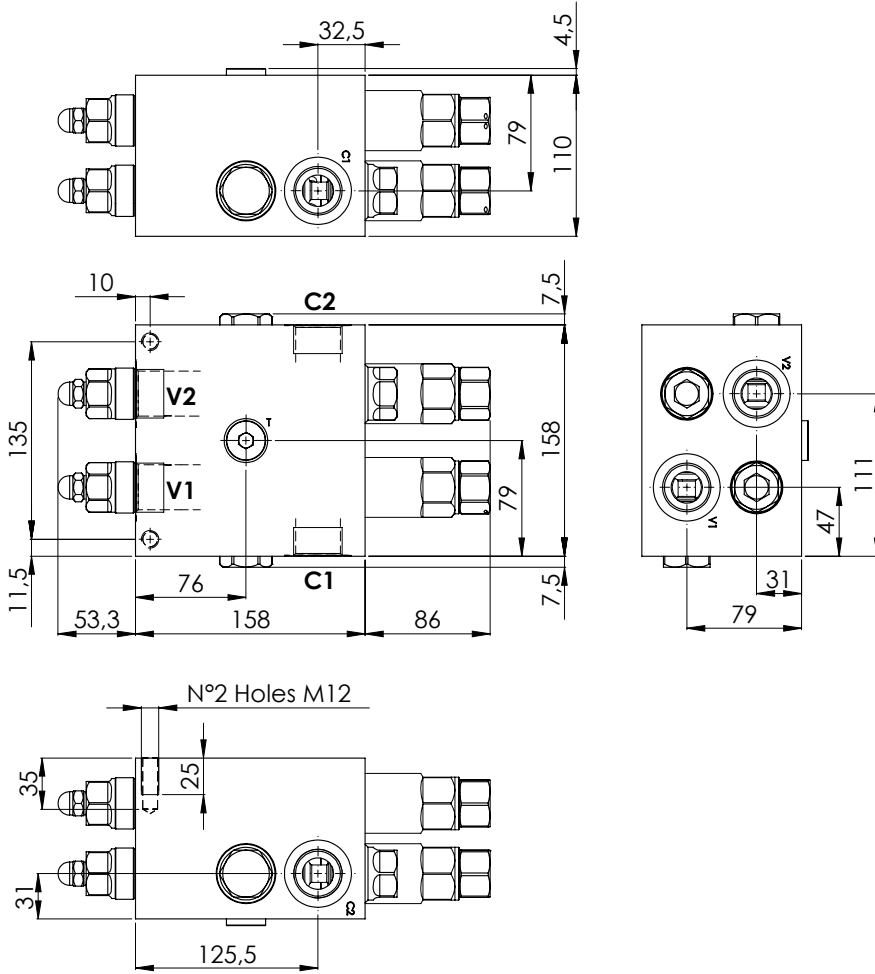
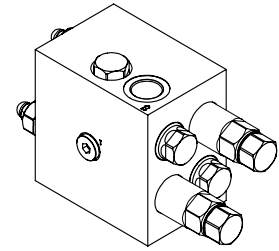
ORDERING CODES

Quick code	Description	Pilot ratio	Main ports size	Standard setting (bar, Q=5 l/min)	Adjust. range (bar)	Pressure increase (bar/turn)
MN000017	MNDN-120-LLPT-08-G34-N300	8:1	V1,V2,C1,C2 : G3/4" T : G 1/2"	Start: 300 Brake: 120	100-300	107
MN000047	MNDN-120-LLPT-03-G34-N300	3:1	V1,V2,C1,C2 : G3/4" T : G 1/2"	Start: 300 Brake: 120	100-300	107
MN000016	MNDN-120-LLPT-03-G34-N200	3:1	V1,V2,C1,C2 : G3/4" T : G 1/2"	Start: 180 Brake: 90	70-210	73

MOTION CONTROL

MNDN-200-LLPT

SOFT STOP
DUAL SETTING

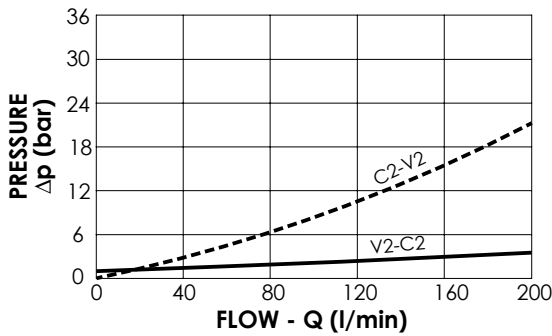


SPECIFICATIONS

Max. operating pressure:	300 bar
Rated flow:	200 l/min
Manifold:	Aluminium
Weight:	9,8 kg

NOTES

Setting: at least 1.3 times the load induced pressure

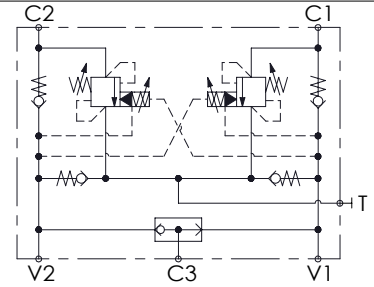
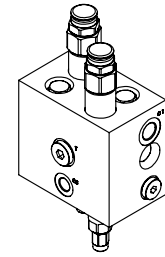
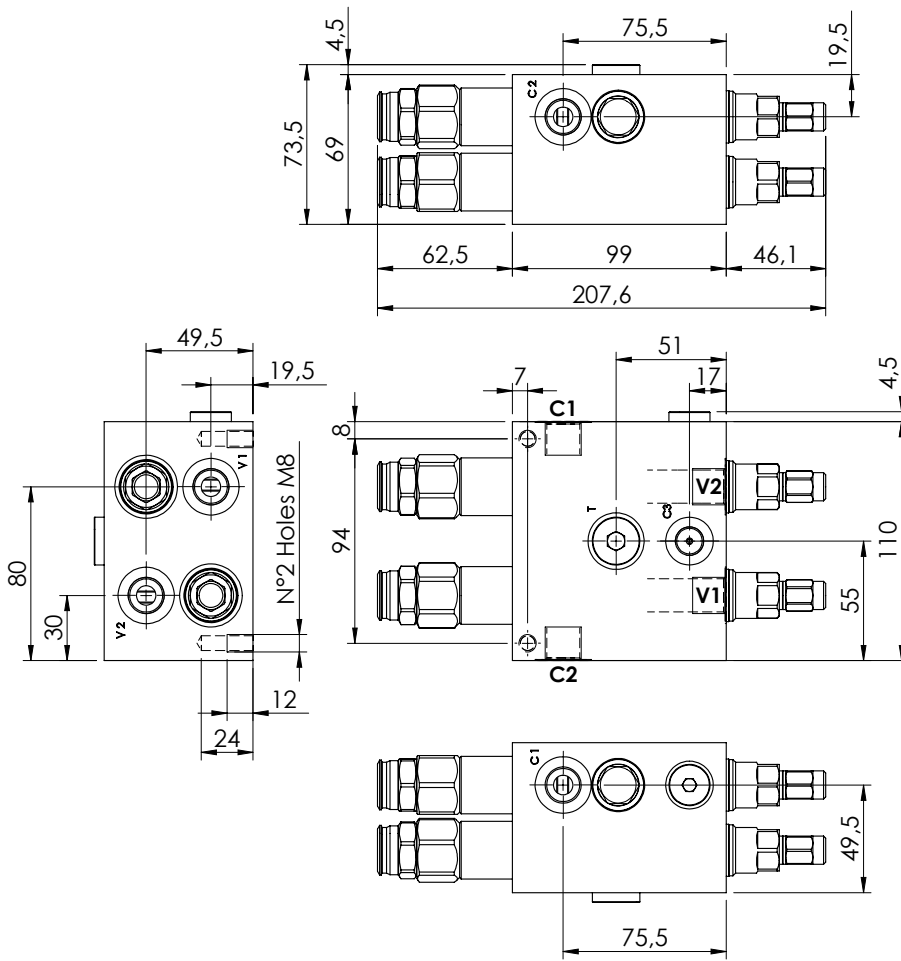


ORDERING CODES

Quick code	Description	Pilot ratio	Main ports size	Standard setting (bar, Q=5 l/min)	Adjust. range (bar)	Pressure increase (bar/turn)
MN000004	MNDN-200-LLPT-08-G10-N300	8:1	V1,V2,C1,C2 : G1" T : G1/2"	Start: 300 Brake: 120	120-300	65

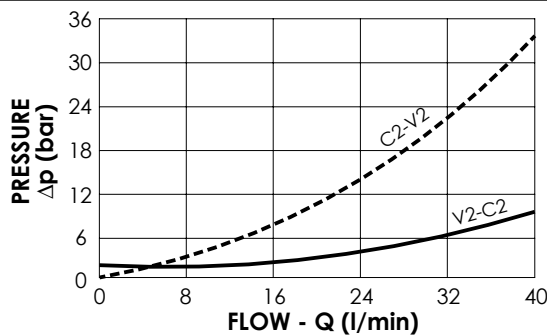
MNDN-040-LLPV

**SOFT STOP
DUAL SETTING
WITH BRAKE RELEASE**



SPECIFICATIONS

Max. operating pressure:	300 bar
Rated flow:	40 l/min
Manifold:	Aluminium
Weight:	2,77 kg



NOTES

Setting: at least 1.3 times the load induced pressure

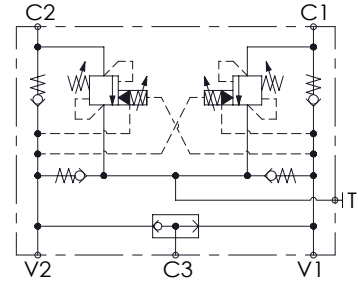
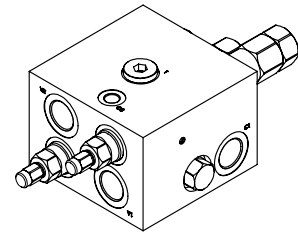
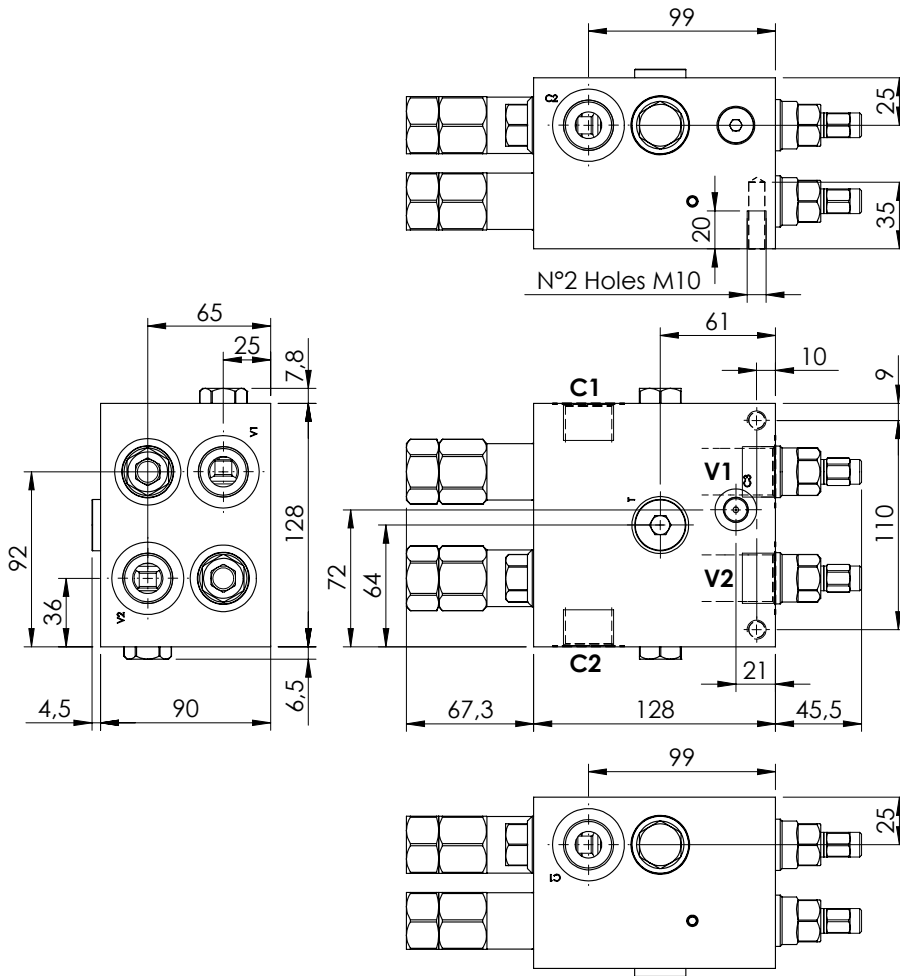
ORDERING CODES

Quick code	Description	Pilot ratio	Main ports size	Standard setting (bar, Q=5 l/min)	Adjust. range (bar)	Pressure increase (bar/turn)
MN000019	MNDN-040-LLPV-09-G38-N300	9:1	V1,V2,C1,C2,T: G 3/8" C3: G 1/4"	Start: 300 Brake: 120	100-300	119
MN000028	MNDN-040-LLPV-09-G38-N200	9:1	V1,V2,C1,C2,T: G 3/8" C3: G 1/4"	Start: 200 Brake: 90	60-210	63

MOTION CONTROL

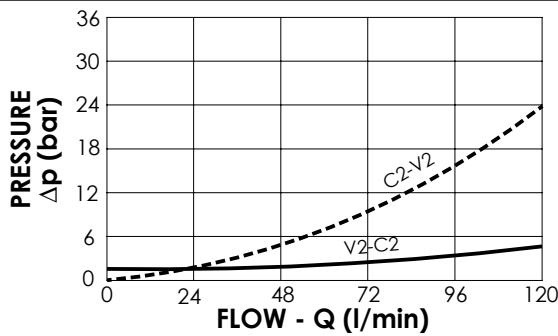
MNDN-120-LLPV

**SOFT STOP
DUAL SETTING
WITH BRAKE RELEASE**



SPECIFICATIONS

Max. operating pressure:	300 bar
Rated flow:	120 l/min
Manifold:	Aluminium
Weight:	5,11 kg



NOTES

Setting: at least 1.3 times the load induced pressure

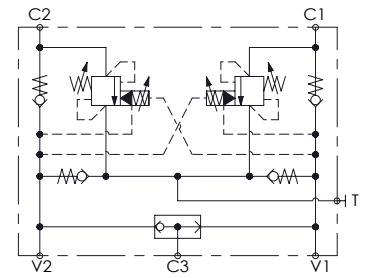
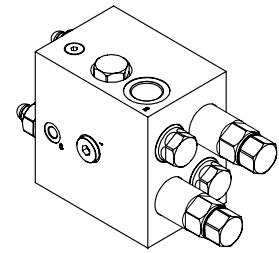
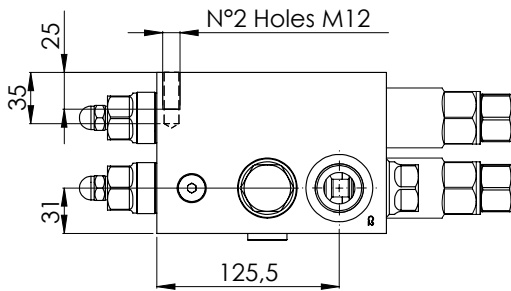
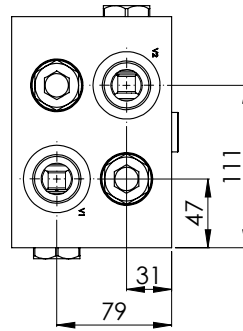
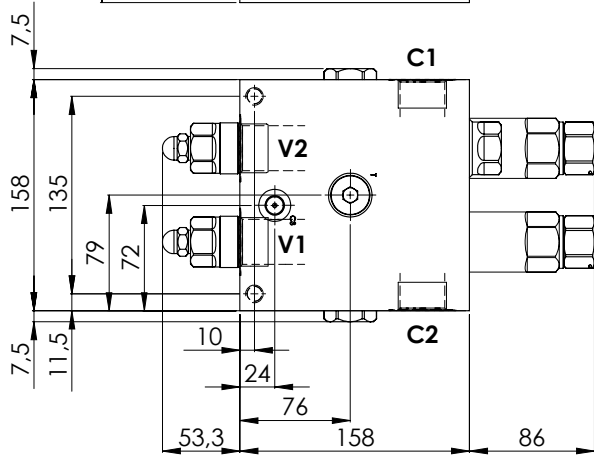
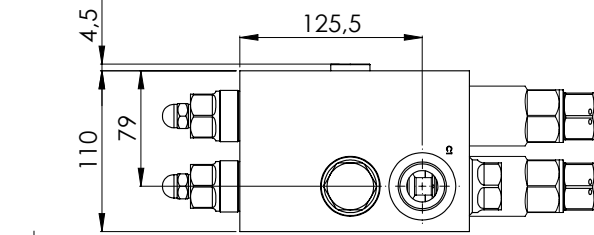
ORDERING CODES

Quick code	Description	Pilot ratio	Main ports size	Standard setting (bar, Q=5 l/min)	Adjust. range (bar)	Pressure increase (bar/turn)
MN000010	MNDN-120-LLPV-08-G34-N300	8:1	V1,V2,C1,C2: G 3/4" T: G 1/2"; C3: G 1/4"	Start: 300 Brake: 120	100-300	111
MN000001	MNDN-120-LLPV-08-G34-N200	8:1	V1,V2,C1,C2: G 3/4" T: G 1/2"; C3: G 1/4"	Start: 180 Brake: 90	70-210	73
MN000018	MNDN-120-LLPV-03-G34-N300	3:1	V1,V2,C1,C2: G 3/4" T: G 1/2"; C3: G 1/4"	Start: 300 Brake: 120	100-300	111
MN000048	MNDN-120-LLPV-03-G34-N200	3:1	V1,V2,C1,C2: G 3/4" T: G 1/2"; C3: G 1/4"	Start: 180 Brake: 90	70-210	73

MOTION CONTROL

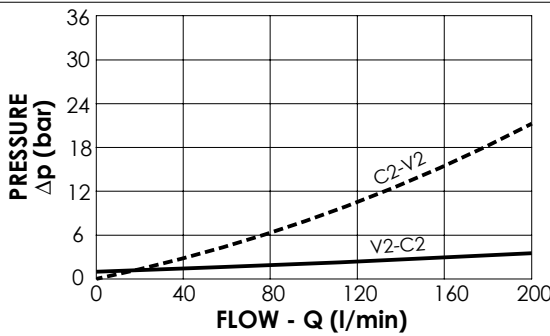
MNDN-200-LLPV

SOFT STOP
DUAL SETTING
WITH BRAKE RELEASE



SPECIFICATIONS

Max. operating pressure:	300 bar
Rated flow:	200 l/min
Manifold:	Aluminium
Weight:	9,81 kg



NOTES

Setting: at least 1.3 times the load induced pressure

ORDERING CODES

Quick code	Description	Pilot ratio	Main ports size	Standard setting (bar, Q=5 l/min)	Adjust. range (bar)	Pressure increase (bar/turn)
MN000022	MNDN-200-LLPV-08-G10-N300	8:1	V1,V2,C1,C2 : G1" T : G1/2"; C3 : G 1/4"	Start: 300 Brake: 120	120-300	65