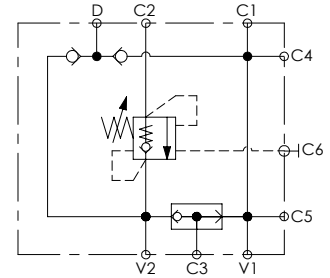
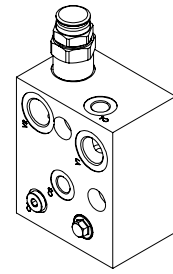
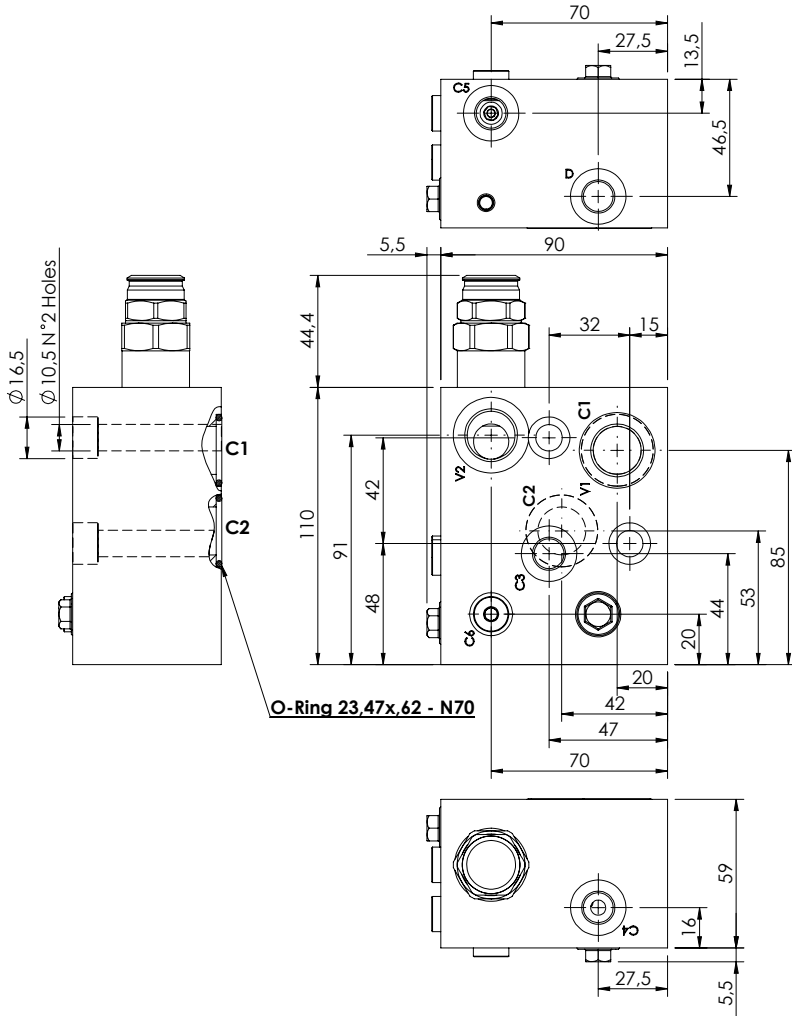


VALVES FOR WINCHES

MBSN-100-ZMSF

**PILOT ASSISTED
OVERCENTRE**

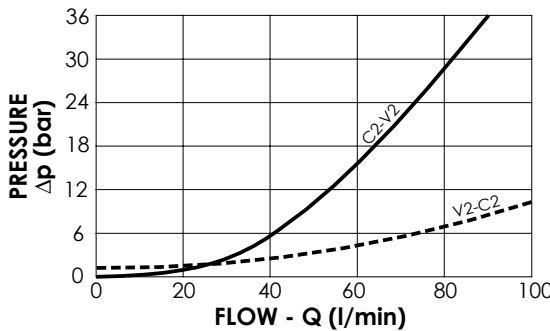


SPECIFICATIONS

Max. operating pressure:	350 bar
Rated flow:	100 l/min
Manifold:	Aluminum
Weight:	1,61 kg

SEALING CAP

Ordering code:
PT000243



NOTES

Setting: at least 1.3 times the load induced pressure

Designed for DANFOSS motors OMS series.

ORDERING CODES

Quick code	Description	Pilot ratio	Main ports size	Standard setting (bar, Q=5 l/min)	Adjust. range (bar)	Pressure increase (bar/turn)
MB000925	MBSN-100-ZMSF-04-G12-N350	4:1	V1, V2: G1/2" C6: G1/8" C1, C2: Ø19 D, C3, C4, C5: G1/4"	250	100-350	124