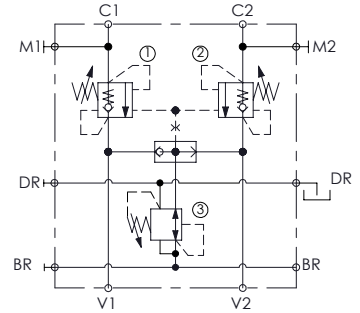
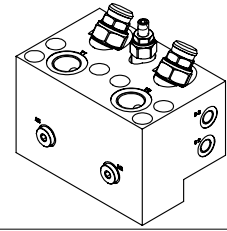
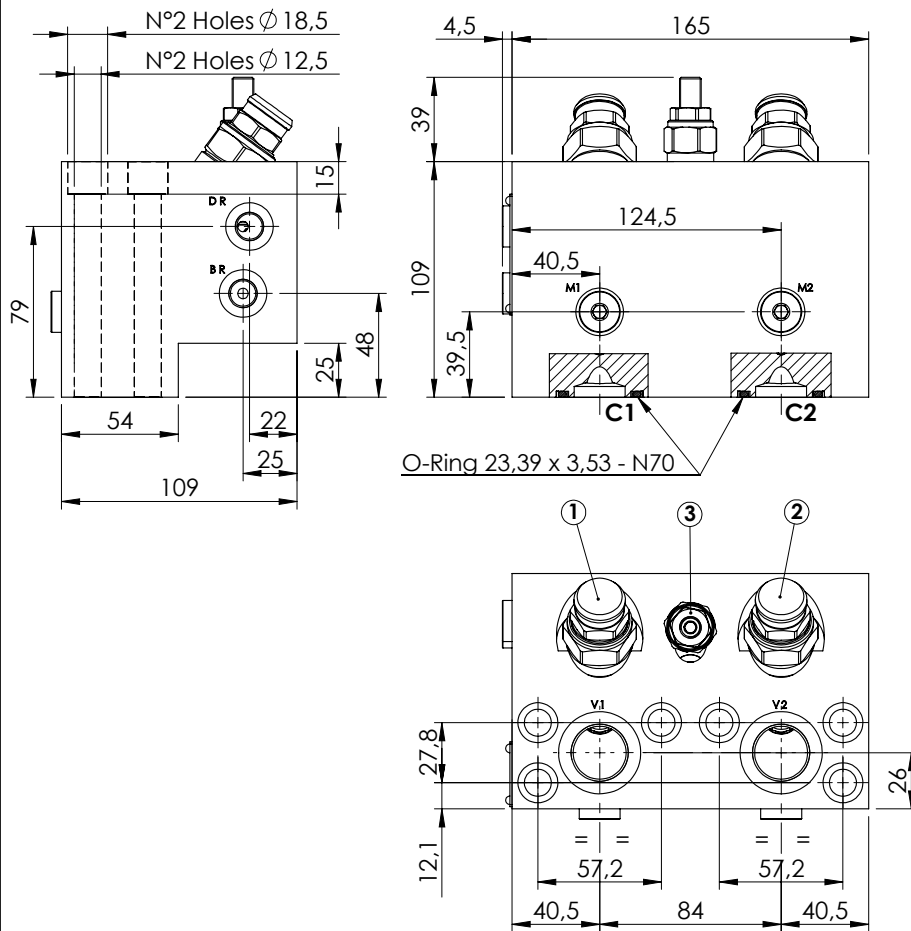


VALVES FOR MOTORS

MBDN-150-AMSR OVERCENTRE WITH BRAKE RELEASE



SPECIFICATIONS

Max. operating pressure:	420 bar
Rated flow:	150 l/min
Manifold:	Steel
Weight:	12,07 kg

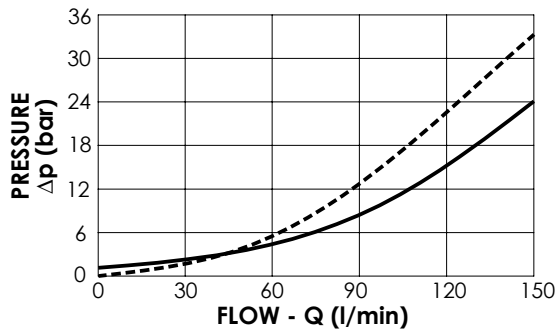
SEALING CAP

Ordering code:
ST000012



NOTES

Setting: at least 1.3 times the load induced pressure
Designed for REXROTH A2FE 80-90 motors



ORDERING CODES

Quick code	Description	Pilot ratio	Main ports size	Standard setting (bar, Q=5 l/min)	Adjust. range (bar)	Pressure increase (bar/turn)
MB000477	MBDN-150-AMSR-04-S10-N420	4:1	V1,V2:G 3/4" C1,C2: 1" SAE 6000 BR,DR:G 1/4"	①②: 350 ③: 40	①②:100-350 ③: 10-60	①②: 104 ③: 6