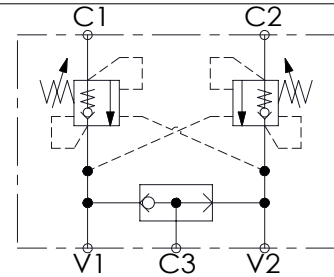
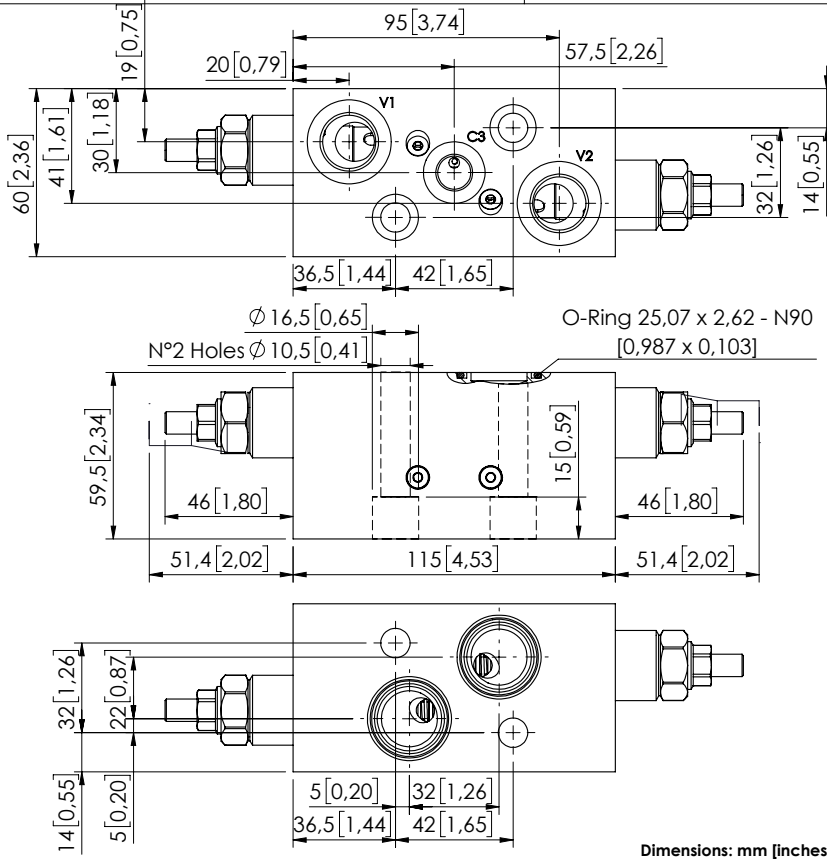


# MBDN-060-ZMSF

DOUBLE ACTING WITH  
BRAKE RELEASE



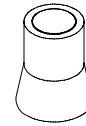
## SPECIFICATIONS

|                                  |                     |
|----------------------------------|---------------------|
| Max. operating pressure:         | 250 bar (3600 psi)  |
| Rated flow:                      | 60 l/min (16 gpm)   |
| Manifold:                        | Aluminium           |
| Weight:                          | 1,232 kg (2,91 lbs) |
| Contamination class to ISO 4406: | See technical spec. |
| MTTFa:                           | 150 years           |

## NOTES

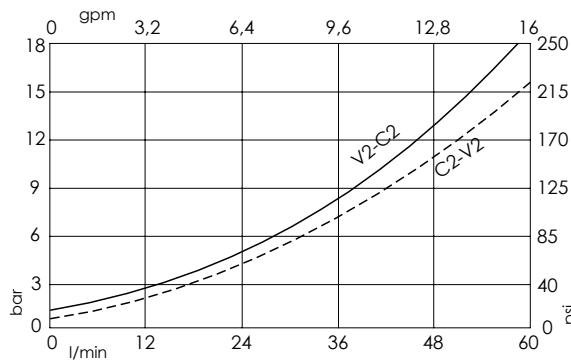
Designed for OMS motors.

## SEALING CAP



Ordering code:  
AT000020

## CURVES



## ORDERING CODES

| Quick code | Description               | Pilot ratio | Main ports size                   | Standard setting<br>Q=5 l/min (1,3 gpm) | Adjustment range               | Pressure increase              |
|------------|---------------------------|-------------|-----------------------------------|---|--------------------------------|--------------------------------|
| MB000908   | MBDN-060-LMSF-11-G12-N250 | 11:1        | V1,V2: G1/2"<br>C1,C2:Ø9 C3:G1/4" | 250 bar<br>(3600 psi)                   | 100-420 bar<br>(1400-6000 psi) | 69 bar/turn<br>(1000 psi/turn) |
|            |                           |             |                                   |   |                                |                                |
|            |                           |             |                                   |   |                                |                                |
|            |                           |             |                                   |   |                                |                                |
|            |                           |             |                                   |   |                                |                                |