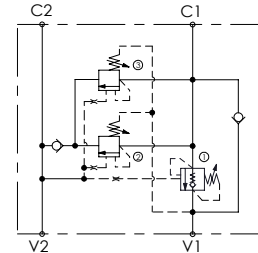
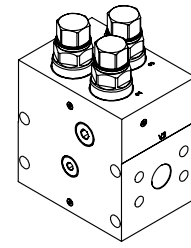
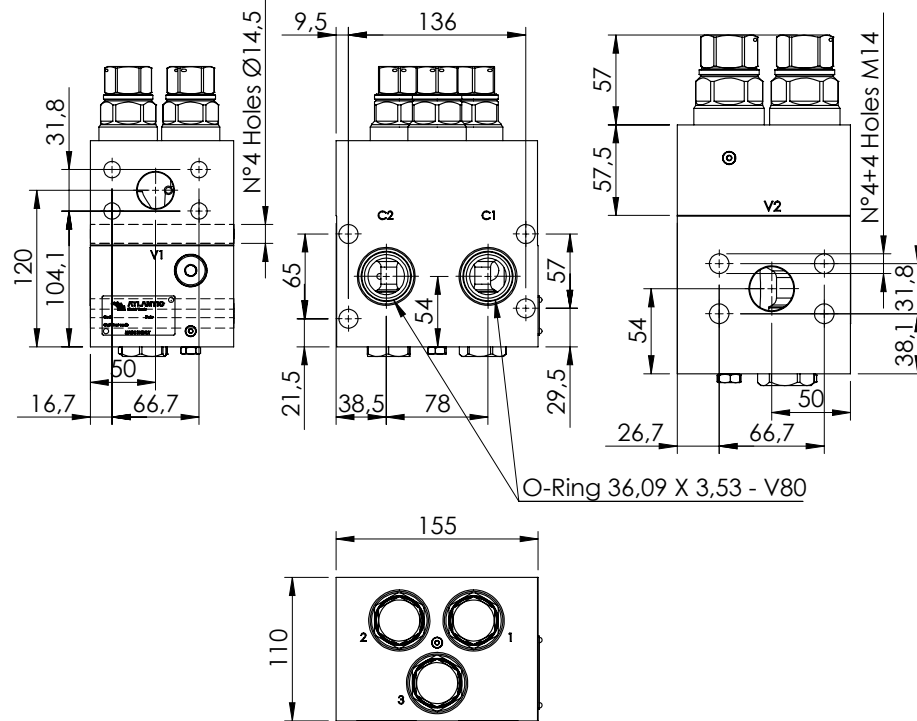


REGENERATIVE VALVE

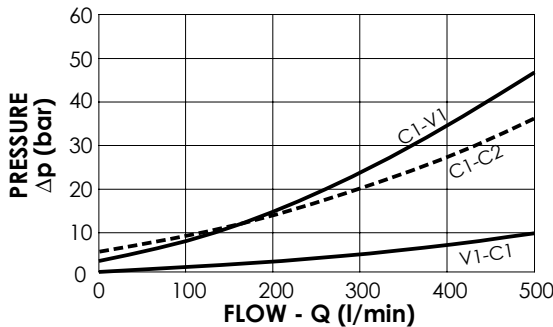
**MRSN-300-ABNE**

REGENERATIVE



**SPECIFICATIONS**

Max. operating pressure:	420 bar
Rated flow:	300 l/min
Manifold:	Steel
Weight:	18,82 kg



**NOTES**

Designed for crusher scissors  
Valve for heavy duty working cycles with viton seals and reinforced plugs

**ORDERING CODES**

Quick code	Description	Pilot ratio	Main ports size	Standard setting (bar, Q=5 l/min)	Adjust. range (bar)	Pressure increase (bar/turn)
MB000132	MRSN-300-ABNE-06-S11-V420	6:1	V1,V2: 1-1/4 SAE 6000 C1,C2: Ø 28	250	120-360	104