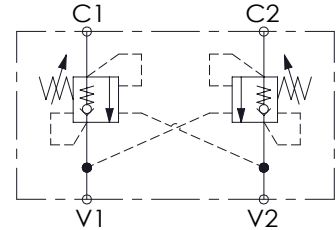
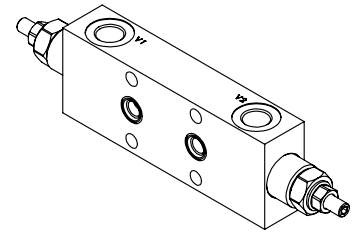
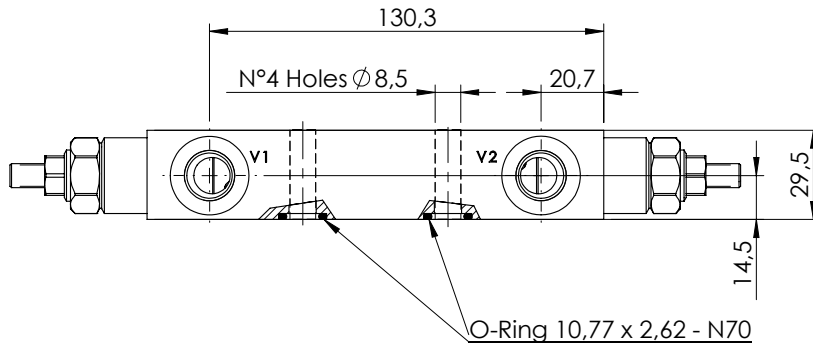
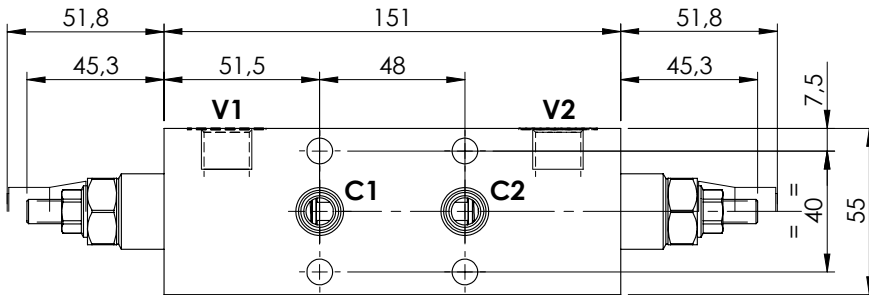


OVERCENTRE VALVE

MBDN-060-ABNR

DOUBLE ACTING
TWO FLANGED PORTS

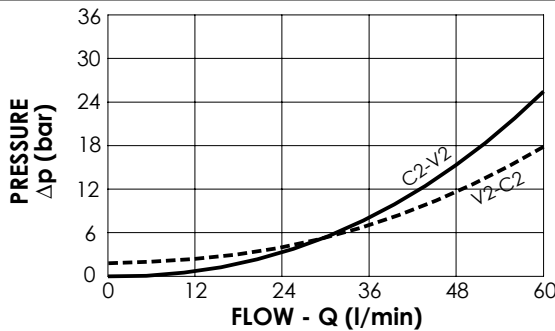
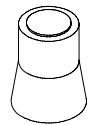


SPECIFICATIONS

| | |
|--------------------------|----------|
| Max. operating pressure: | 350 bar |
| Rated flow: | 60 l/min |
| Manifold: | Steel |
| Weight: | 1,89 kg |

SEALING CAP

Ordering code:
AT000020



NOTES

Setting: at least 1.3 times the load induced pressure

ORDERING CODES

| Quick code | Description | Pilot ratio | Main ports size | Standard setting (bar, Q=5 l/min) | Adjust. range (bar) | Pressure increase (bar/turn) |
|------------|---------------------------|-------------|------------------------------|-----------------------------------|---------------------|------------------------------|
| MB000235 | MBDN-060-ABNR-11-G38-N250 | 11:1 | V1, V2: G3/8" C1, C2: Ø 9 | 200 | 60-250 | 69 |
| MB000087 | MBDN-060-ABNR-04-G38-N350 | 4,2:1 | V1, V2: G3/8" C1, C2: Ø 9 | 350 | 100-350 | 138 |
| MB000178 | MBDN-060-ABNR-04-G38-N200 | 4,2:1 | V1, V2: G3/8" C1, C2: Ø 9 | 200 | 60-210 | 62 |
| MB000826 | MBDN-060-ABNR-07-G38-N350 | 7:1 | V1, V2: G3/8" C1, C2: Ø 9 | 350 | 100-350 | 106 |
| | | | | | | |
| | | | | | | |