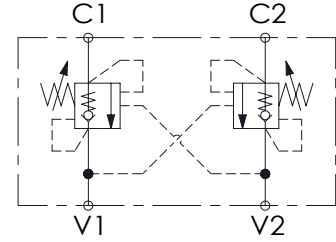
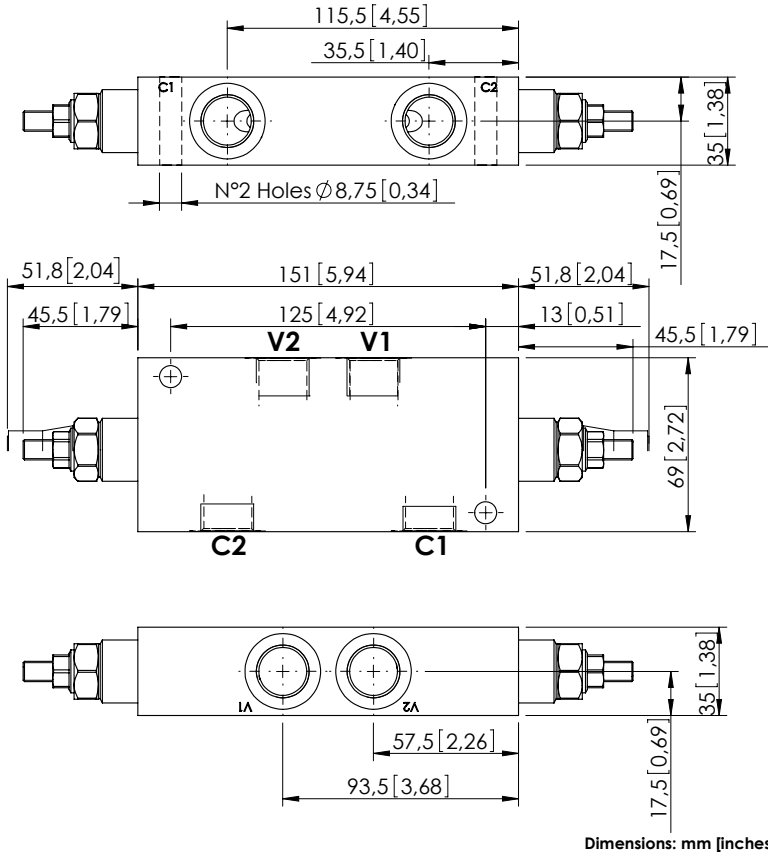


OVERCENTRE VALVE

MBDN-060-ZLDE

DOUBLE ACTING



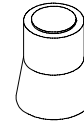
SPECIFICATIONS

| | |
|----------------------------------|--|
| Max. operating pressure: | 350 bar (5000 psi) |
| Rated flow: | 60 l/min (16 gpm) |
| Weight: | Aluminium: 1,1 kg (2,43 lbs) Steel: 2,7 kg (2,95 lbs) |
| Contamination class to ISO 4406: | See technical spec. |
| MITFd: | 150 years |

NOTES

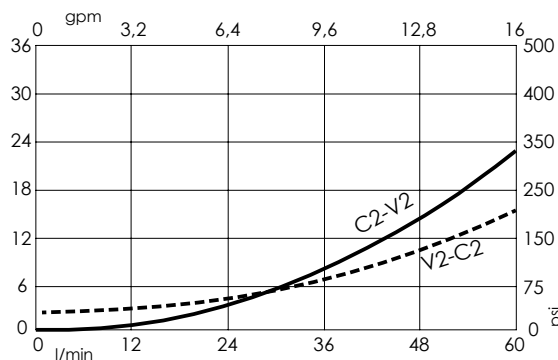
Setting: at least 1.3 times the load induced pressure.

SEALING CAP



Ordering code:
AT000020

CURVES



ORDERING CODES

| Quick code | Description | Pilot ratio | Manifold material | Main ports size | Standard setting Q=5 l/min (1,3 gpm) | Adjustment range | Pressure increase |
|------------|---------------------------|-------------|-------------------|--------------------------------|---|-----------------------------|------------------------------|
| MB000321 | MBDN-060-ZLDE-04-G12-N350 | 4.2:1 | Aluminium | V1, V2: G1/2" C1, C2: G1/2" | 350 bar (5000 psi) | 100-350 bar (1400-5000 psi) | 138 bar/turn (2000 psi/turn) |
| MB000443 | MBDN-060-ZLDE-04-G12-N200 | 4.2:1 | Aluminium | V1, V2: G1/2" C1, C2: G1/2" | 200 bar (2900 psi) | 60-210 bar (850-3000 psi) | 62 bar/turn (900 psi/turn) |
| MB000444 | MBDN-060-ALDE-04-G12-N350 | 4.2:1 | Steel | V1, V2: G1/2" C1, C2: G1/2" | 350 bar (5000 psi) | 100-350 bar (1400-5000 psi) | 138 bar/turn (2000 psi/turn) |
| MB000445 | MBDN-060-ALDE-04-G12-N200 | 4.2:1 | Steel | V1, V2: G1/2" C1, C2: G1/2" | 200 bar (2900 psi) | 60-210 bar (850-3000 psi) | 62 bar/turn (900 psi/turn) |
| MB000320 | MBDN-060-ZLDE-07-G12-N350 | 7:1 | Aluminium | V1, V2: G1/2" C1, C2: G1/2" | 350 bar (5000 psi) | 100-350 bar (1400-5000 psi) | 106 bar/turn (1500 psi/turn) |
| MB000446 | MBDN-060-ZLDE-07-G12-N200 | 7:1 | Aluminium | V1, V2: G1/2" C1, C2: G1/2" | 200 bar (2900 psi) | 60-210 bar (850-3000 psi) | 46 bar/turn (650 psi/turn) |
| MB000447 | MBDN-060-ALDE-07-G12-N350 | 7:1 | Steel | V1, V2: G1/2" C1, C2: G1/2" | 350 bar (5000 psi) | 100-350 bar (1400-5000 psi) | 106 bar/turn (1500 psi/turn) |
| MB000448 | MBDN-060-ALDE-07-G12-N200 | 7:1 | Steel | V1, V2: G1/2" C1, C2: G1/2" | 200 bar (2900 psi) | 60-210 bar (850-3000 psi) | 46 bar/turn (650 psi/turn) |