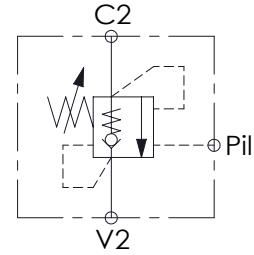
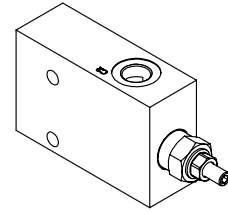
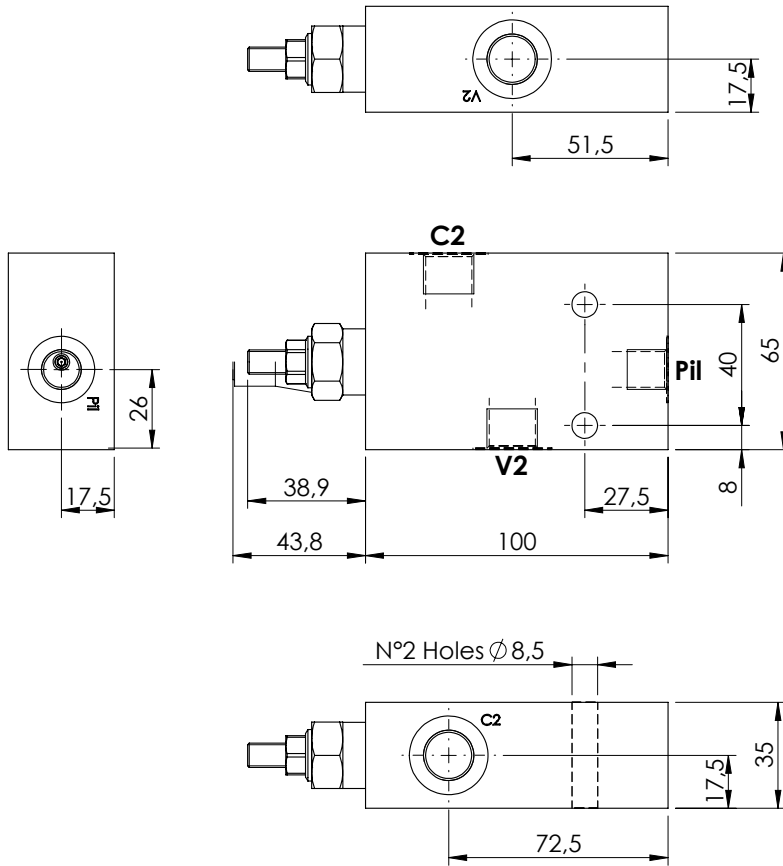


OVERCENTRE VALVE

**MBSN-040-ZLNA**

**SINGLE ACTING  
IN LINE PORTS**

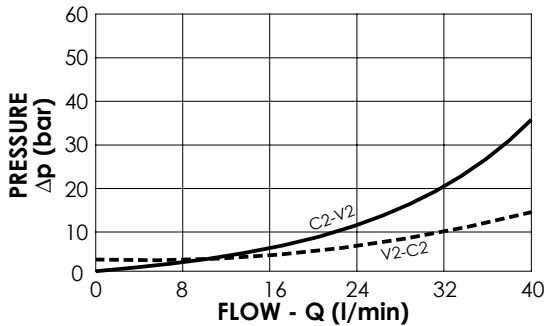
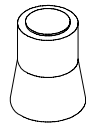


**SPECIFICATIONS**

Max. operating pressure:	350 bar
Rated flow:	40 l/min
Manifold:	Aluminium
Weight:	0,64 kg

**SEALING CAP**

Ordering code:  
**AT000020**



**NOTES**

Setting: at least 1.3 times the load induced pressure

**ORDERING CODES**

Quick code	Description	Pilot ratio	Main ports size	Standard setting (bar, Q=5 l/min)	Adjust. range (bar)	Pressure increase (bar/turn)
MB000564	MBSN-040-ZLNA-04-G38-N350	4,1:1	C2,V2: G 3/8" Pil: G 1/4"	350	100-350	184
MB000565	MBSN-040-ZLNA-04-G38-N200	4,1:1	C2,V2: G 3/8" Pil: G 1/4"	200	60-210	83
MB000566	MBSN-040-ZLNA-07-G38-N350	7,5:1	C2,V2: G 3/8" Pil: G 1/4"	350	100-350	138
MB000567	MBSN-040-ZLNA-07-G38-N200	7,5:1	C2,V2: G 3/8" Pil: G 1/4"	200	60-210	83