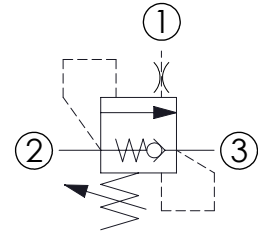
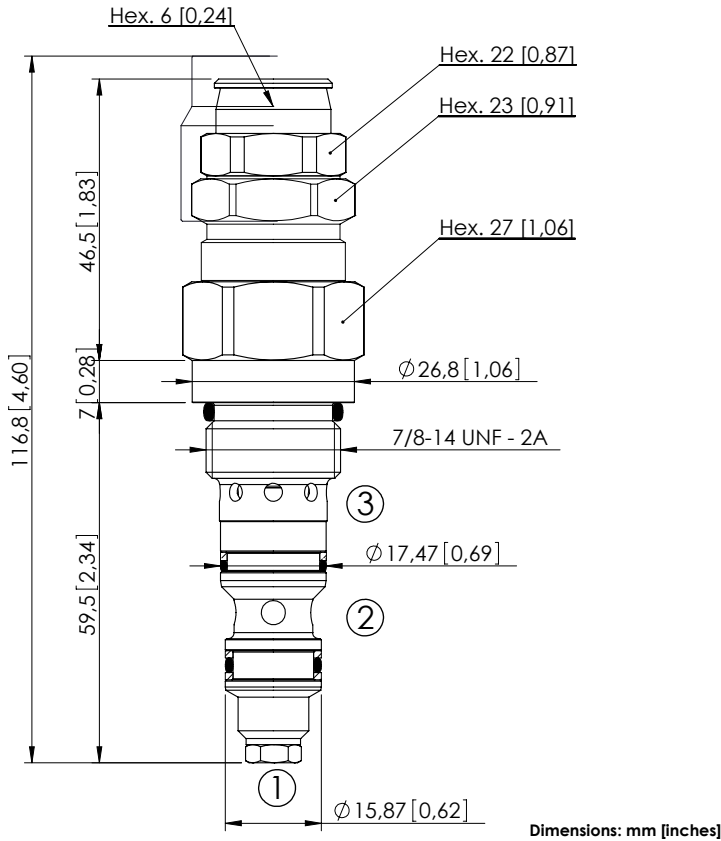


OVERCENTRE VALVE

CBSN-040-DCNH

DIFFERENTIAL AREA



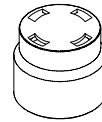
SPECIFICATIONS

Max. operating pressure:	350 bar (5000 psi)
Rated flow:	40 l/min (11 gpm)
Cavity:	VP000174
Weight:	0,26 kg (0,57 lbs)
Installation torque:	65 - 85 Nm (48 - 63 ft-lb)
Seal kit:	RD700174
Contamination class to ISO 4406:	See technical spec.
MTFd:	150 years

NOTES

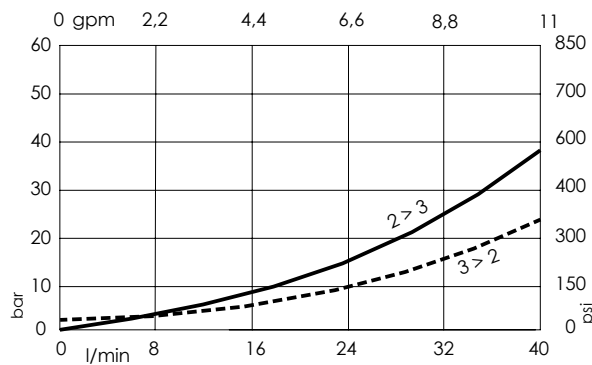
Setting: at least 1.3 times the load induced pressure.

SEALING CAP



Ordering code:
PT000258

CURVES



ORDERING CODES

Quick code	Description	Pilot ratio	Standard setting Q=5 l/min (1,3 gpm)	Adjustment range	Pressure increase
CB000016	CBSN-040-DCNH-04-174-N350	4,1:1	350 bar (5000 psi)	100-350 bar (1400-5000 psi)	145 bar/turn (2100 psi/turn)