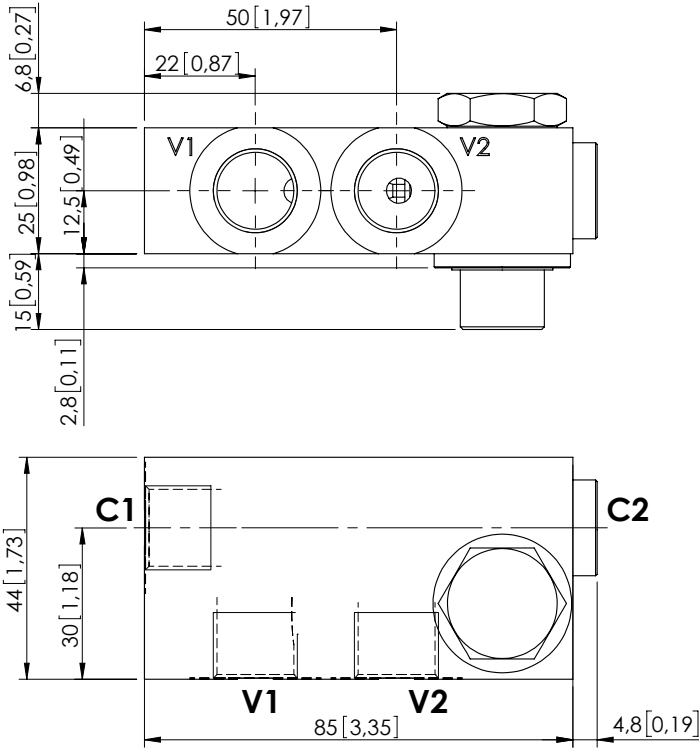


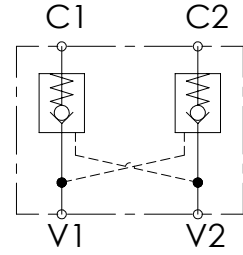
PILOT OPERATED CHECK VALVE

MCDN-020-SLGS

DOUBLE ACTING
WITH BANJO



Dimensions: mm [inches]

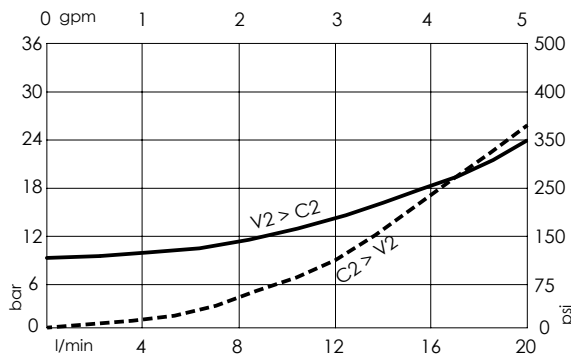


SPECIFICATIONS

Max. operating pressure:	350 bar (5000 psi)
Rated flow:	20 l/min (5 gpm)
Manifold:	Steel
Weight:	0,68 kg (1,5 lbs)
Contamination class to ISO 4406:	See technical spec.
MTF _a :	150 years

NOTES

CURVES



ORDERING CODES

Quick code	Description	Main ports size	Pilot ratio	Cracking pressure	O-ring on pilot piston
MC000208	MCDN-020-SPGS-04-G38-N010	V1,V2,C1,C2 : G 3/8"	4:1	10 bar (150 psi)	NO