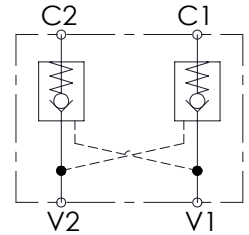
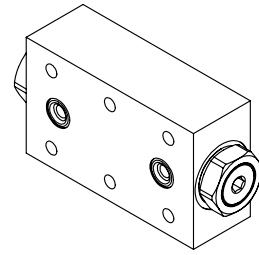
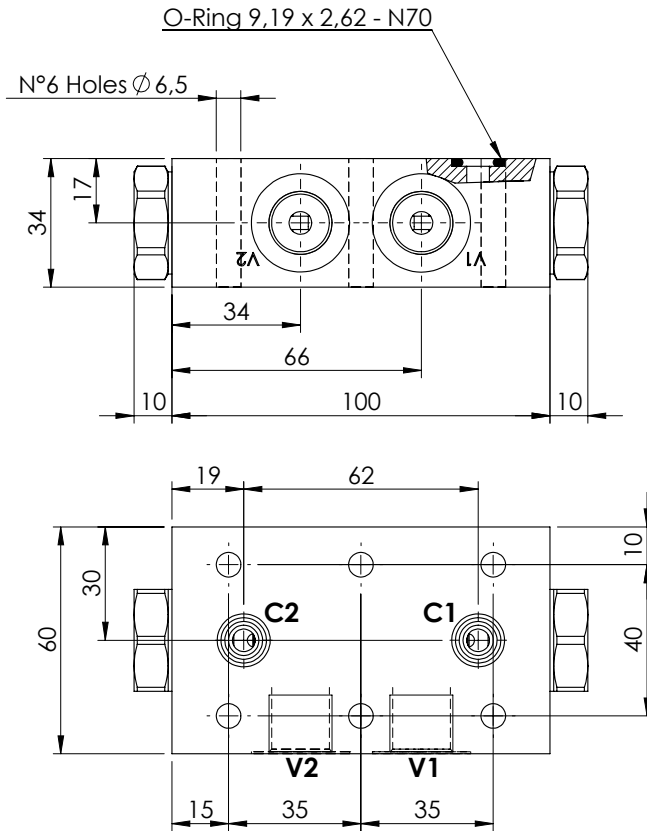


PILOT OPERATED CHECK VALVE

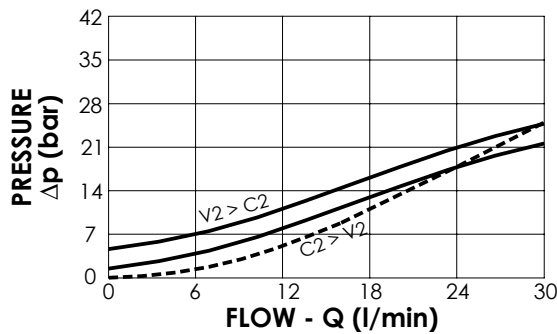
**MCDN-030-SBNS**

DOUBLE ACTING  
TWO FLANGED PORTS



**SPECIFICATIONS**

Max. operating pressure:	350 bar
Rated flow:	30 l/min
Manifold:	Steel
Weight:	1,49 kg



**ORDERING CODES**

Quick code	Description	Main ports size	Pilot ratio	Cracking pressure (bar)	O-Ring on pilot piston
MC000036	MCDN-030-SBNS-07-G38-N005	V1,V2:G 3/8" C1,C2:Ø 6	7:1	5	NO
MC000037	MCDN-030-SBNC-07-G38-N005	V1,V2:G 3/8" C1,C2:Ø 6	7:1	5	YES
MC000038	MCDN-030-SBNS-07-G38-N001	V1,V2:G 3/8" C1,C2:Ø 6	7:1	1	NO