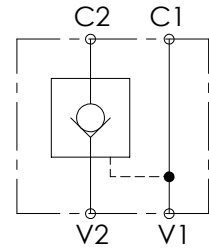
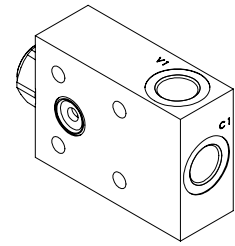
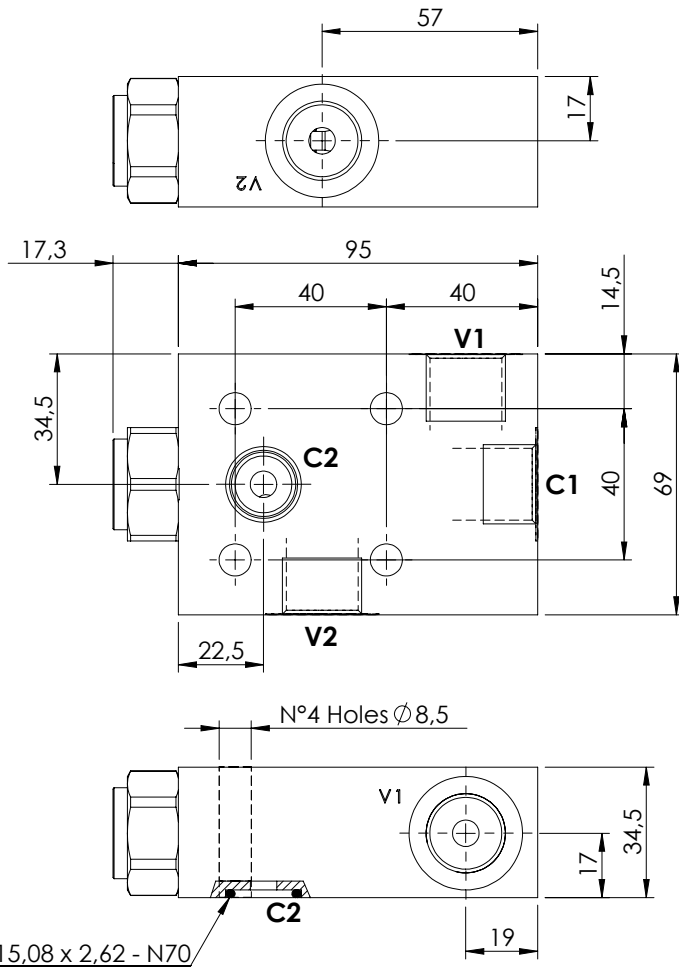


PILOT OPERATED CHECK VALVE

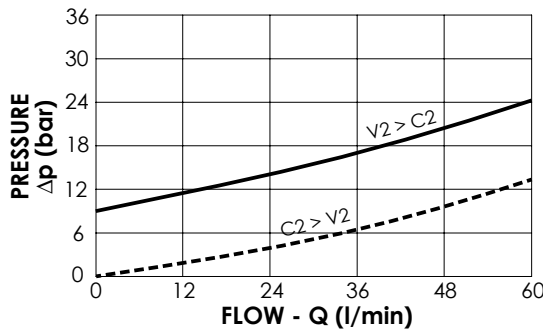
**MCSN-060-TANS**

SINGLE ACTING  
ONE FLANGED PORT



**SPECIFICATIONS**

Max. operating pressure:	350 bar
Rated flow:	60 l/min
Manifold:	Aluminium
Weight:	0,66 kg



**ORDERING CODES**

Quick code	Description	Main ports size	Pilot ratio	Cracking pressure (bar)	O-Ring on pilot piston
MC000080	MCSN-060-TANS-03-G12-N008	V1,V2,C1: G 1/2" C2: Ø 7	3:1	8	NO
MC000077	MCSN-060-TANC-03-G12-N008	V1,V2,C1: G 1/2" C2: Ø 7	3:1	8	YES