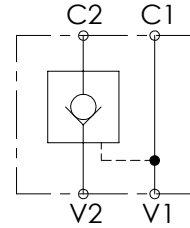
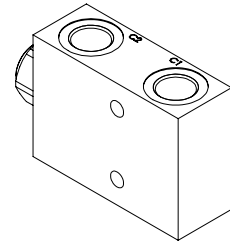
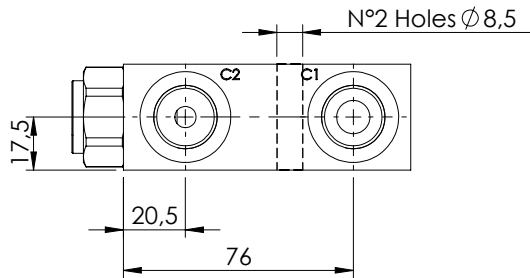
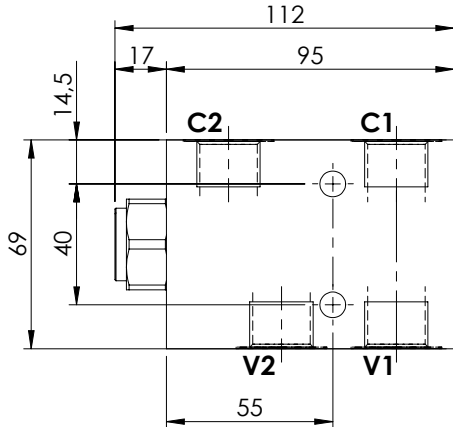
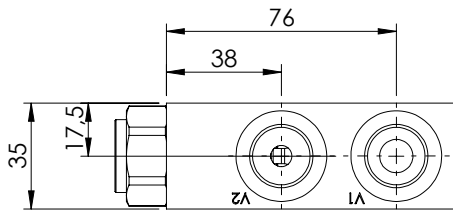


PILOT OPERATED CHECK VALVE

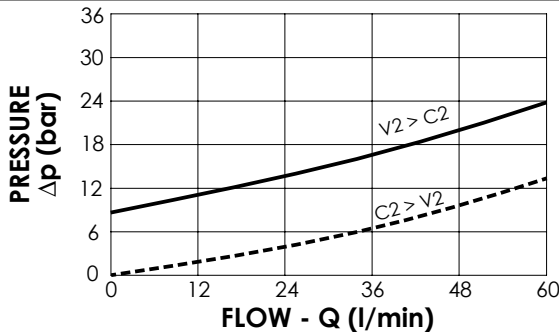
**MCSN-060-TLNS**

**SINGLE ACTING**



**SPECIFICATIONS**

Max. operating pressure:	350 bar
Rated flow:	60 l/min
Manifold:	Aluminium
Weight:	0,66 kg



**ORDERING CODES**

Quick code	Description	Main ports size	Pilot ratio	Cracking pressure (bar)	O-Ring on pilot piston
MC000079	MCSN-060-TLNS-03-G12-N008	V1,V2,C1,C2 : G 1/2"	3:1	8	NO
MC000076	MCSN-060-TLNC-03-G12-N008	V1,V2,C1,C2 : G 1/2"	3:1	8	YES