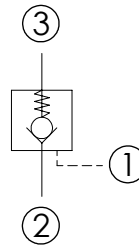
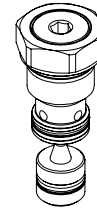
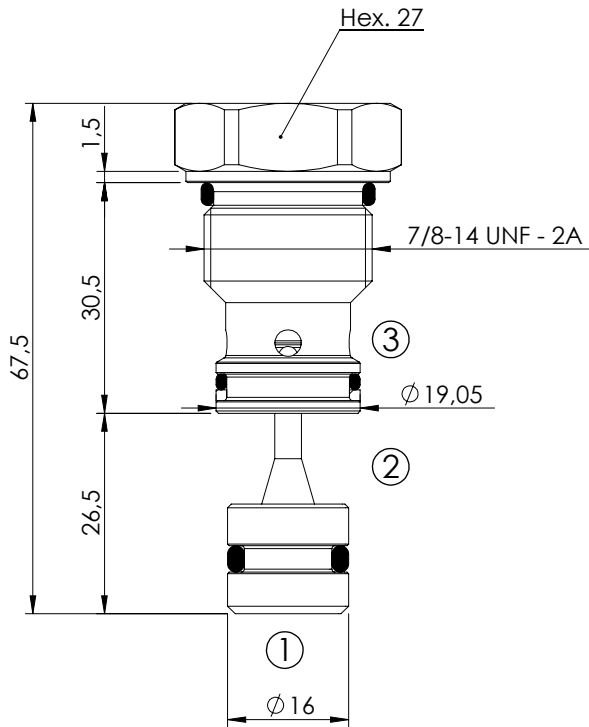


PILOT OPERATED CHECK VALVE

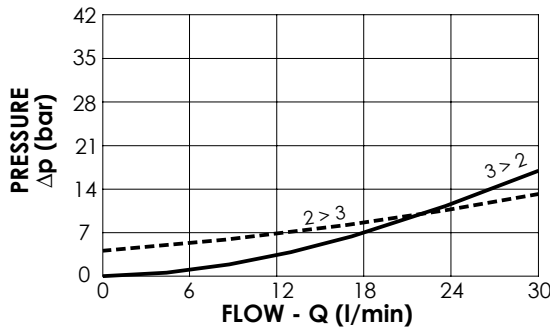
CDPN-030-PSNE

SEPARATE PILOT
PISTON



SPECIFICATIONS

Max. operating pressure:	350 bar
Rated flow:	30 l/min
Cavity:	VP000028
Weight:	0,13 kg
Pilot ratio:	7:1



NOTES

Installation torque: 80 - 90 Nm

ORDERING CODES

Quick code	Description	Cracking pressure (bar)	O-Ring on pilot piston
SC000002	CDPN-030-PSNE-07-028-N005	4,5	YES
SC000044	CDPN-030-PSNN-07-028-N005	4,5	NO