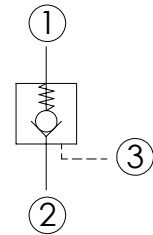
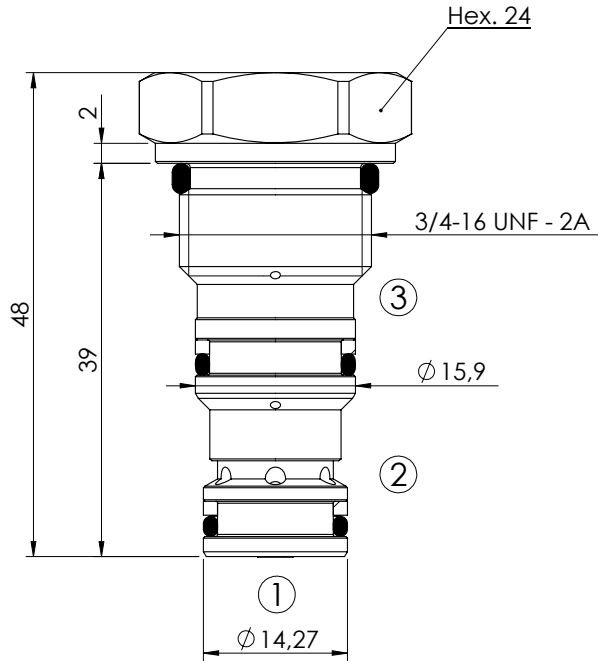
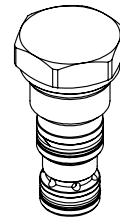


PILOTED CHECK VALVE

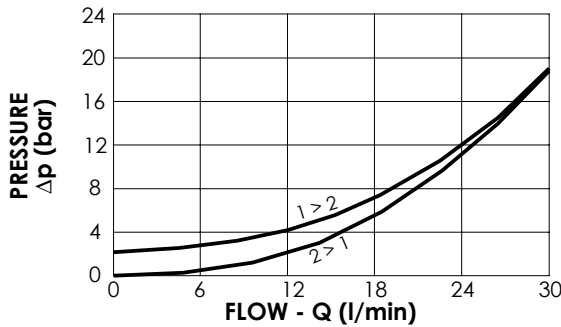
**CDPN-030-PSGR**

**INTEGRAL PILOT  
PISTON**



**SPECIFICATIONS**

Max. operating pressure:	350 bar
Rated flow:	30 l/min
Cavity:	SAE-08-3C
Weight:	0,09 kg
Pilot ratio:	3:1
<b>NOTES</b>	
Installation torque:	40 - 45 Nm
Seal kit:	RA700086



**ORDERING CODES**

Quick code	Description	Cracking pressure (bar)	O-Ring on pilot piston
CD000027	CDPN-030-PSGR-03-S08-N002	2	YES
CD000061	CDPN-030-PSGM-03-S08-N002	2	NO