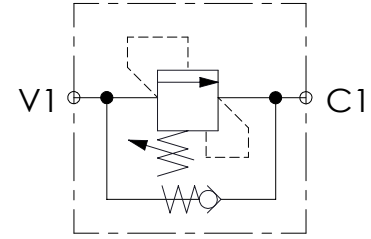
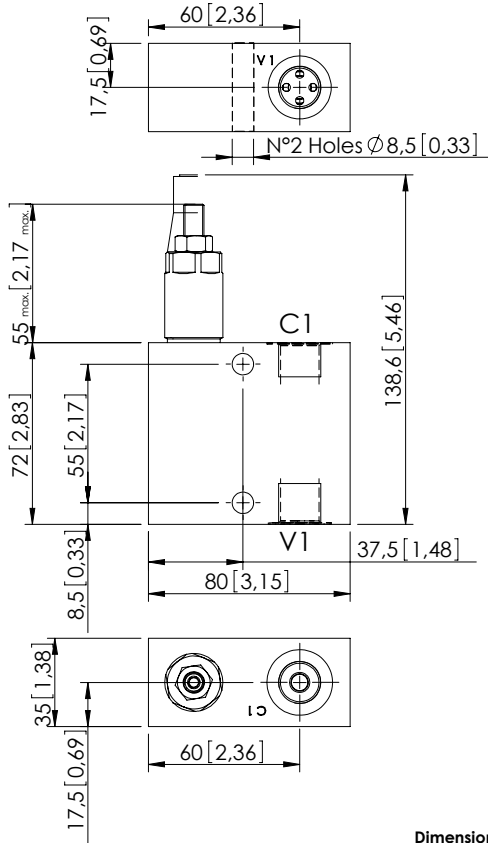


KPSN-030-DPNA

DIRECT ACTING
STABILIZED PISTON
NOT COMPENSATED

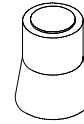


SPECIFICATIONS

Max. operating pressure:	350 bar (5000 psi)
Rated flow:	30 l/min (8 gpm)
Manifold:	Aluminium
Weight:	0,65 kg (1,43 lbs)
Contamination class to ISO 4406:	See technical spec.
MTTFa:	150 years

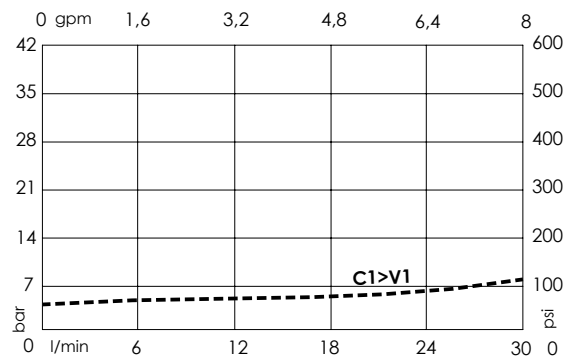
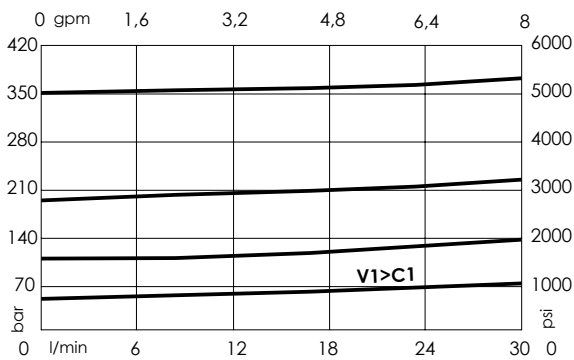
NOTES

SEALING CAP



Ordering code:
AT000020

CURVES



ORDERING CODES

Quick code	Description	Main ports size	Standard setting Q=5 l/min (1,3 gpm)	Adjustment range	Pressure increase
KP000036	KPSN-030-DPNA-HN-G38-N350	C1, V1: G 3/8"	350 bar (5000 psi)	100-350 bar (1400-5000 psi)	91 bar/turn (1300 psi/turn)
KP000033	KPSN-030-DPNA-HN-G38-N200	C1, V1: G 3/8"	200 bar (2900 psi)	50-210 bar (700-3000 psi)	42 bar/turn (600 psi/turn)
KP000035	KPSN-030-DPNA-HN-G38-N100	C1, V1: G 3/8"	100 bar (1400 psi)	30-100 bar (450-1400 psi)	20 bar/turn (300 psi/turn)
KP000034	KPSN-030-DPNA-HN-G38-N050	C1, V1: G 3/8"	50 bar (700 psi)	10-50 bar (150-700 psi)	10 bar/turn (150 psi/turn)