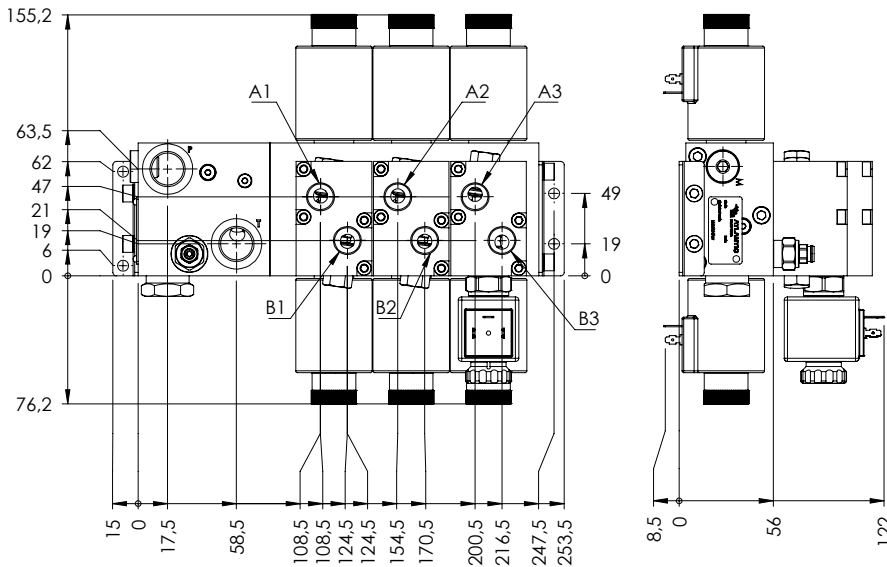
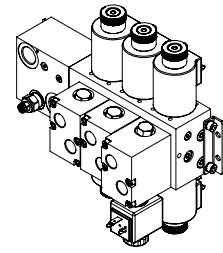


SALT SPRAYER VALVE

EBLE-040-CCSM

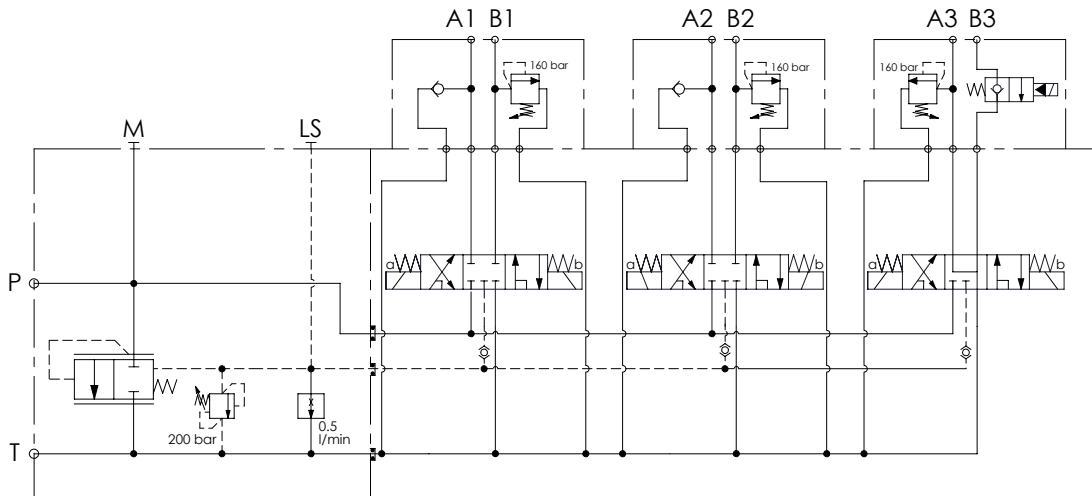


SPECIFICATIONS

Max. operating pressure:	210 bar
Rated flow:	40 l/min
Manifold:	Cast-iron
Weight:	11,8 kg

NOTES

For more informations see the chapter 19.00.000



ORDERING CODES

Quick code	Description	Main ports size:	General relief setting: (bar)	Voltage: (V)	Coil type:
EB000041	EBLE-040-CCSM-MX-G12-BHRN	A,B: G3/8" P,T: G1/2" M: G1/4"	200	DIN 43650	24