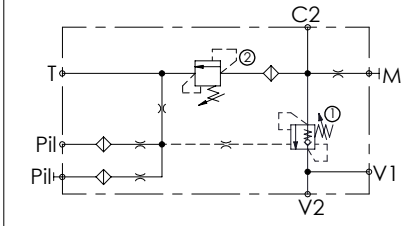
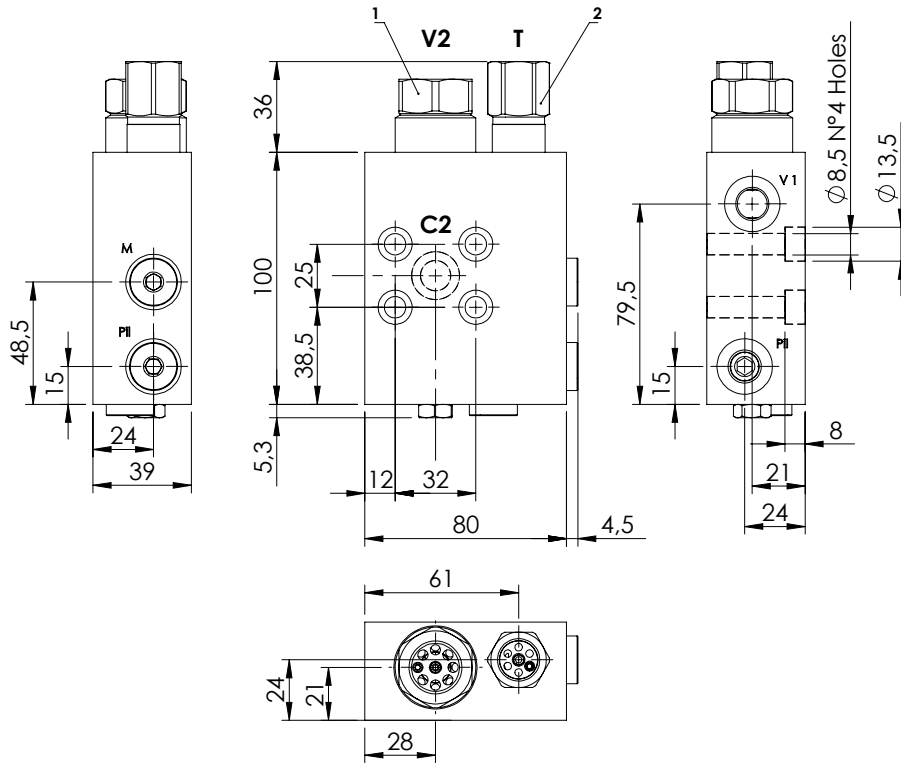
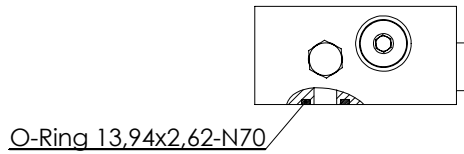
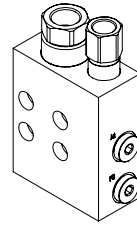


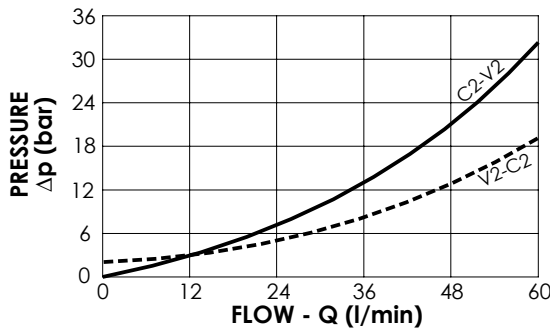
CONCRETE PUMP CRANES

MBSN-060-AASA



SPECIFICATIONS

| | |
|--------------------------|----------|
| Max. operating pressure: | 500 bar |
| Rated flow: | 60 l/min |
| Manifold: | Steel |
| Weight: | 2,38 kg |



NOTES

Setting: at least 1.3 times the load induced pressure

Pilot ratio: 7:1
Operated pilot ratio: 2.5:1

ORDERING CODES

| Quick code | Description | Main ports size | Standard setting (bar, Q=5 l/min) | Adjust. range (bar) | Pressure increase (bar/turn) |
|------------|---------------------------|---|-----------------------------------|------------------------|------------------------------|
| MB000088 | MBSN-060-AASA-02-G12-N500 | V2: G1/2" T:G 3/8" M: G1/8" V1,Pil: G1/4" C2: Ø9 | ①:420 ②:280 | ①:200-450 ②:100-350 | ①:366 ②:102 |
| | | | | | |
| | | | | | |
| | | | | | |
| | | | | | |