

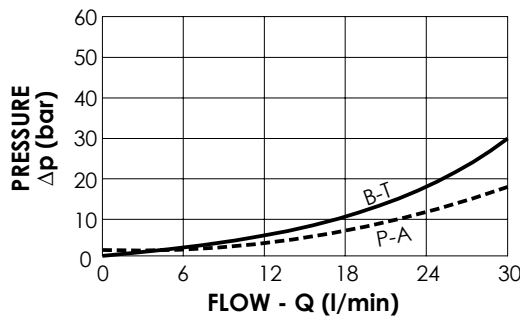
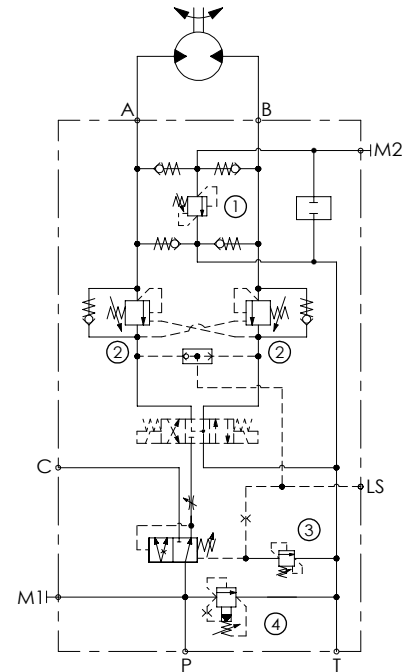
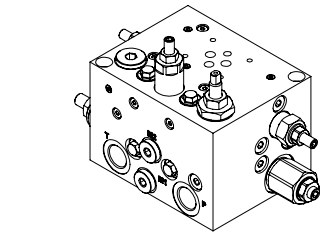
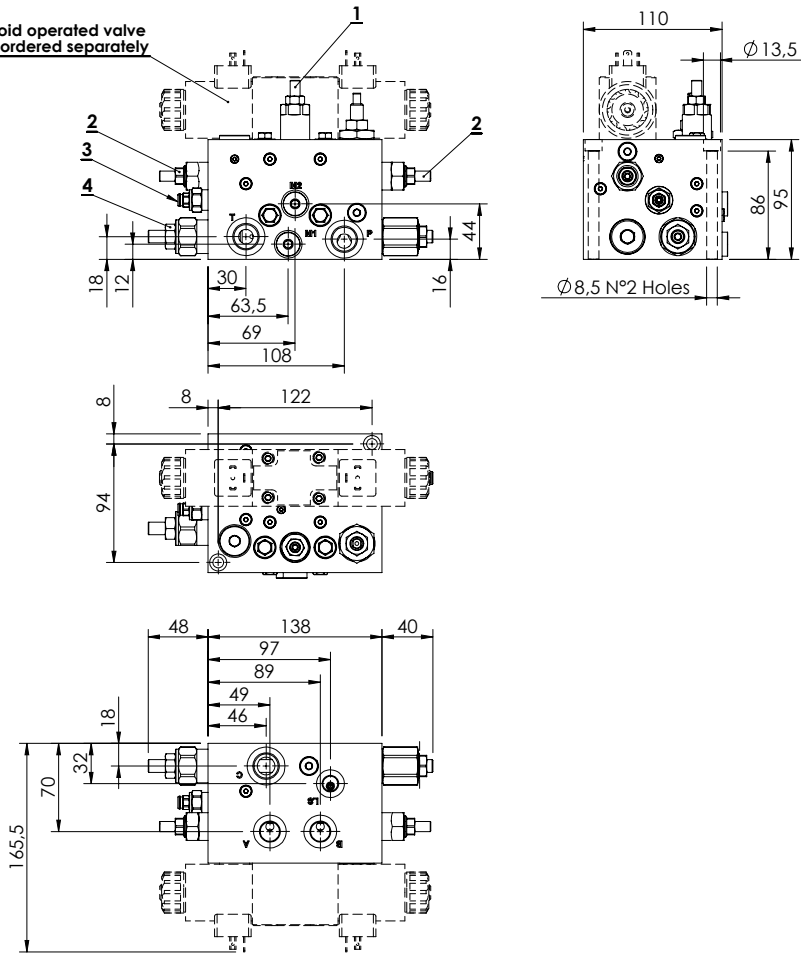
EXCAVATORS VALVE

**BNND-100-ALBE**

EXCAVATOR ATTACHMENT  
FUNCTION - G 1/2"



Solenoid operated valve  
to be ordered separately



**SPECIFICATIONS**

Max. operating pressure:	350 bar
Rated flow:	Q max inlet : 100 l/min Q in A - B : 30 l/min
Manifold:	Steel zincplated
Weight:	10,96 kg

**NOTES**

Our spring on the compensator is adjustable from 5 to 15 bar, the max flow in A and B depend on the Δp curve of the electrical valve.

**ORDERING CODES**

Quick code	Description	Pilot ratio	Main ports size	Standard setting (bar, Q=5 l/min)	Adjust. range (bar)	Pressure increase (bar/turn)
BD000081	Excavator attachment function - G 1/2	4 : 1	P-T-C: G1/2" A-B: G3/8" M1-M2-LS: G1/4"	① 220 ③ 200 ② 260 ④ 250	①② 100-350 ③ 120-350 ④ 140-350	① 91 ③ 165 ② 184 ④ 114