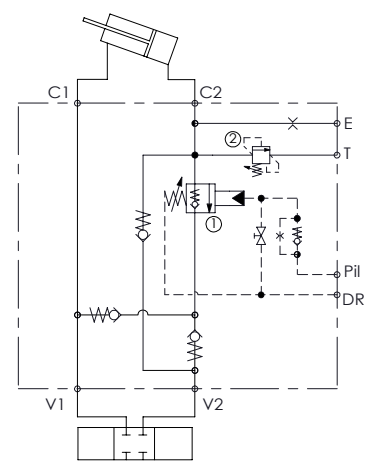
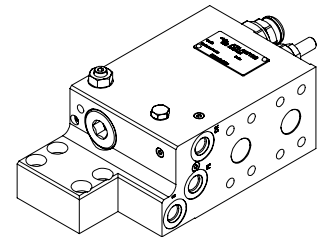
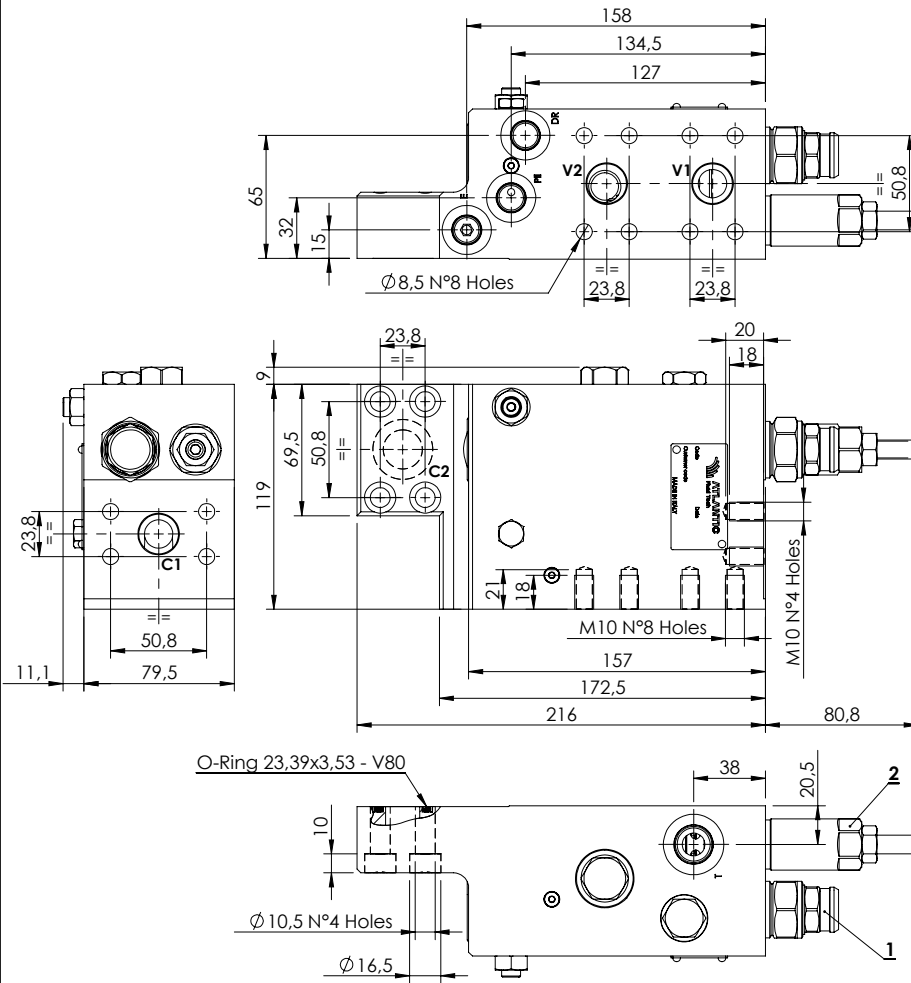


EXCAVATORS VALVE

**MLST-250-RAUR**

**FLANGED TYPE  
3/4" SAE 6000  
WITH OIL RECOVERY**

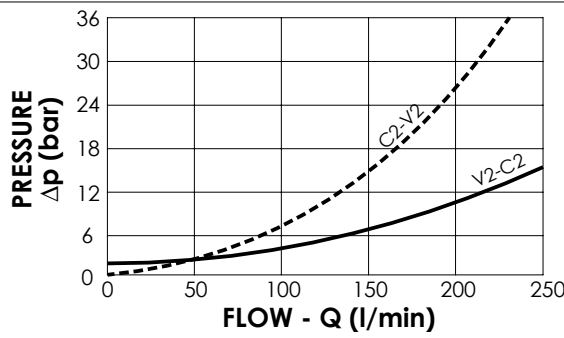


**SPECIFICATIONS**

Max. operating pressure:	420 bar
Rated flow:	250 l/min
Manifold:	Steel
Weight:	11,7 kg

**NOTES**

When correctly adjusted for the special excavator installation, these valves meet the requirement of ISO 8643



**ORDERING CODES**

Quick code	Description	Main ports size	Standard setting (bar)	Adjust. range (bar)	Pressure increase (bar/turn)
ML000265	MLST-250-RAUR-00-S34-N420	V1,V2,C1,C2: 3/4" SAE 6000 E,Pil,Dr: 9/16-18 UNF T: 3/4-16 UNF	① 7.9 Crack. pr. ② 395 Q=5 l/min	① 3-15 ② 150-420	① 6 ② 53