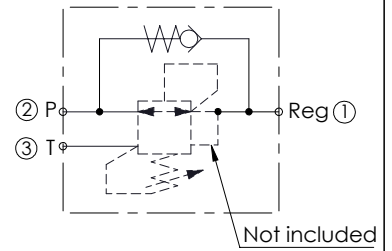
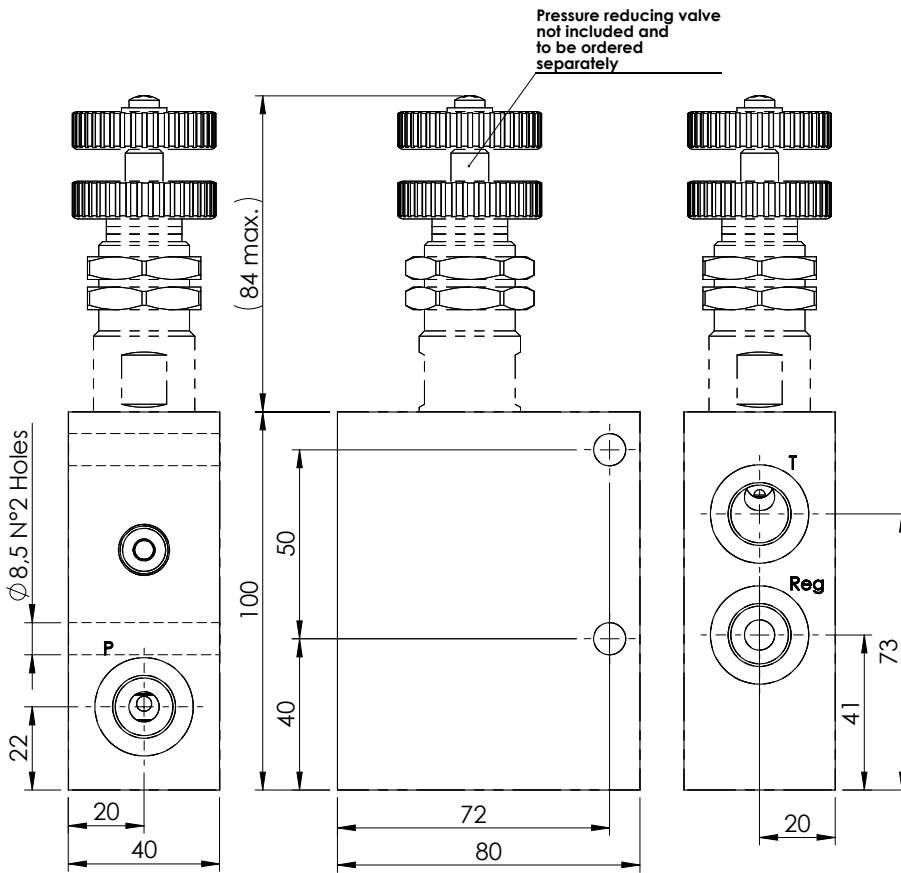
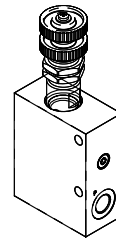


**PRESSURE REDUCING AND RELIEVING IN BODY**

**KPRL-030-DNSR**

**DIRECT ACTING  
WITH CHECK VALVE**



**SPECIFICATIONS**

Max. operating pressure:	210 bar
Rated flow:	30 l/min
Cavity type:	SAE-10-3N
Weight:	0,87 Kg
Manifold:	Aluminium

**NOTES**

-See pages 2.01.030 or 2.01.040 for pressure reducing valve info.

**ORDERING CODES**

Quick code	Description	Ports	
KR000043	KPRL-030-DNSR-HN-G38-N210	G 3/8"	