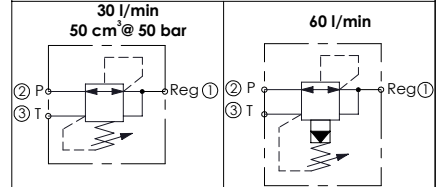
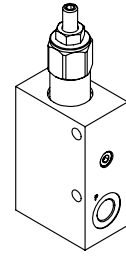
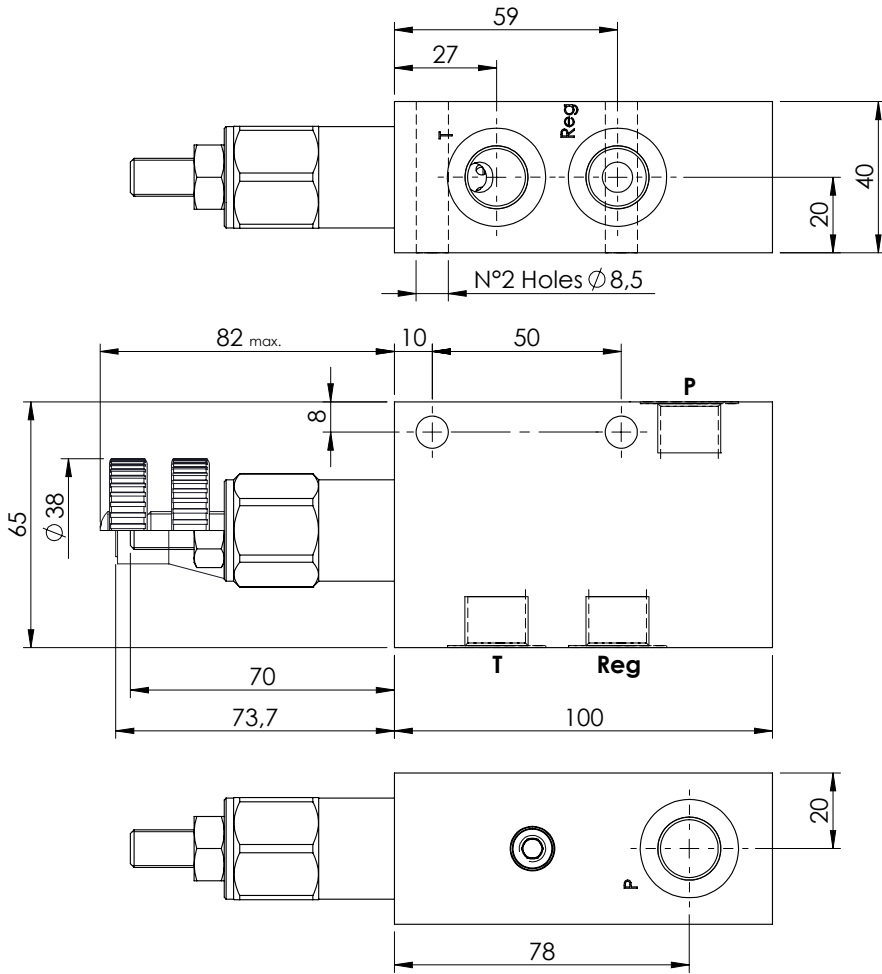


**PRESSURE REDUCING AND RELIEVING IN BODY**

**KPRL-030-DNNR**

**DIRECT/PILOT ACTING  
SPOOL TYPE**



KR000011  
KR000012  
KR000013  
KR000014

KR000015  
KR000016

**SPECIFICATIONS**

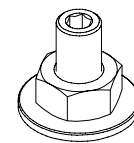
Max. operating pressure:	250 bar
Rated flow:	30 l/min - 60 l/min
Cavity:	SAE-10-3N
Weight:	0,87 Kg
Leakage direct:	50cm <sup>3</sup> @ 50 bar
Manifold:	Aluminium

**SEALING CAP**

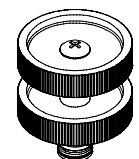
Ordering code:  
AT000022



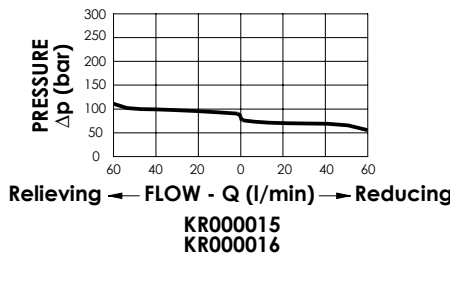
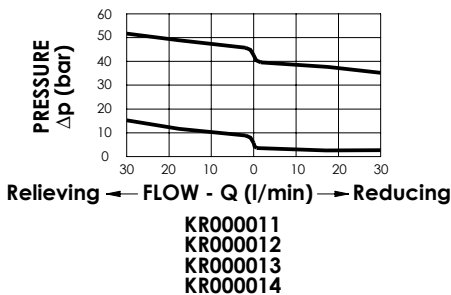
**OPTIONS**



Adjustment with Screw



Adjustment with Handknob



**ORDERING CODES**

Quick code	Description	Ports	Standard setting (bar)	Adjust. range (bar)	Pressure increase (bar/turn)	Options
KR000011	KPRL-030-DNNR-HN-G38-N250	G 3/8"	5	1.5-15	1.6	Adjustment with Screw
KR000012	KPRL-030-DNNR-VN-G38-N250	G 3/8"	5	1.5-15	1.6	Adjustment with Handknob
KR000013	KPRL-030-DNNR-HN-G38-N250	G 3/8"	35	10-50	7	Adjustment with Screw
KR000014	KPRL-030-DNNR-VN-G38-N250	G 3/8"	35	10-50	7	Adjustment with Handknob
KR000015	KPRL-060-PNNR-HN-G38-N250	G 3/8"	80	20-110	37	Adjustment with Screw
KR000016	KPRL-060-PNNR-VN-G38-N250	G 3/8"	80	20-110	37	Adjustment with Handknob