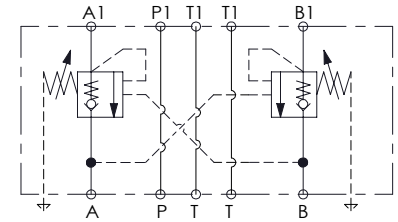
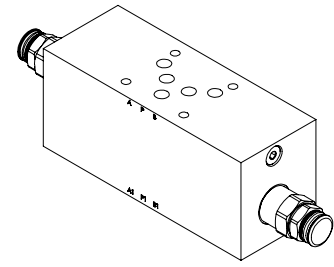
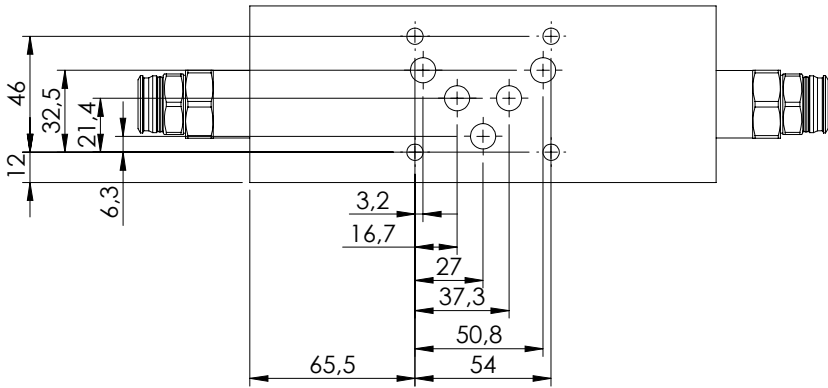
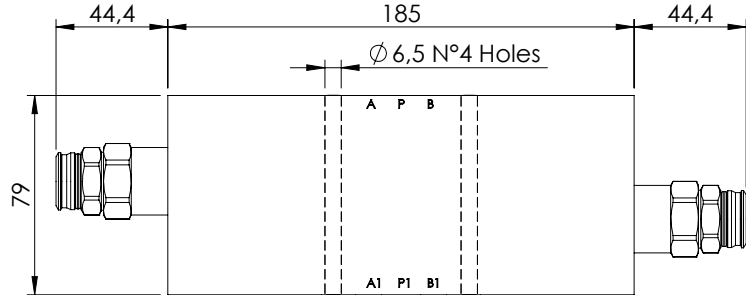
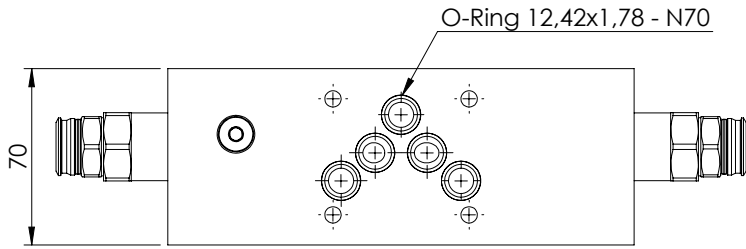


MODULAR VALVE FOR CETOP

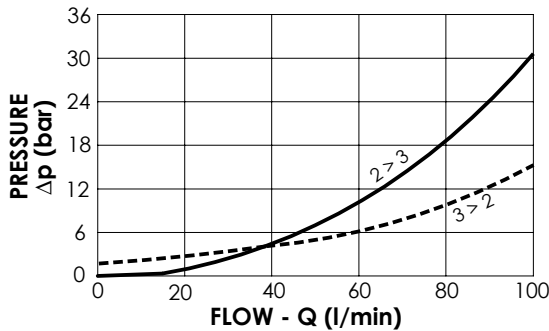
MBDT-100-ARNR

CETOP 5



SPECIFICATIONS

Max. operating pressure:	350 bar
Rated flow:	100 l/min
Manifold:	Steel
Weight:	7,7 kg



NOTES

Setting: at least 1.3 times the load induced pressure

ORDERING CODES

Quick code	Description	Pilot ratio	Main ports size	Standard setting (bar, Q=5 l/min)	Adjust. range (bar)	Pressure increase (bar/turn)
MB000930	MBDT-100-ATNR-04-N10-N350	3,8:1	A,B,P,T: CETOP 5	350	100-350	118