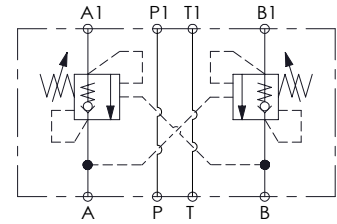
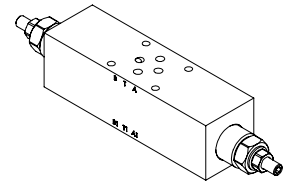
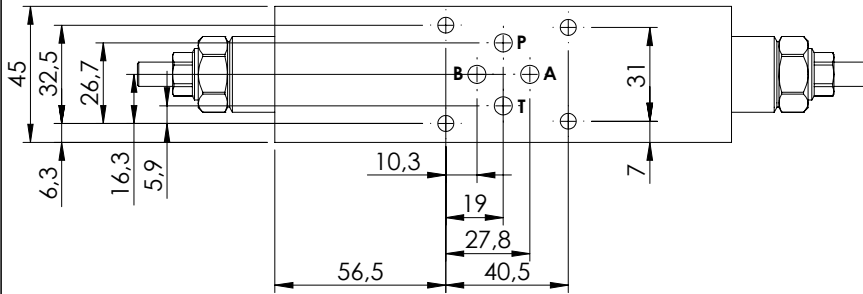
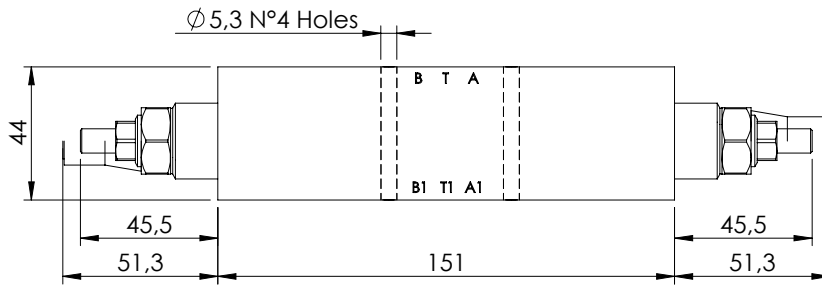
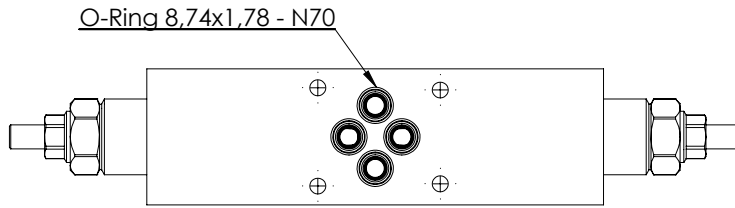


**MODULAR VALVE FOR CETOP**

**MBDN-060-ZTNR**

**DOUBLE ACTING  
CETOP 3**

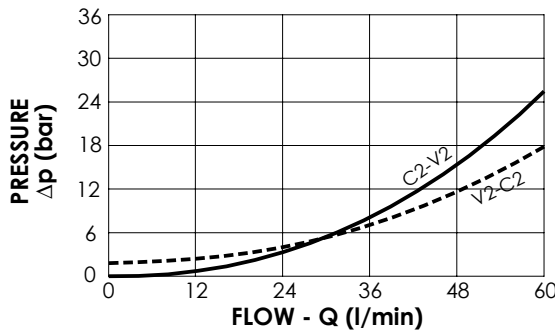
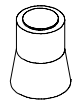


**SPECIFICATIONS**

Max. operating pressure:	350 bar
Rated flow:	60 l/min
Manifold:	Aluminium
Weight:	1,03 kg

**SEALING CAP**

Ordering code:  
**AT000020**



**NOTES**

Setting: at least 1.3 times the load induced pressure

**ORDERING CODES**

Quick code	Description	Pilot ratio	Main ports size	Standard setting (bar, Q=5 l/min)	Adjust. range (bar)	Pressure increase (bar/turn)
MB000517	MBDN-060-ZTNR-04-N06-N350	4,2:1	A,B,P,T: CETOP 3	350	100-350	138
MB000546	MBDN-060-ZTNR-04-N06-N200	4,2:1	A,B,P,T: CETOP 3	200	60-210	62