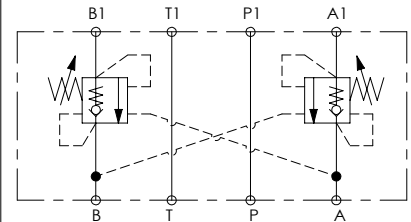
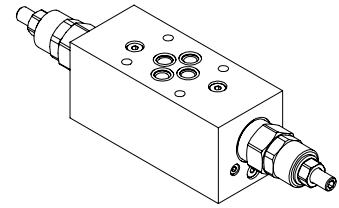
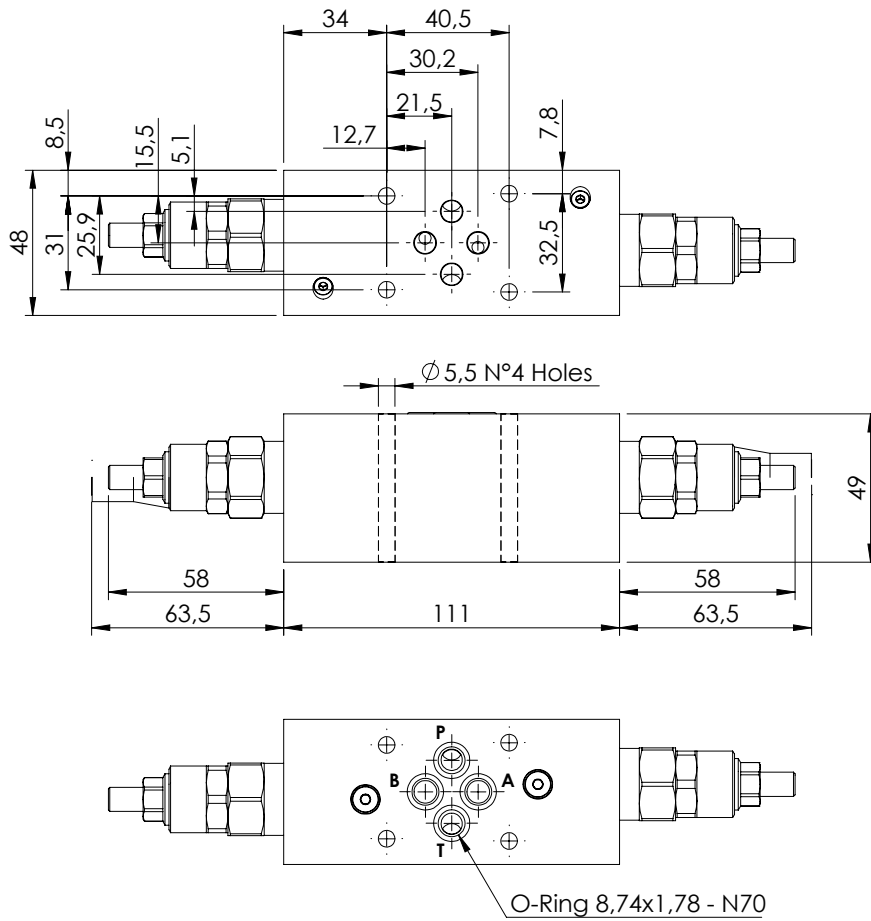


MODULAR VALVE FOR CETOP

**MBDN-030-LTNR**

DOUBLE ACTING  
CETOP 3

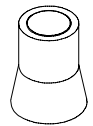


**SPECIFICATIONS**

Max. operating pressure:	210 bar
Rated flow:	30 l/min
Manifold:	Aluminium
Weight:	1 kg

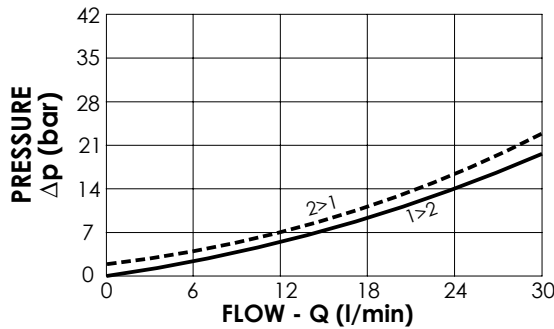
**SEALING CAP**

Ordering code:  
AT000020



**NOTES**

Setting: at least 1.3 times the load induced pressure



**ORDERING CODES**

Quick code	Description	Pilot ratio	Main ports size	Standard setting (bar, Q=5 l/min)	Adjust. range (bar)	Pressure increase (bar/turn)
MB000917	MBDN-030-LTNR-04-N06-N210	4:1	A,B,P,T: CETOP 3	200	70-210	93,5