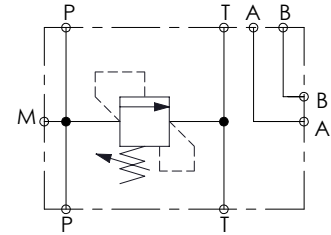
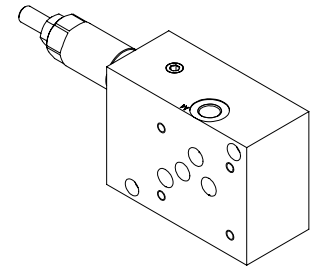
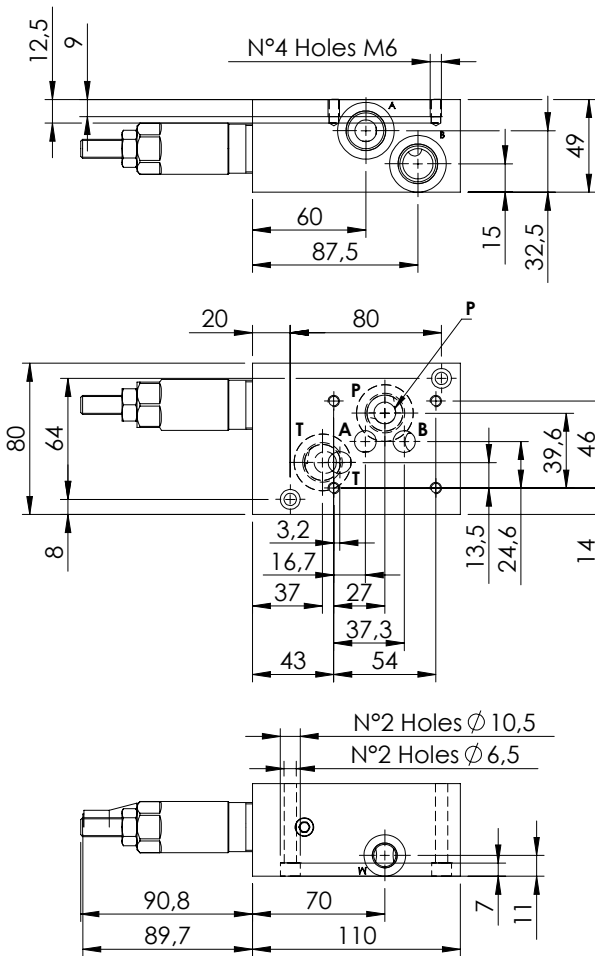


MODULAR VALVE FOR CETOP

**KPLN-080-DPNA**

**CETOP 5  
SUBPLATE**

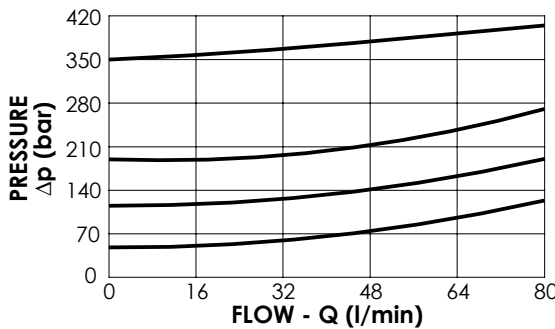
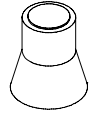


**SPECIFICATIONS**

Max. operating pressure:	350 bar
Rated flow:	80 l/min
Manifold:	Aluminium
Weight:	1,26 kg

**SEALING CAP**

Ordering code:  
AT000021



**NOTES**

**ORDERING CODES**

Quick code	Description	Main ports size	Standard setting (bar, Q=5 l/min)	Adjustm. range (bar)	Pressure increase (bar/turn)
KP000075	KPLN-080-DPNA-HN-N10-N350	A,B,P,T : CETOP 5 A,B,P,T : G 1/2" ;M: G1/4"	350	100-350	42
KP000076	KPLN-080-DPNA-HN-N10-N200	A,B,P,T : CETOP 5 A,B,P,T : G 1/2" ;M: G1/4"	200	60-210	24
KP000077	KPLN-080-DPNA-HN-N10-N100	A,B,P,T : CETOP 5 A,B,P,T : G 1/2" ;M: G1/4"	100	25-100	13
KP000102	KPLN-080-DPNA-HN-N10-N050	A,B,P,T : CETOP 5 A,B,P,T : G 1/2" ;M: G1/4"	50	5-50	9