

FLOW DIVERTERS

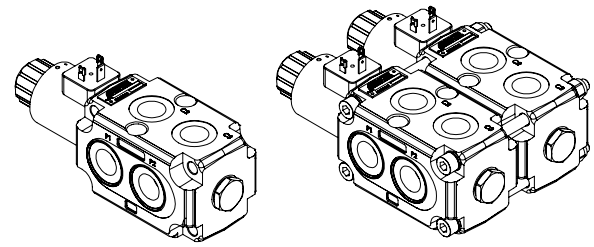
ESFB-100

6 WAYS SINGLE & BANKABLE
FLOW DIVERTERS

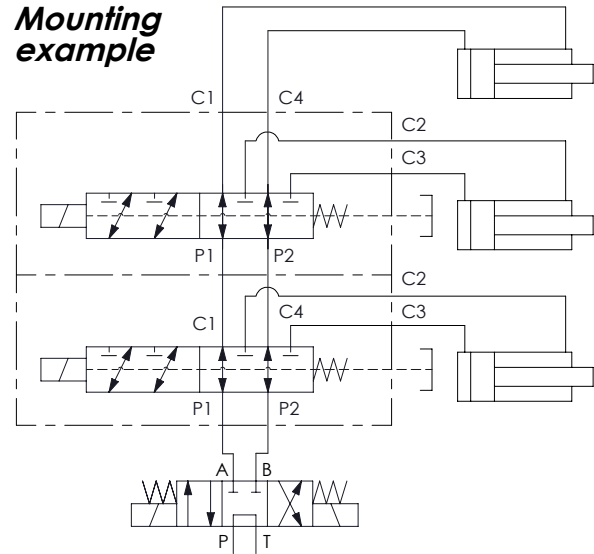


**	Circuit	Transit position
01		
02		
03		

*Only external drain

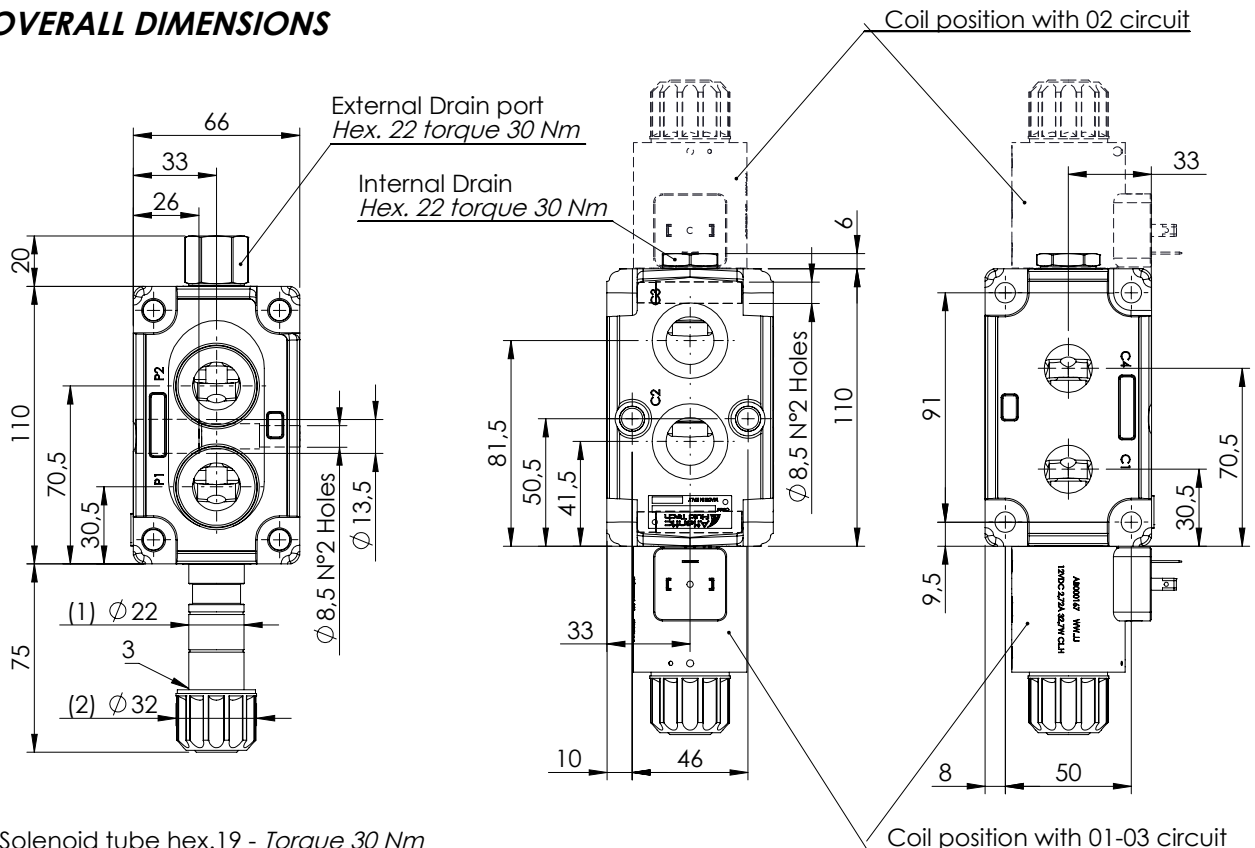


Mounting example



Technical data			
Rated flow		l/min	100
Operating pressure	with internal drain "N"	bar	250
	with external drain "E"	bar	350
	on port D	bar	210
Valve weight		Kg	3,8

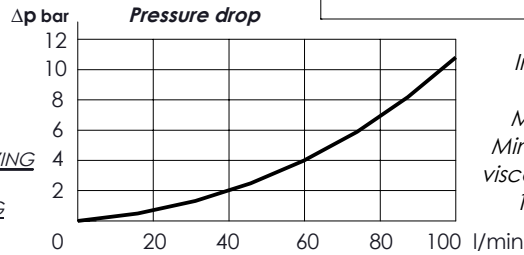
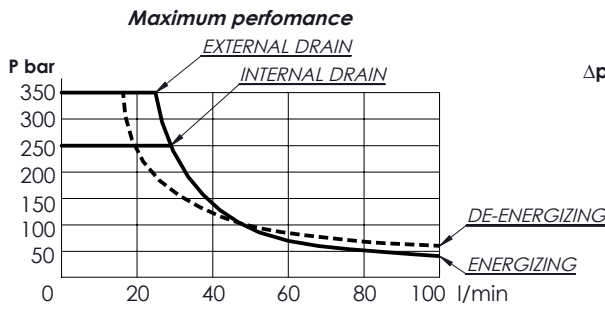
OVERALL DIMENSIONS



- (1) Solenoid tube hex.19 - Torque 30 Nm
- (2) Ring nut for coil locking - Torque 5-6 Nm
- (3) O-Ring Ø 21,5 x 2

Characteristic curves

Measured with hydraulic fluid ISO-VG46 at 40° ± 5°C



Internal leakage on C ports :
 MAX 25 cm³/min
 Mineral oil with 32 cSt
 viscosity, at 40° C and
 100 bar pressure

* OPERATED	Circuit
E Electric 	
N Hydraulic/pneumatic 	

(4) Hydraulic or pneumatic pilot connector: hex 30 mm - Torque 20-22 Nm
 With external drain Pilot Pressure Min. 5 bar
 With internal drain Pilot Pressure is 1/10 of the working pressure

* MANUAL OVERRIDE	Circuit
S Standard 	
V Screw 	
N Without manual override	

* DRAIN	Circuit
N Internal	
E External	

PORTS		
***	Main (C)	Drain (D)
G12	1/2" Gas	1/4" Gas
J12	1/2" JIS	1/4" JIS
S10	7/8-14 UNF	7/16-20 UNF

Other port sizes available

N - Seals in NBR
V - Seals in VITON

CIRCUIT

ESFB - 100 - * * D * - ** - * - * ** * ****

* Voltage (V)	Resistance (Ω) ± 7%	Power (W)	Current (A)
-	Without coil		
A 12 DC	4,41	32,7	2,72
B 24 DC	18,6	31	1,29

Other voltages available on request

* COIL	Type	Protection class
-	Without coil	
HR	DIN 43650 - ISO 4400 Class H	M12 IP65
AJ	AMP JUNIOR Class H	M12 IP65
DT	DEUTSCH DT04-2P-L Class H	M12 IP69

TYPE OF MOUNTING

* Port number	Screw Tie rods	Installation torque
-	-	-
08	M8x125	15-17 Nm
10	M8x190	15-17 Nm
12	M8x255	15-17 Nm
14	M8x320	15-17 Nm