

FLOW DIVERTERS

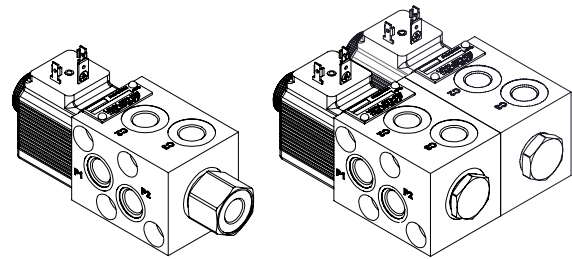
ESFB-025

6 WAYS SINGLE & BANKABLE
FLOW DIVERTERS

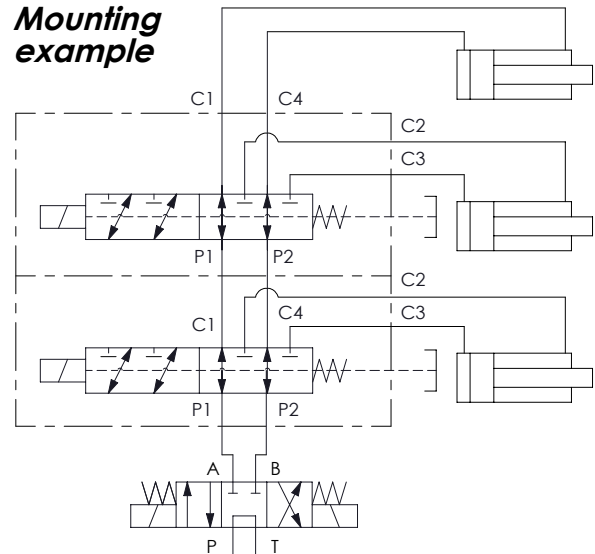


**	Circuit	Transit position
01		
02		
03		

*Only external drain



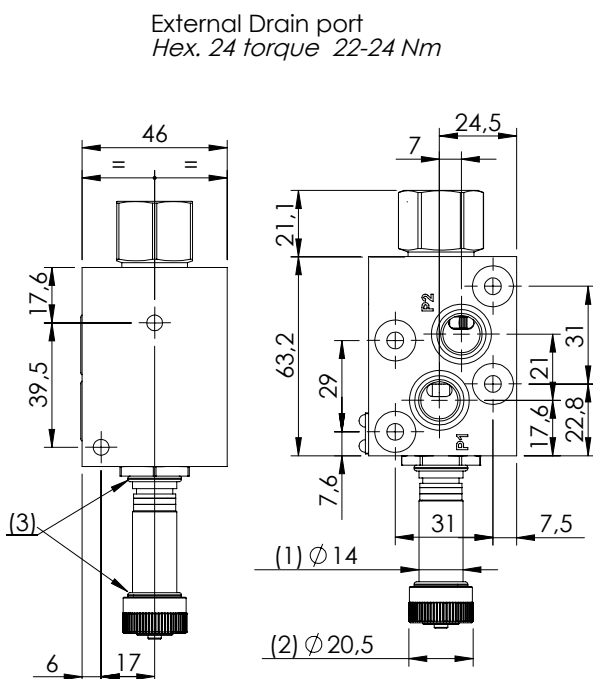
Mounting example



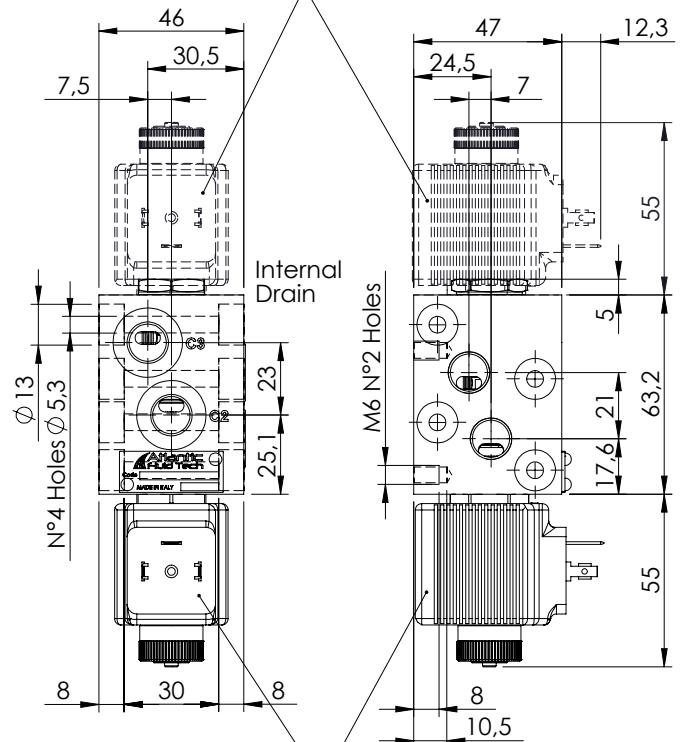
Technical data

Rated flow	l/min	25
Operating pressure	with internal drain "N"	bar 250
	with external drain "E"	bar 310
Valve weight	Kg	1

OVERALL DIMENSIONS



Coil position with 02 circuit

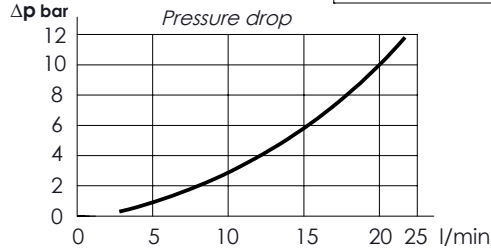
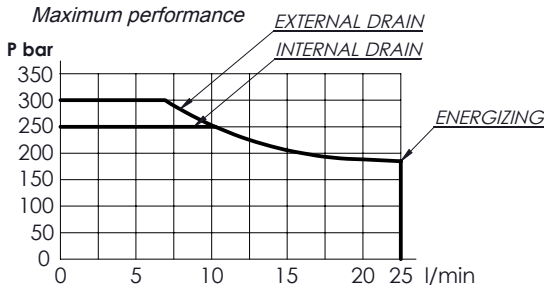


Coil position with 01-03 circuit

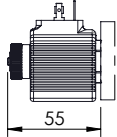



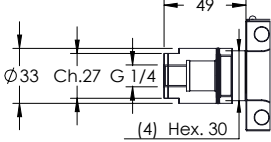
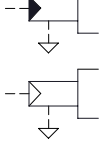
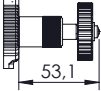
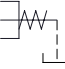
- (1) Solenoid tube hex.17 - Torque 22-24 Nm
- (2) Ring nut for coil locking - Torque 5-6 Nm
- (3) O-Ring Ø 14,00 x 1,78

Characteristic curves

Measured with hydraulic fluid ISO-VG46 at 40° ± 5°C



Internal leakage on C parts :
 MAX 15 cm³/min
 Mineral oil with 32 cSt
 viscosity, at 40° C and
 100 bar pressure

*	OPERATED	<i>Circuit</i>	*	MANUAL OVERRIDE	*	DRAIN	<i>Circuit</i>																		
E	Electric 		S	Standard 	N	Internal 																			
N	Hydraulic/pneumatic 		V	Screw 	E	External 																			
			N	Without manual override	<table border="1"> <tr> <th colspan="3">PORTS</th> </tr> <tr> <td>***</td> <td>Main (C)</td> <td>Drain (D)</td> </tr> <tr> <td>G14</td> <td>1/4" Gas</td> <td>1/4" Gas</td> </tr> <tr> <td></td> <td></td> <td></td> </tr> <tr> <td></td> <td></td> <td></td> </tr> <tr> <td colspan="3">Other port sizes available</td> </tr> </table>			PORTS			***	Main (C)	Drain (D)	G14	1/4" Gas	1/4" Gas							Other port sizes available		
PORTS																									
***	Main (C)	Drain (D)																							
G14	1/4" Gas	1/4" Gas																							
Other port sizes available																									




(4) Hydraulic or pneumatic pilot connector: hex 30 mm - Torque 20-22 Nm
 With external drain Pilot Pressure Min. 5 bar
 With internal drain Pilot Pressure is 1/10 of the working pressure

CIRCUIT

N - Seals in NBR
V - Seals in VITON

ESFB - 025 - * * A * - ** - * - * ** * ****

*	Voltage (V)	Resistance (Ω) ± 7%	Power (W)	Current (A)
-	Without coil			
A	12 DC	5,53	26	2,16
B	24 DC	22,1	26	1,08
Other voltages available on request				

*	COIL	Type	Protection class
-	Without coil		
HR	 DIN 43650 - ISO 4400 Class H	M14	IP65
AJ	 AMP JUNIOR Class H	M14	IP65
DT	 DEUTSCH DT04-2P-L Class H	M14	IP69

TYPE OF MOUNTING

*	Port number	Screw Tie rods	Installation torque
-	6	-	-
08	8	M5x92	5-6 Nm
10	10	M5x138	5-6 Nm
12	12	M5x184	5-6 Nm
14	14	-	-

