

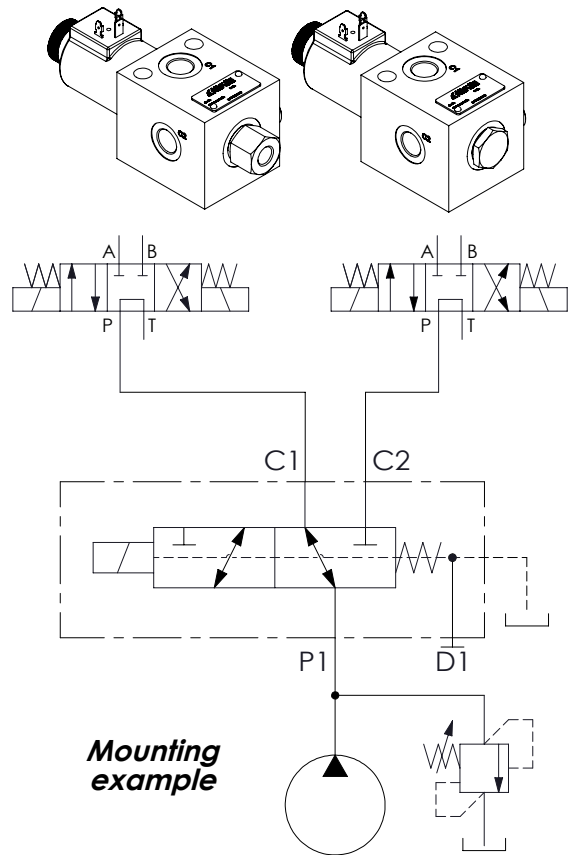
FLOW DIVERTERS

ESCB-050

3 WAYS FLOW DIVERTERS

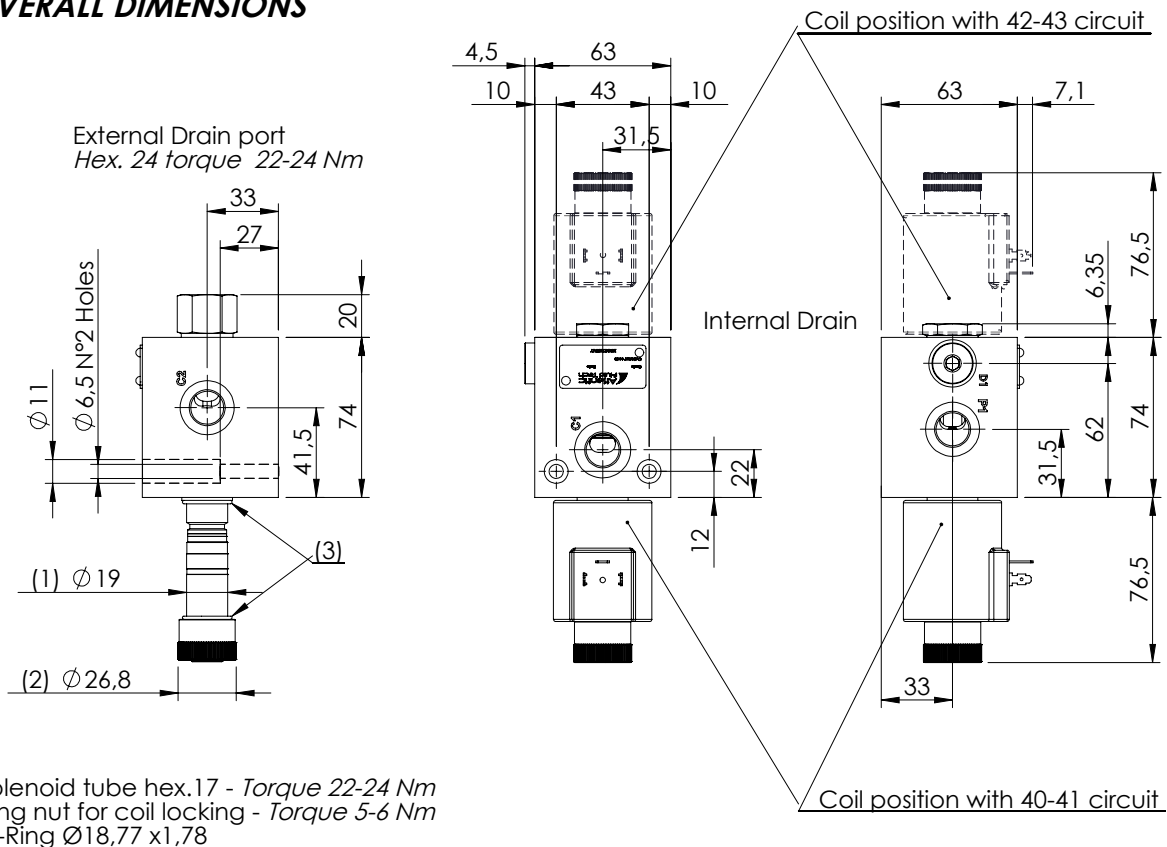


**	Circuit	Transit position
40		
41		
42		
43		



Technical data			
Rated flow	l/min		50
Operating pressure	with internal drain "N"	bar	250
	with external drain "E"	bar	310
Valve weight	Kg		2,6

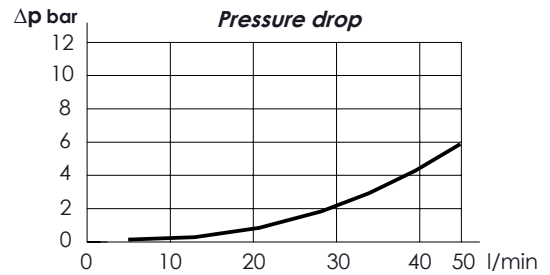
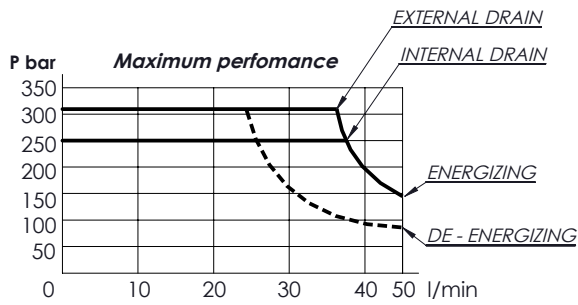
OVERALL DIMENSIONS



- (1) Solenoid tube hex.17 - Torque 22-24 Nm
- (2) Ring nut for coil locking - Torque 5-6 Nm
- (3) O-Ring Ø18,77 x1,78

Characteristic curves

Measured with hydraulic fluid ISO-VG46 at 40° ± 5°C



Internal leakage on C ports : MAX **25** cm³/min - Mineral oil with 32 cSt viscosity, at 40° C and 100 bar pressure

*	OPERATED	<i>Circuit</i>	*	MANUAL OVERRIDE	*	DRAIN	<i>Circuit</i>															
E	Electric 		S	Standard 	N	Internal 																
N	Hydraulic/pneumatic 		P	Push-button 	E	External 																
	<p>(4) Hydraulic or pneumatic pilot connector: hex 30 mm - Torque 20-22 Nm</p> <p>With external drain Pilot Pressure Min. 5 bar</p> <p>With internal drain Pilot Pressure is 1/10 of the working pressure</p>		V	Screw 	<table border="1"> <tr> <th colspan="3">PORTS</th> </tr> <tr> <td>***</td> <td>Main (C)</td> <td>Drain (D)</td> </tr> <tr> <td>G38</td> <td>3/8" Gas</td> <td>1/4" Gas</td> </tr> <tr> <td></td> <td></td> <td></td> </tr> <tr> <td></td> <td></td> <td></td> </tr> </table> <p>Other port sizes available</p>			PORTS			***	Main (C)	Drain (D)	G38	3/8" Gas	1/4" Gas						
PORTS																						
***	Main (C)	Drain (D)																				
G38	3/8" Gas	1/4" Gas																				
			N	Without manual override																		

CIRCUIT

ESC B - 050 - * * C * - ** - * - * ** ***

N - Seals in NBR
V - Seals in VITON

*	Voltage (V)	Resistance (Ω) ± 7%	Power (W)	Current (A)
-	<i>Without coil</i>			
A	12 DC	4,36	33	2,75
B	24 DC	17,45	33	1,37
<i>Other voltages available on request</i>				

*	COIL	Type	Protection class
-	<i>Without coil</i>		
HR	DIN 43650 - ISO 4400 Class H	M8	IP65
AJ	AMP JUNIOR Class H	M8	IP65
DT	DEUTSCH DT04-2P-L Class H	M8	IP69