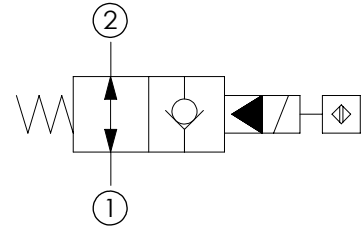
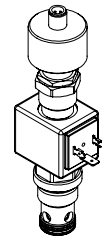
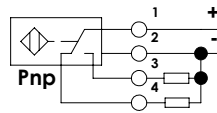
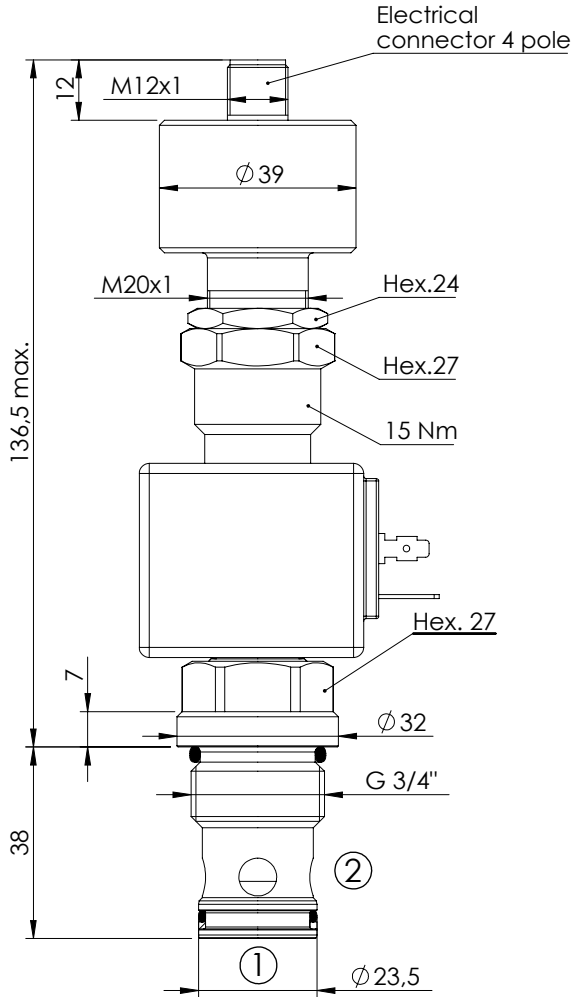


**SOLENOID OPERATED CARTRIDGE**

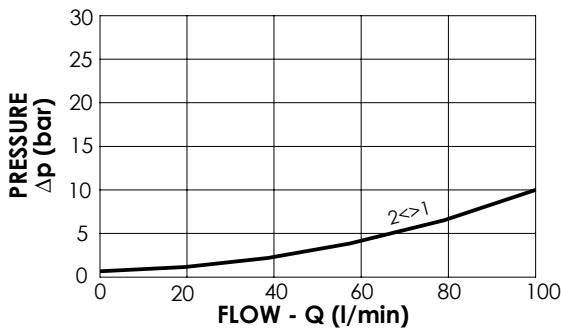
**CEBN-100-NAFN**

**POPPET TYPE  
PROXIMITY SENSOR**



**SPECIFICATIONS**

Max. operating pressure:	350 bar
Rated flow:	100 l/min
Cavity:	VP000057
Weight:	0,6 kg
Coil type:	M7 type
Operating temperature:	-25/+80°C



**NOTES**

Installation torque:	110 - 130 Nm
Seal kit:	RC100057

**ORDERING CODES**

Quick code	Description	Connector	Voltage	Options
CE001094	CEBN-100-NAFN-101-057-V350-12HR	DIN 43650	12V DC	Proximity sensor
CE001095	CEBN-100-NAFN-101-057-V350-24HR	DIN 43650	24V DC	Proximity sensor