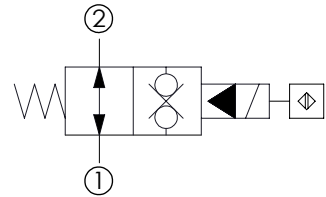
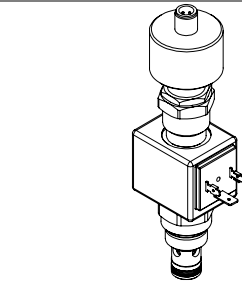
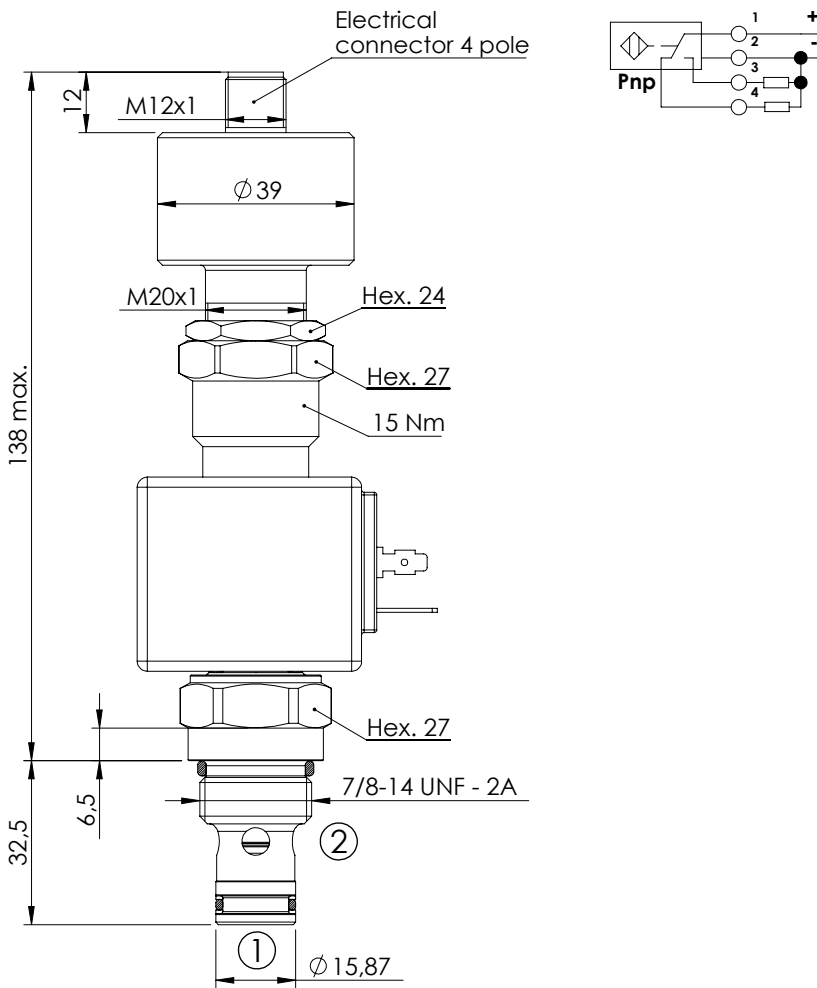


**SOLENOID OPERATED CARTRIDGE**



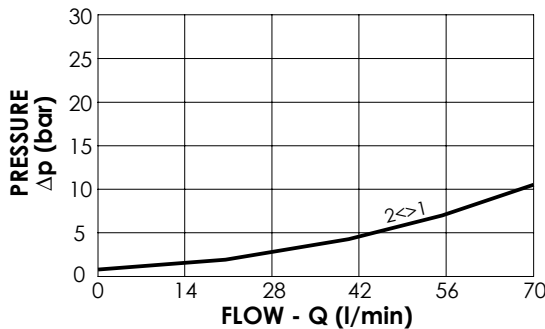
**CEBN-070-NADR**

**POPPET TYPE PROXIMITY SENSOR**



**SPECIFICATIONS**

Max. operating pressure:	350 bar
Rated flow:	70 l/min
Cavity:	SAE-10-2N
Weight:	0,53 kg
Coil type:	M7 type
Operating temperature:	-25/+80°C



**NOTES**

Installation torque:	55 - 62 Nm
Seal kit:	RB100082

**ORDERING CODES**

Quick code	Description	Connector	Voltage	Options
CE001048	CEBN-070-NADR-121-S10-V350-12HR	DIN 43650	12V DC	Proximity sensor
CE001070	CEBN-070-NADR-121-S10-V350-24HR	DIN 43650	24V DC	Proximity sensor