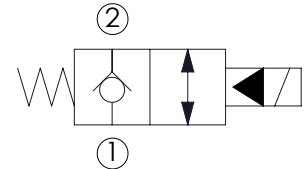
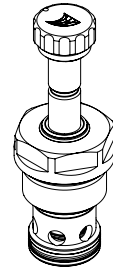
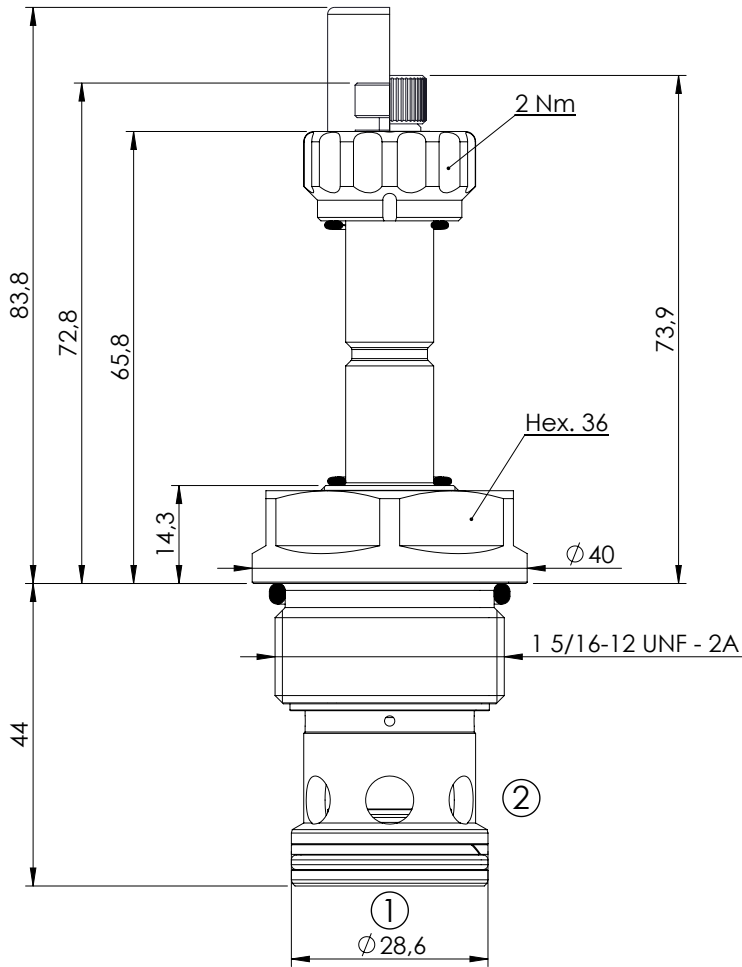


**SOLENOID OPERATED CARTRIDGE**

**CEBN-300-NCFN**

**PILOT OPERATED  
POPPET TYPE**



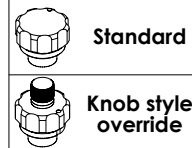
**SPECIFICATIONS**

Max. operating pressure:	350/500 bar
Rated flow:	300 l/min
Cavity:	SAE-16-2N
Weight:	0,36 kg
Min. voltage required:	90% of nominal
Coil type:	M7 type
Seal kit:	RA700084

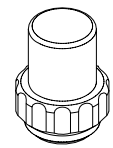
**NOTES**

Installation torque: 118 - 132 Nm

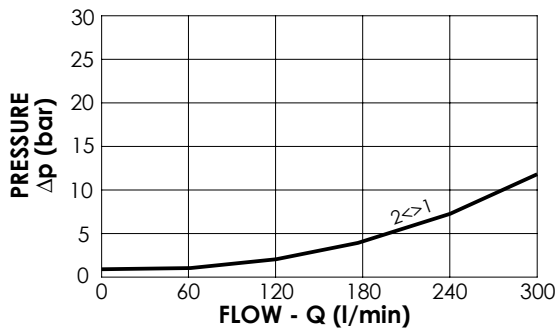
**OPTIONS**



**SEALING CAP**



Ordering code:  
AT000113



**ORDERING CODES**

Quick code	Description	Options	Max operating pressure (bar)	
CE000389	CEBN-300-NCFN-03-S16-N350	Standard	350	
CE000391	CEBN-300-NCFK-03-S16-N350	Knob style override	350	
CE000689	CEBN-300-NCFN-03-S16-N500	Standard	500	
CE000691	CEBN-300-NCFK-03-S16-N500	Knob style override	500	