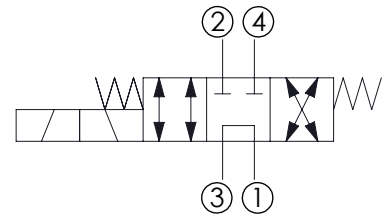
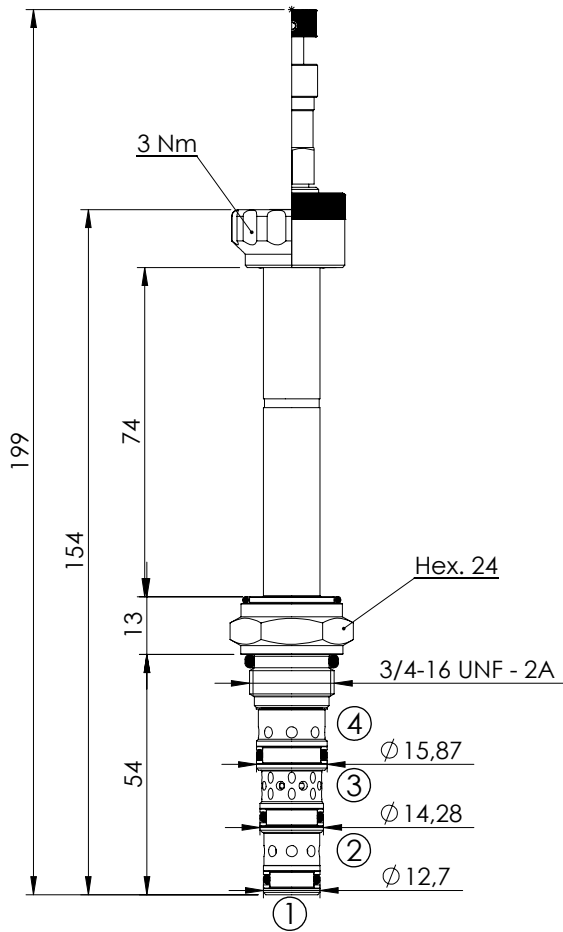


SOLENOID OPERATED CARTRIDGE

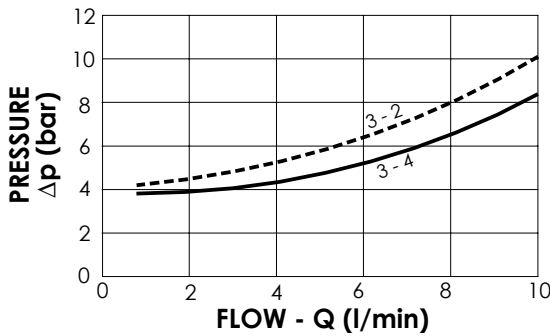
CEES-010-SEFN

**DIRECT OPERATED
SPOOL TYPE**



SPECIFICATIONS

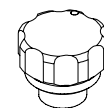
Max. operating pressure:	210 bar
Rated flow:	10 l/min
Cavity:	SAE-08-4N
Weight:	0,18 kg
Min. voltage required:	90% of nominal
Coil type:	M7 type
Leakage:	120cm ³ /min
Seal kit:	RB700101



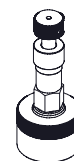
NOTES

Installation torque: 45 - 50 Nm

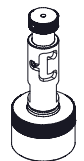
OPTIONS



Standard



Push and pull manual override



Push pull and twist manual override

ORDERING CODES

Quick code	Description	Options
CE000083	CEES-010-SEFN-53-S08-N210	Standard
CE000097	CEES-010-SEFL-53-S08-N210	Push and pull manual override
CE000185	CEES-010-SEFG-53-S08-N210	Push pull and twist manual override