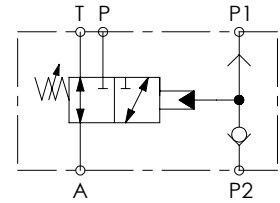
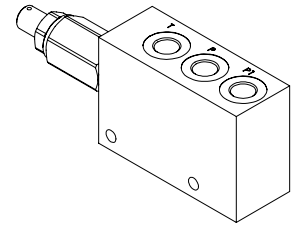
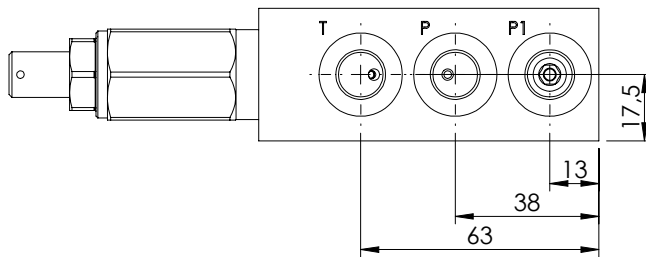
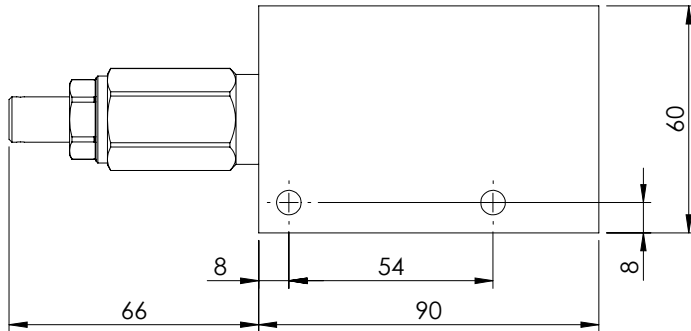
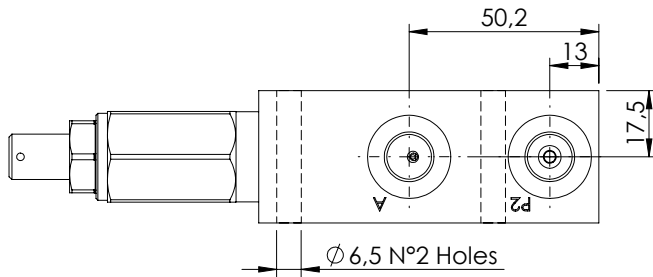


LOAD LIMITING DEVICE

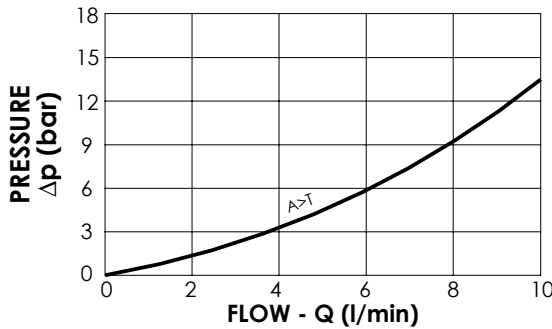
BDMN-010-LLCS

HYDRAULIC PRESSURE
UNLOADING
3 WAYS



SPECIFICATIONS

Max. operating pressure:	210 bar
Rated flow:	8 l/min
Manifold:	Aluminium
Weight:	0,7 kg



NOTES

ORDERING CODES

Quick code	Description	Main ports size	Standard setting (bar, Cracking Pr.)	Adjust. range (bar)	Pressure increase (bar/turn)
BD000104	BDMN-010-LLCS-NP-G14-N210	T,P,P1,A:G 1/4"	5	4-40	3