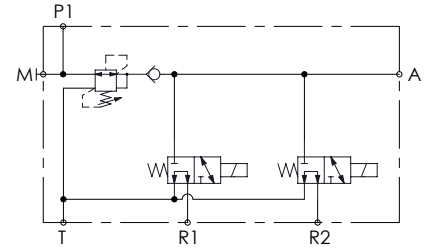
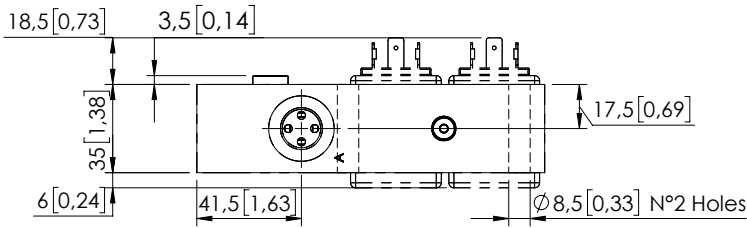


PILOT BLOCK

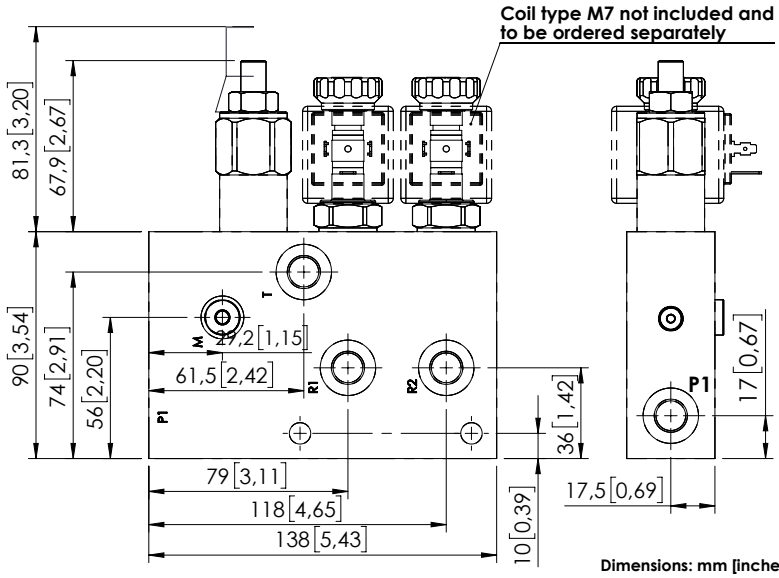
BDEN-010-ALRU

JOYSTICK SAFETY STOP
SOLENOID OPERATED



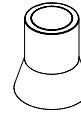
SPECIFICATIONS

Max. operating pressure:	210 bar (3000 psi)
Rated flow:	10 l/min (3 gpm)
Manifold:	Steel
Weight:	1,56 kg (3,4 lbs)
Contamination class to ISO 4406:	See technical spec.
MTF _d :	150 years



Dimensions: mm [inches]

SEALING CAP

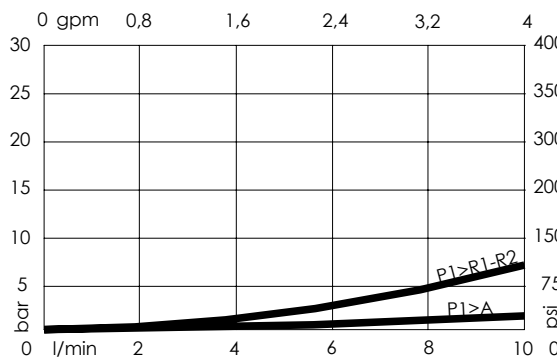


Ordering code:
AT000021

NOTES

See chapter 18.00.000 for coil.

CURVES



ORDERING CODES

Quick code	Description	Ports	Standard setting	Setting range	Pressure increase
BD000197	BDEN-010-ALRU-NP-G38-N210	R1,R2,T,P1: G1/4" A: G3/8" M: G1/8"	35 bar (500 psi)	10-50 bar (150-700 psi)	7 bar/turn (100 psi/turn)