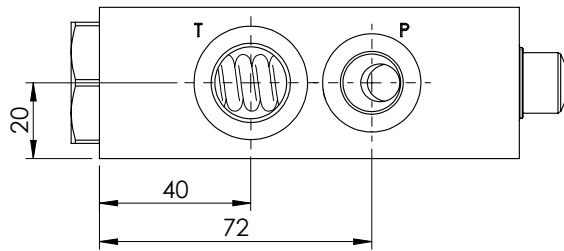
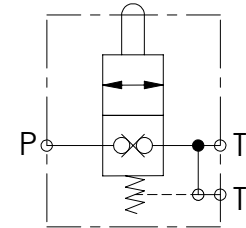
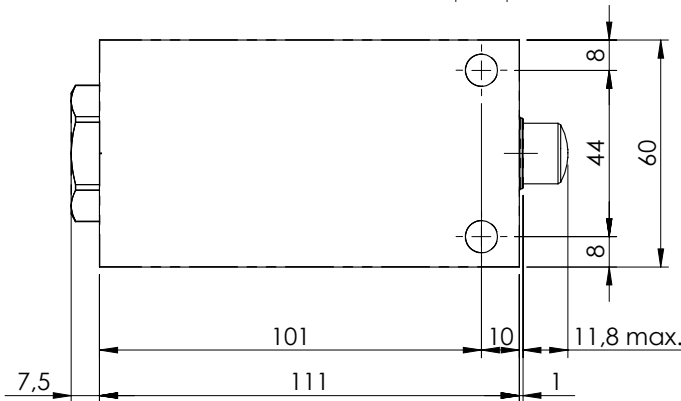
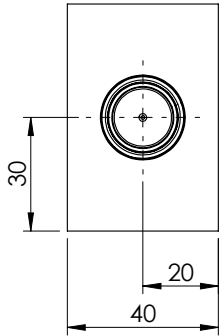
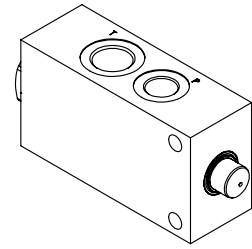
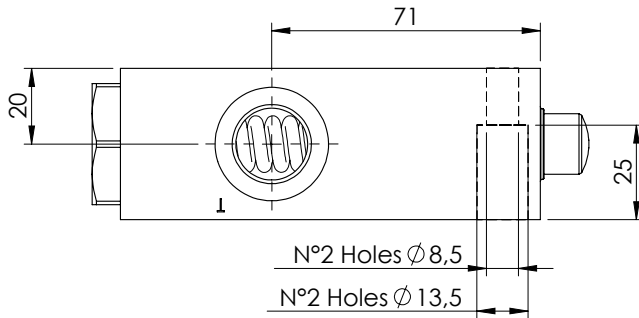


END OF STROKE VALVE

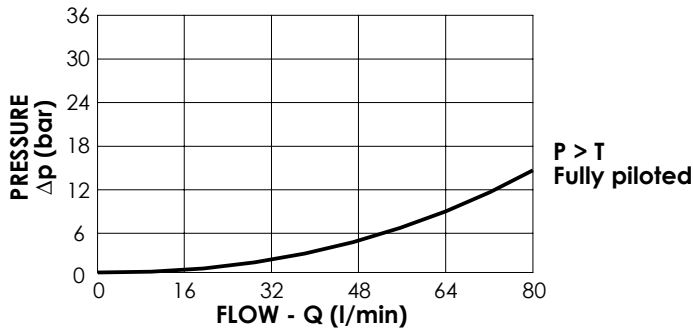
MDTC-080-ABNR

NORMALLY CLOSED



SPECIFICATIONS

Max. operating pressure:	350 bar
Rated flow:	80 l/min
Manifold:	Steel
Weight:	1,71 kg
Maximum stroke:	11,8 mm



ORDERING CODES

Quick code	Description	Main ports size	Cracking pressure (Kg)	Fully open (Kg)
MD000044	MDTC-080-ABNR-NP-G38-N350	P: G 3/8" T: G 1/2"	36	119