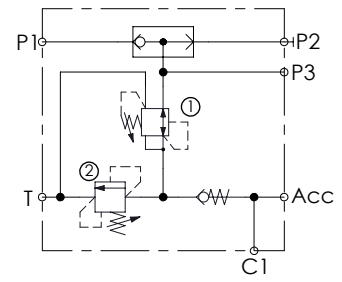
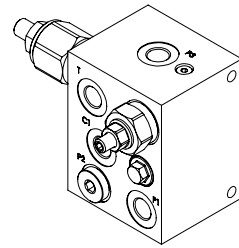
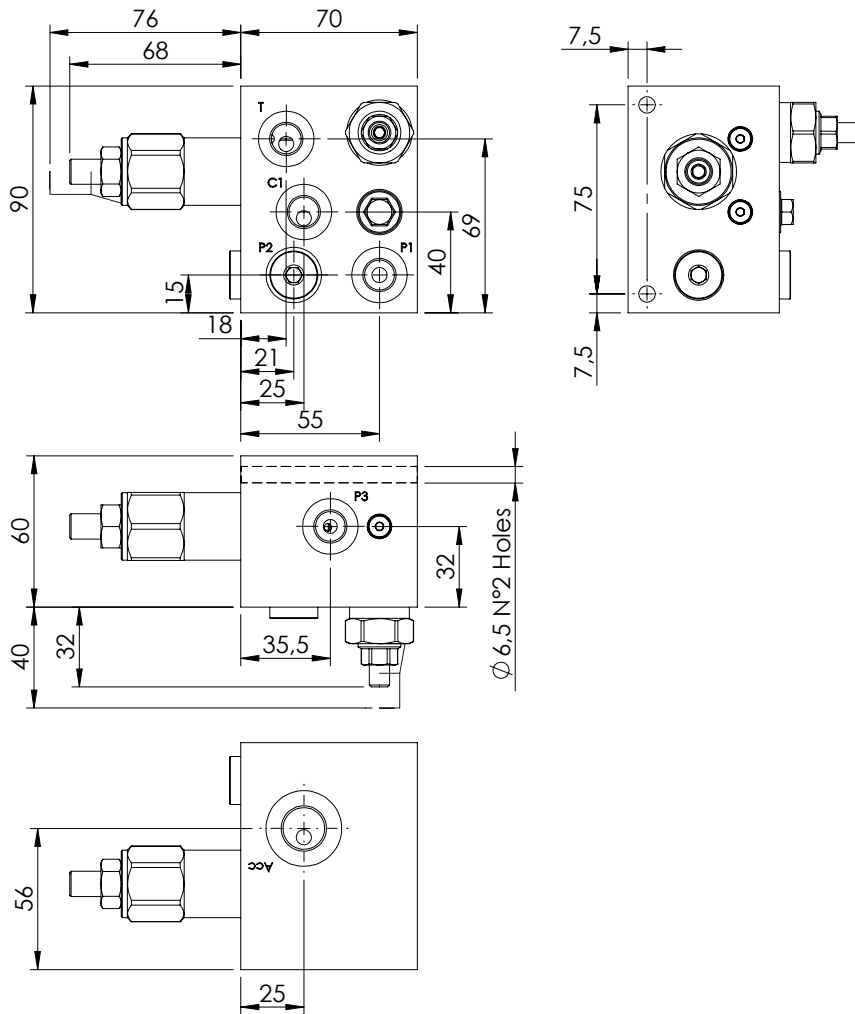


PILOT BLOCK

BPRD-010-ALLS



SPECIFICATIONS

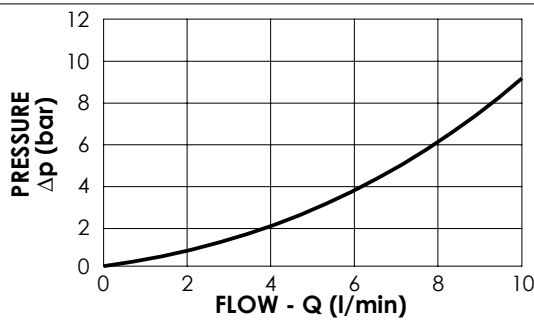
Max. operating pressure:	350 bar
Rated flow:	10 l/min
Weight:	3 kg
Coil type:	Steel

SEALING CAP

Ordering codes:

AT000021 (Valve n°1)		AT000020 (Valve n°2)	
-------------------------	--	-------------------------	--

NOTE



ORDERING CODES

Quick code	Description	Port size	Standard setting (bar)	Adjust. range (bar)	Pressure increase (bar/turn)
BP000113	BPRD-010-ALLS-NP-G14-N350	P1,P2,P3,C1,T: G 1/4" Acc: M18x1,5	① 35 bar ② 50 bar @ 5 l/min	① 10 - 50 ② 10 - 70	① 7 ② 26