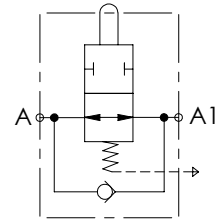
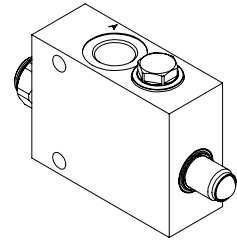
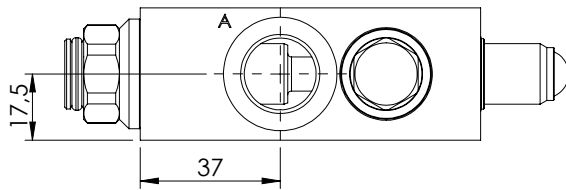
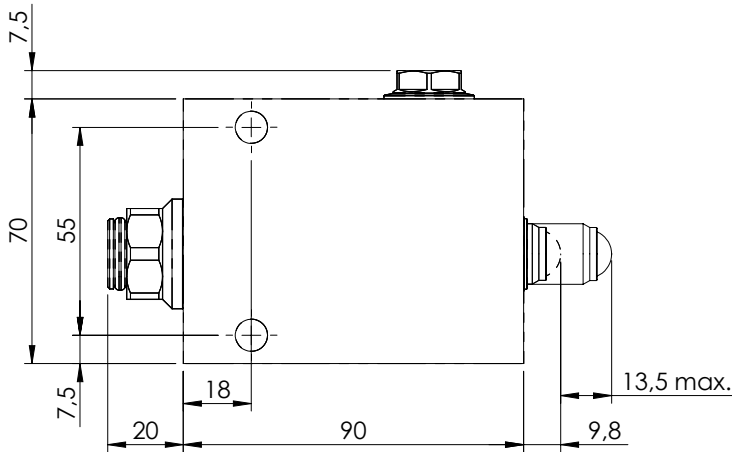
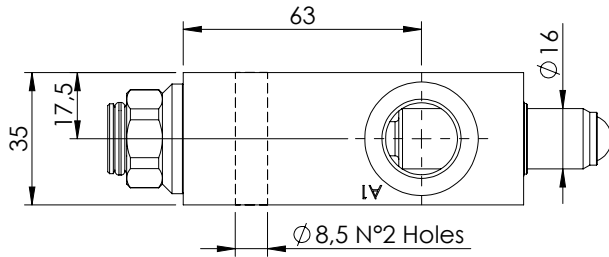


END OF STROKE VALVE

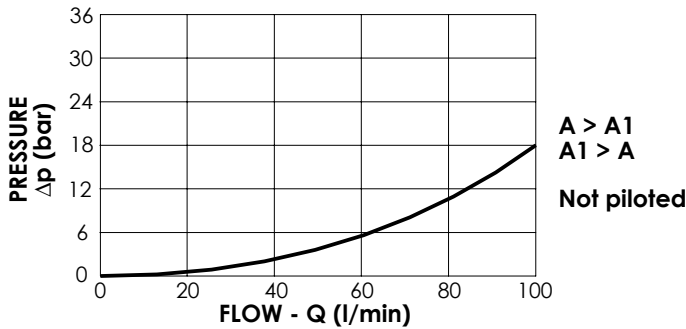
MDTA-100-AVNR

**NORMALLY OPEN
AIR VENTED**



SPECIFICATIONS

Max. operating pressure:	350 bar
Rated flow:	100 l/min
Manifold:	Steel
Weight:	1,54 kg
Maximum stroke:	13,5 mm



ORDERING CODES

Quick code	Description	Main ports size	Cracking pressure (Kg)	Fully closed (Kg)
MD000032	MDTA-100-AVNR-NP-G12-N350	G 1/2"	5,3	14