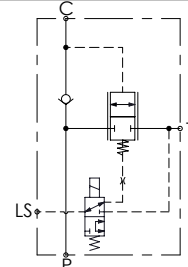
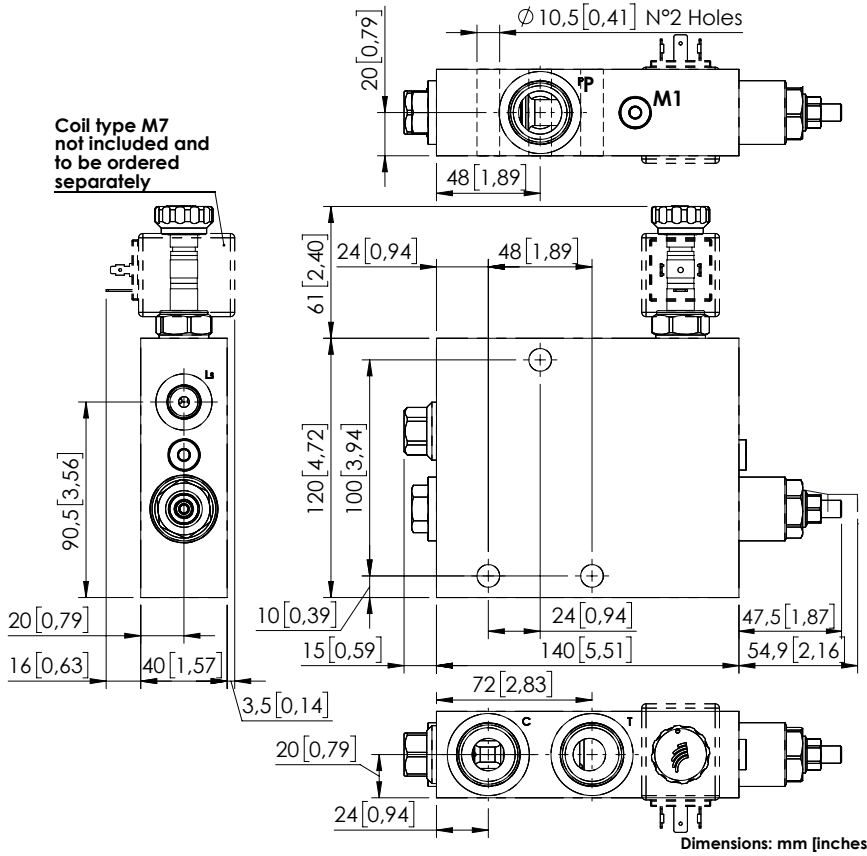


UNLOADING VALVE

# MTTE-150-SLSN

PUMP UNLOADING  
PILOTED



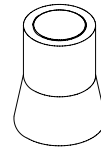
### SPECIFICATIONS

Max. operating pressure:	350 bar (5000 psi)
Rated flow:	150 l/min (40 gpm)
Manifold:	Steel
Weight:	4,68 kg (10,3 lbs)
Coil type:	M7
Contamination class to ISO 4406:	See technical spec.
MTTf:	150 years

### NOTES

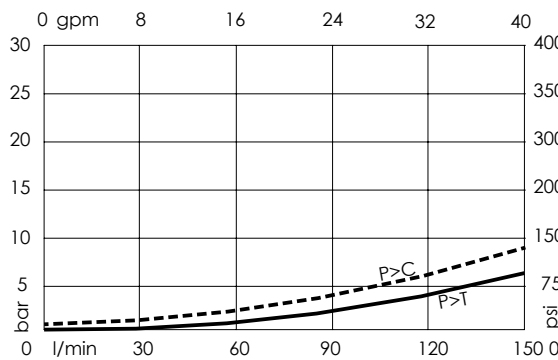
See chapter 18.00.000 for coil.

### SEALING CAP



Ordering code:  
AT000020

### CURVES



### ORDERING CODES

Quick code	Description	Ports
MT000028	MTTE-150-SLSN-NP-U11-N350	P,C,T: 1 1/16" UNF - 2B LS: 9/16" UNF - 2B