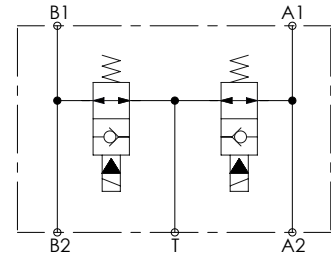
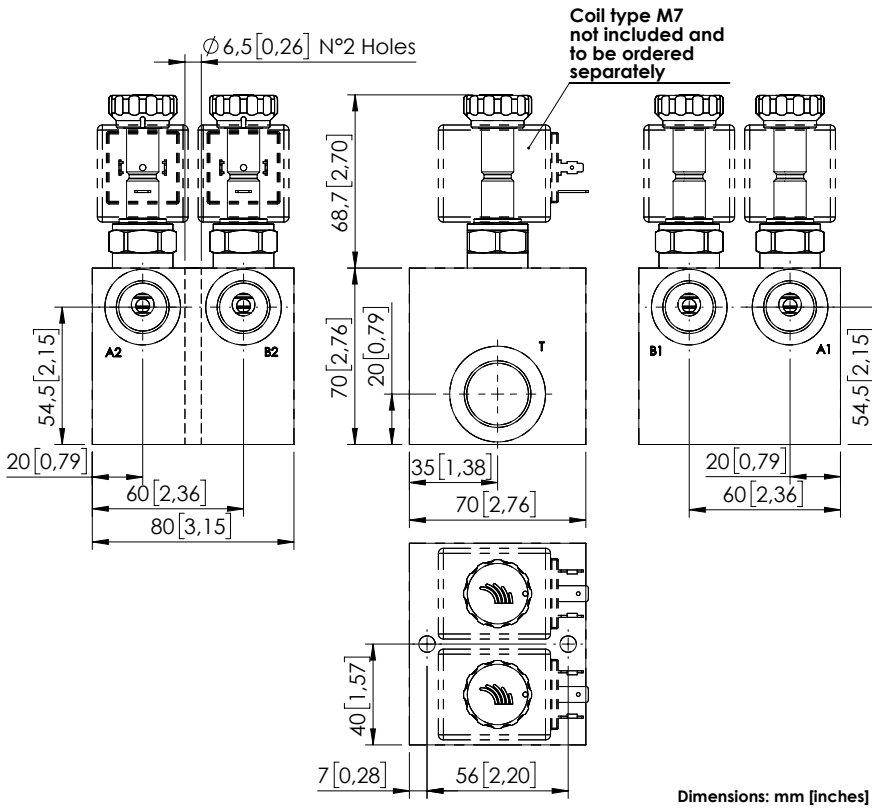


UNLOADING VALVE

BDEN-040-LLEI



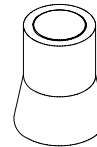
SPECIFICATIONS

Max. operating pressure:	210 bar (3000 psi)
Rated flow:	40 l/min (11 gpm)
Manifold:	Aluminium
Weight:	1,1 kg (2,4 lbs)
Coil type:	M7
Contamination class to ISO 4406:	See technical spec.
MTF _d :	150 years

NOTES

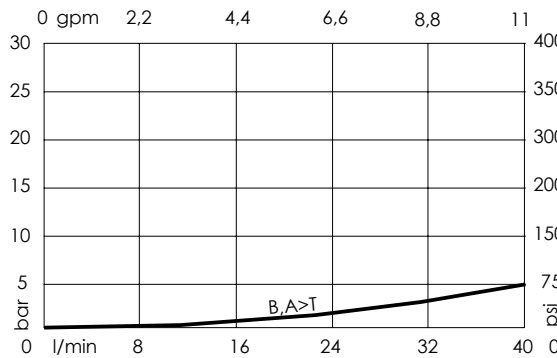
See chapter 18.00.000 for coil.

SEALING CAP



Ordering code:
AT000020

CURVES



ORDERING CODES

Quick code	Description	Ports
BD000200	BDEN-040-LLEI-NP-G12-N210	A1,A2,B1,B2: G 1/2" T: G 3/4"