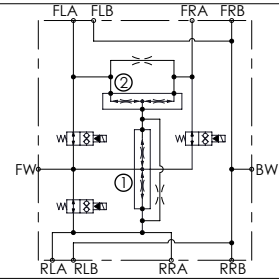
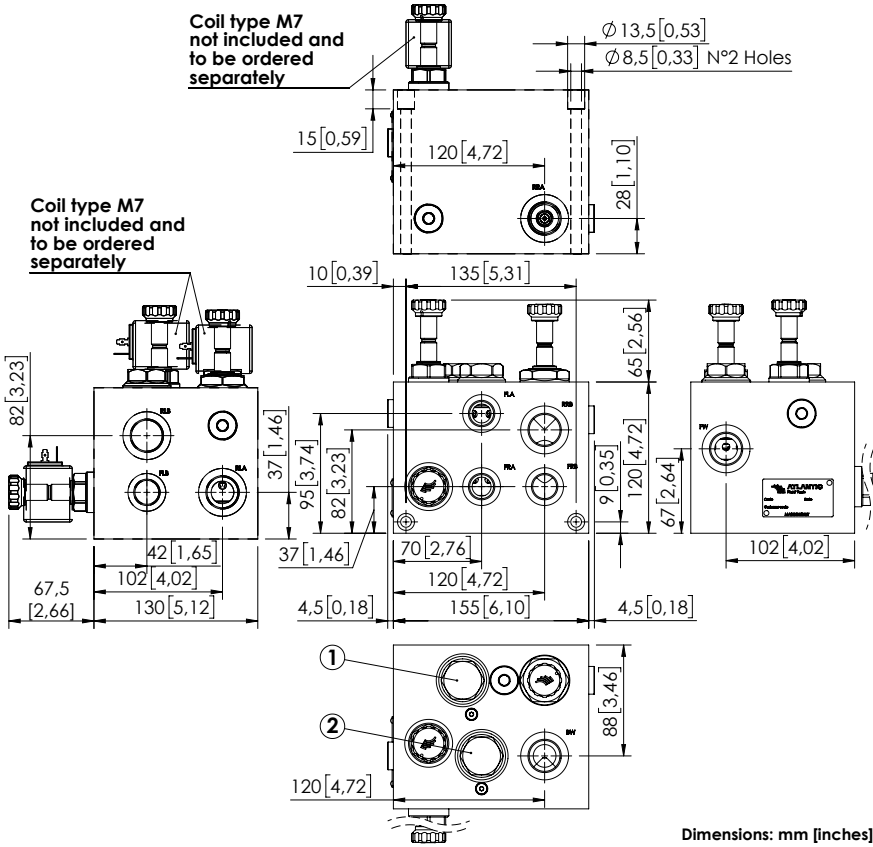


DIFFERENTIAL LOCK VALVE

BDEN-200-ALED

**WITH ELECTRIC BYPASS
FOR THREE MOTORS
TRANSMISSION**



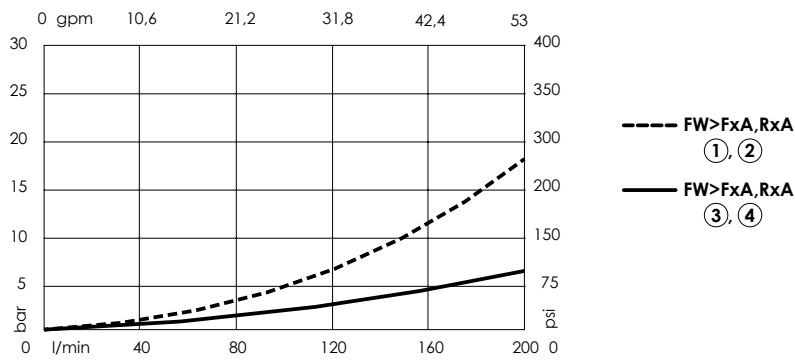
SPECIFICATIONS

Max. operating pressure:	500 bar (7000 psi)
Rated flow:	200 l/min (53 gpm)
Weight:	16,7 kg (36,8 lbs)
Manifold:	Steel
Coil type:	M7
Contamination class to ISO 4406:	See technical spec.
MTF _a :	150 years

NOTES

For other flow ranges contact AFT sales network.
See chapter 18.00.000 for coil.

CURVES



ORDERING CODES

Quick code	Description	Ports	Flow diverter ratio	Inlet range flow
BD000199	BDEN-200-ALED-NP-G34-N500	FW, BW, RLA, RLB, RRA, RRB: G 3/4" FLA, FLB, FRA, FRB: G 1/2"	①: 50%-50% ②: 33%-66%	48-170 l/min (13-45 gpm)