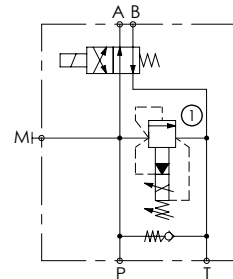
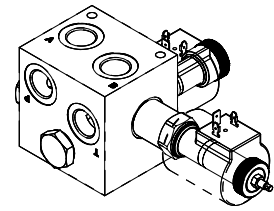
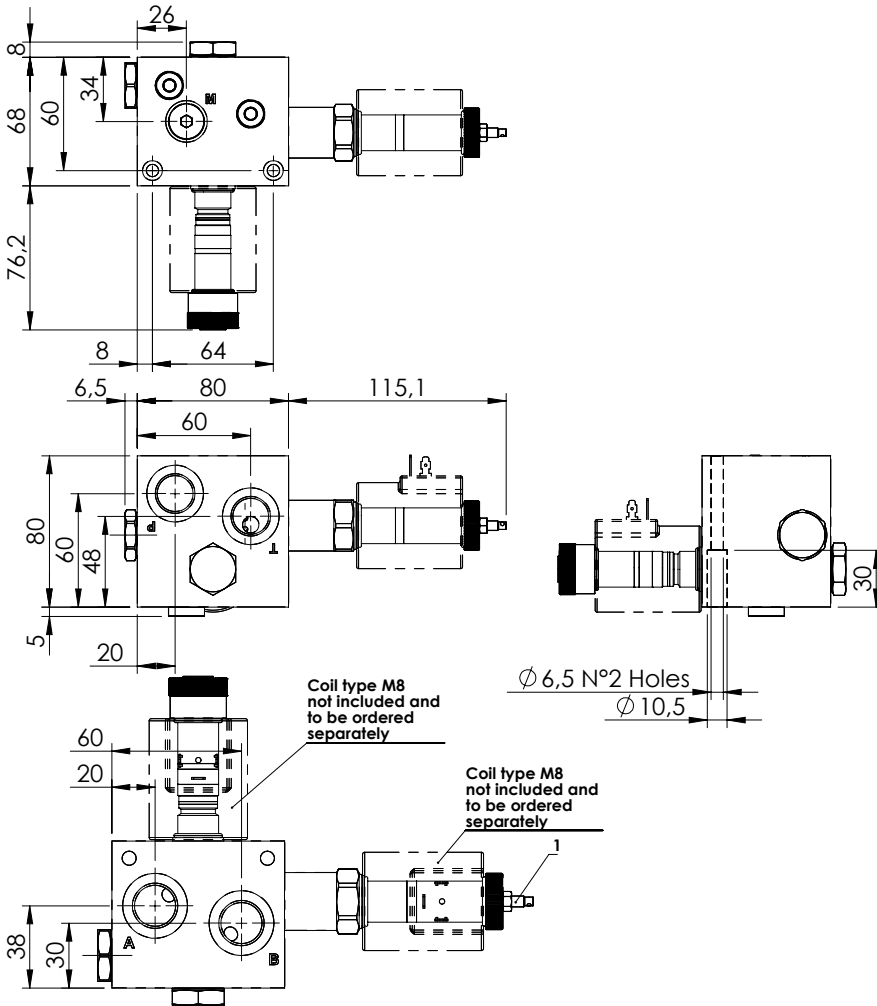


FAN DRIVE BLOCKS

BNND-045-GEC

PROPORTIONAL
PRESSURE CONTROL
WITH INVERSION

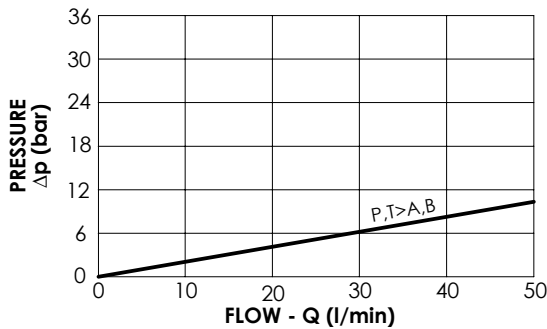


SPECIFICATIONS

Max. operating pressure:	320 bar
Rated flow:	45 l/min
Manifold:	Cast Iron
Weight:	3,29 kg
Coil:	M8

NOTES

- When valve ① is energized the pressure lowers from the setting to.
- See chapter 18.00.000 for coil.



ORDERING CODES

Quick code	Description	Main ports size	Standard setting (bar)	Setting range (bar)
BD000198	BNND-045-GEC-NP-G12-N320	P,T,A,B:G1/2" M:G1/4"	210	100-320