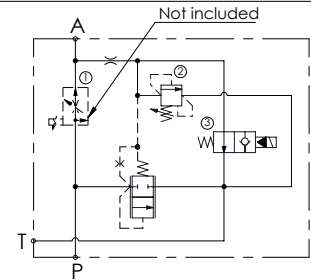
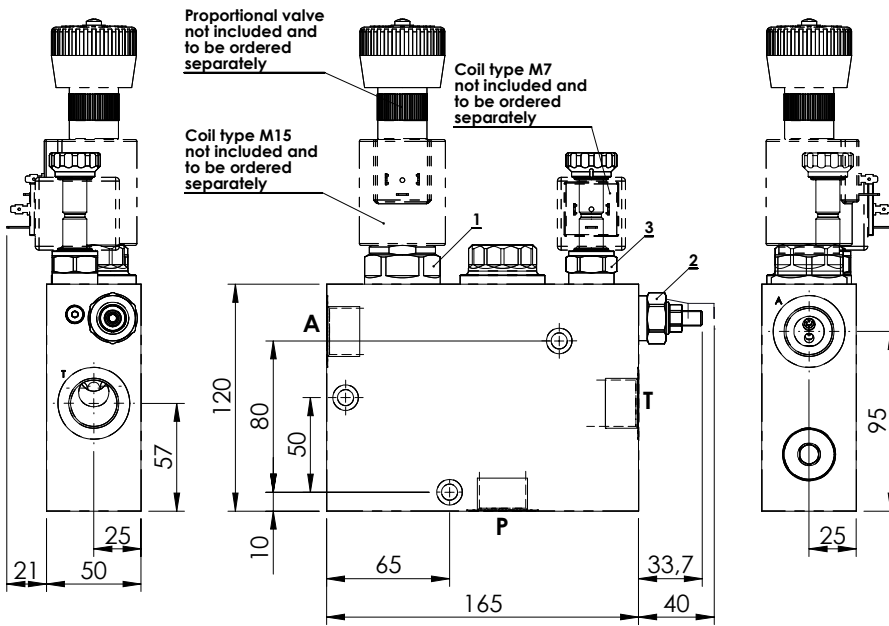
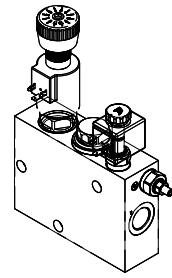
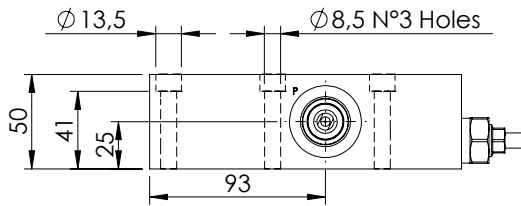


**FLOW REGULATOR**

**MFPC-200-MMAR**

**PROPORTIONAL VALVES WITH UNLOADING WITH RELIEF**

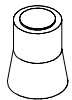


**SPECIFICATIONS**

Max. operating pressure:	320 bar
Rated flow:	200 l/min
Max regulated flow:	0 - 80 l/min
Manifold:	Zinc plated steel
Weight:	6,72 kg
Coil type:	M7 - M15
Cavity type:	SAE-16-3N

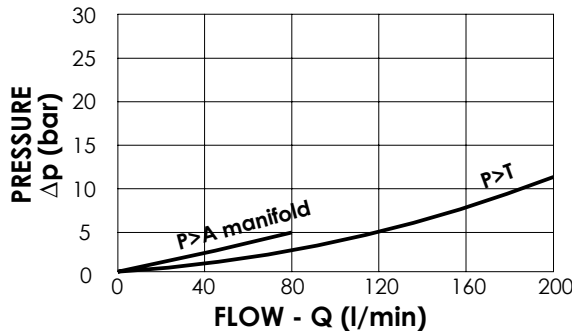
**SEALING CAP**

Ordering code:  
**AT000020**



**NOTES**

- See chapter 18.00.000 for coils.
- See chapter 16.00.000 for proportional valve info.



**ORDERING CODES**

Quick code	Description	Main ports size	Standard setting (bar, Q=5 l/min)	Adjust. range (bar)	Pressure increase (bar/turn)
MF000352	MFPC-200-MMAR-80-G12-N320	P,T,R: G 3/4"	220	140-350	142