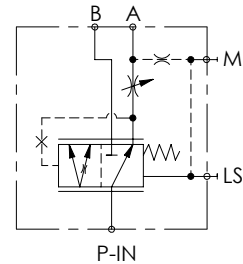
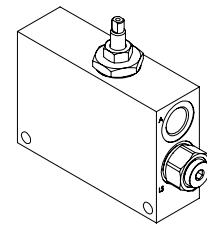
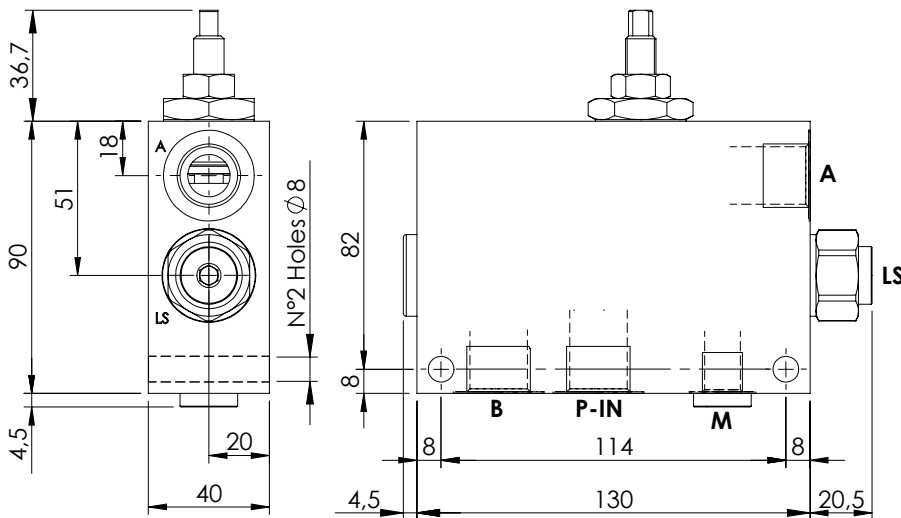
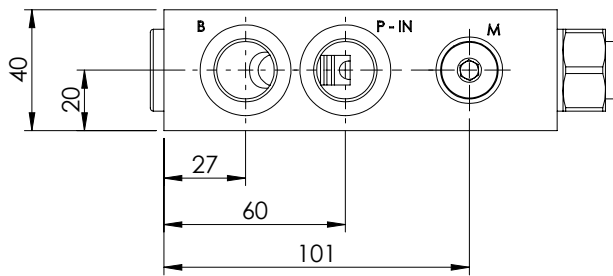


FLOW REGULATOR

MFPT-100-RHAR

**PRESSURE COMPENSATED
PRIORITY FLOW REGULATOR**



SPECIFICATIONS

Max. operating pressure:	350 bar
Rated flow:	100 l/min
Manifold:	Steel
Weight:	3,38 kg

ADJUSTMENT OPTIONS

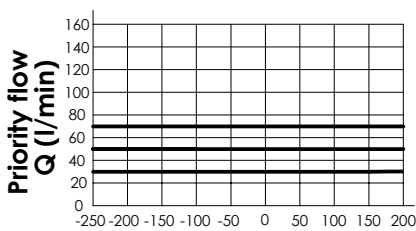


NOTES

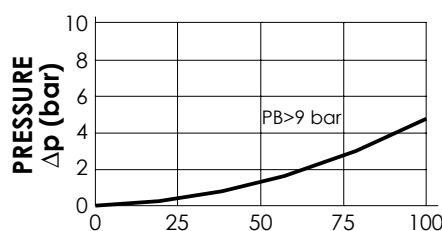
- For correct operation 8-9 bar must be present in port A. For open centre or low pressure systems a 9 bar check valve should be fitted in port A, see page 61.

- Spool switching can be influenced by flexing or stressing the valve body. It is recommended to fit spacers on the mounting bolts between the valve and the mounting surface.

-For options see pag. 22.00.000.



$PB > PA \leftarrow PA - PB \rightarrow PA > PB$
(bar)



FLOW - Q (l/min)

ORDERING CODES

Quick code	Description	Main ports size	Max. inlet flow (l/min)	Max. regulated flow (l/min)	Adjustment options
MF000069	MFPT-100-RHAR-85-G12-N350	P-IN, A, B: G1/2" LS, M: G1/4"	100	85	Screw and locknut