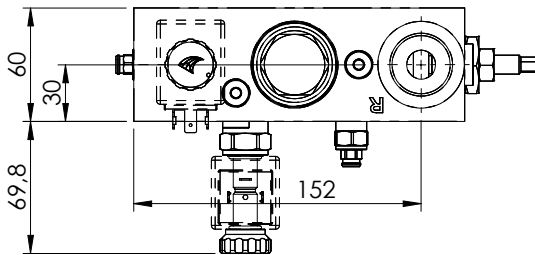
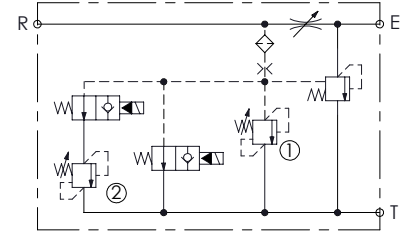
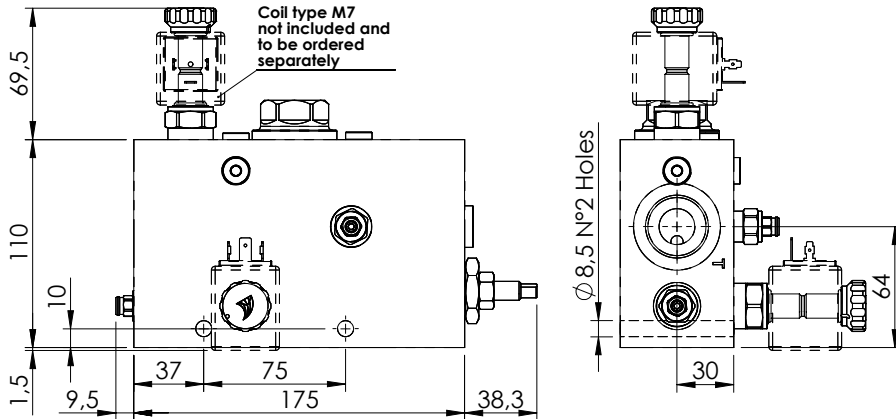
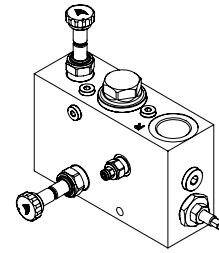
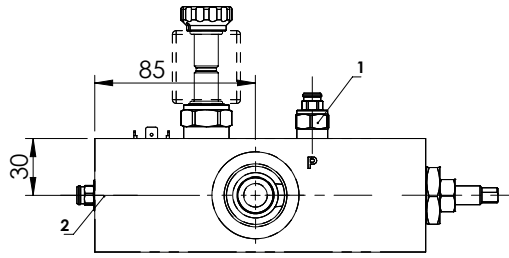


FLOW REGULATOR

MFCT-150-LHTR

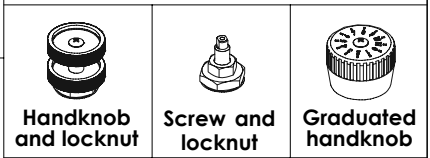
**3 WAYS COMPENSATED
WITH RELIEF VALVE**



SPECIFICATIONS

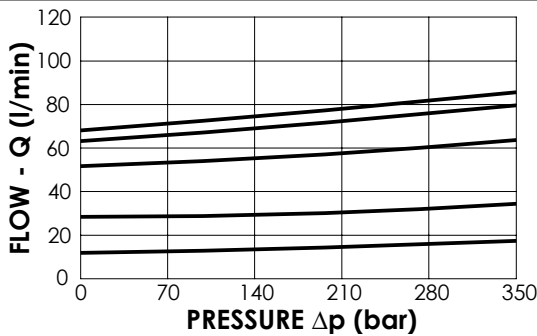
Max. operating pressure:	210 bar
Rated flow:	150 l/min
Regulated Flow:	90 l/min
Manifold:	Aluminium
Weight:	3,48 kg
Coil:	M7

ADJUSTMENT OPTIONS



NOTES

-For options see pag. 22.00.000.



ORDERING CODES

Quick code	Description	Main ports size	Standard setting (bar, Q=5 l/min)	Adjustment range (bar)	Pressure indrease (bar/turn)
MF000344	MFCT-150-LHTR-90-G10-N210	R,E,T: G 1"	① 170 ② 150	① 100-200 ② 100-200	① 75 ② 75