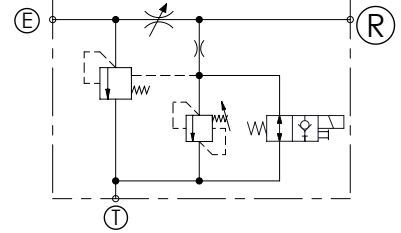
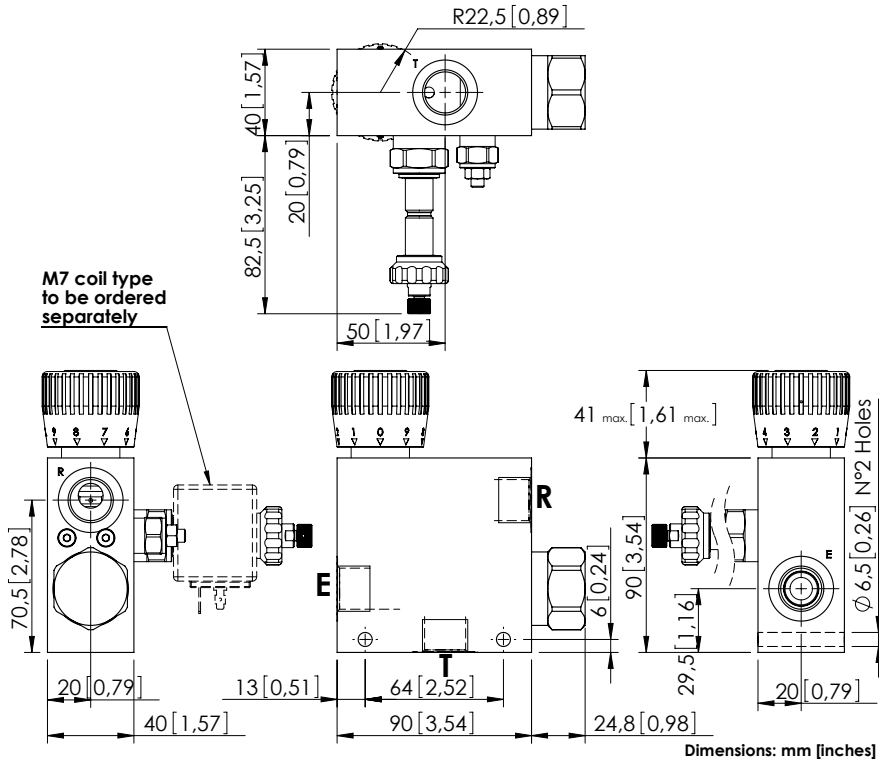


# MFCT-090-MPTR

3 WAYS COMPENSATED  
WITH RELIEF VALVE AND  
ELECTRIC UNLOADING



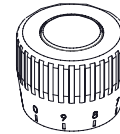
## SPECIFICATIONS

Max. operating pressure:	See table
Rated flow:	See table
Weight:	1,65 kg (3,5 lbs)
Coil type:	M7
Contamination class to ISO 4406:	See technical spec.
MTF <sub>d</sub> :	150 years

## NOTES

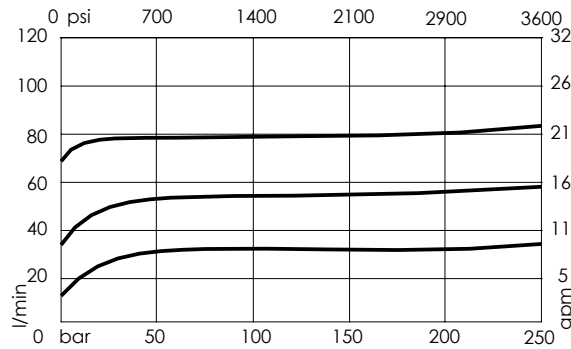
RELIEF VALVE	
Setting range	35-210 bar (500-3000 psi)
Standard setting	210 bar (3000 psi)
Pressure increase	142 bar (2000 psi)

## OPTIONS



Graduated handknob  
for flow regulation  
under pressure

## CURVES



## ORDERING CODES

Quick code	Description	Ports	Manifold	Max. pressure	Max. inlet flow	Max. regulated flow	Options
MF000298	MFCT-090-MPTR-06-G12-N210	E,R,T: G 1/2"	Aluminium	210 bar (3000 psi)	90 l/min (24 gpm)	0-6 l/min (0-1,5 gpm)	Graduated handknob
MF000299	MFCT-090-MPTR-12-G12-N210	E,R,T: G 1/2"	Aluminium	210 bar (3000 psi)	90 l/min (24 gpm)	0-12 l/min (0-3 gpm)	Graduated handknob
MF000300	MFCT-090-MPTR-25-G12-N210	E,R,T: G 1/2"	Aluminium	210 bar (3000 psi)	90 l/min (24 gpm)	0-25 l/min (7 gpm)	Graduated handknob
MF000301	MFCT-090-MPTR-32-G12-N210	E,R,T: G 1/2"	Aluminium	210 bar (3000 psi)	90 l/min (24 gpm)	0-32 l/min (0-9 gpm)	Graduated handknob
MF000302	MFCT-090-MPTR-50-G12-N210	E,R,T: G 1/2"	Aluminium	210 bar (3000 psi)	90 l/min (24 gpm)	0-50 l/min (0-13 gpm)	Graduated handknob
MF000303	MFCT-090-MPTR-63-G12-N210	E,R,T: G 1/2"	Aluminium	210 bar (3000 psi)	90 l/min (24 gpm)	0-63 l/min (0-17 gpm)	Graduated handknob
MF000304	MFCT-090-MPTR-70-G12-N210	E,R,T: G 1/2"	Aluminium	210 bar (3000 psi)	90 l/min (24 gpm)	0-70 l/min (0-19 gpm)	Graduated handknob
MF000305	MFCT-090-MPTR-80-G12-N210	E,R,T: G 1/2"	Aluminium	210 bar (3000 psi)	90 l/min (24 gpm)	0-80 l/min (0-21 gpm)	Graduated handknob