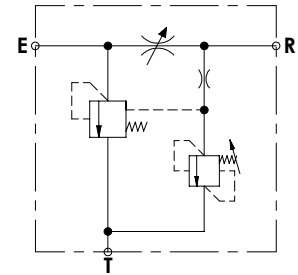
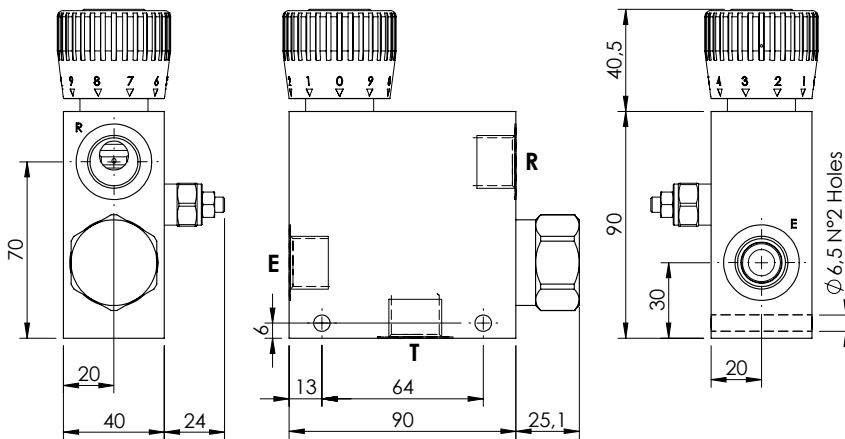
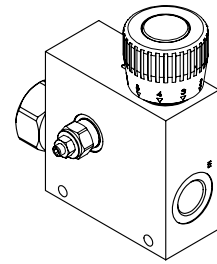
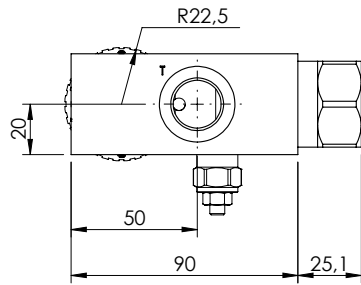


**FLOW REGULATOR**

**MFCT-090-LPZR**

**3 WAYS COMPENSATED  
WITH RELIEF VALVE**

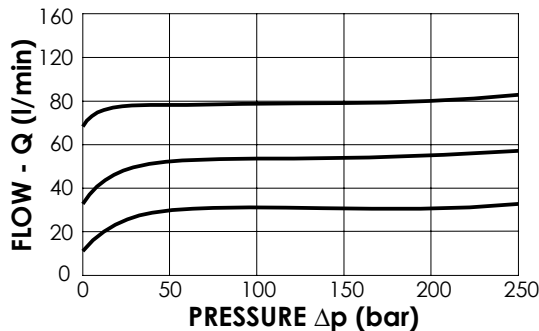
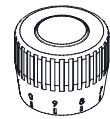


**SPECIFICATIONS**

Max. operating pressure:	210 bar
Rated flow:	90 l/min
Manifold:	Aluminium
Weight:	0,93 kg

**ADJUSTMENT TYPE**

Graduated  
handknob  
for flow regulation  
under pressure



**RELIEF VALVE**

Setting range:	35 - 210 bar
Standard setting:	210 bar

**ORDERING CODES**

Quick code	Description	Main ports size	Regulated flow range (l/min)	Adjustment type
MF000218	MFCT-090-LPZR-06-G12-N210	G 1/2"	0 - 6	Graduated handknob
MF000219	MFCT-090-LPZR-12-G12-N210	G 1/2"	0 - 12	Graduated handknob
MF000220	MFCT-090-LPZR-25-G12-N210	G 1/2"	0 - 25	Graduated handknob
MF000221	MFCT-090-LPZR-32-G12-N210	G 1/2"	0 - 32	Graduated handknob
MF000222	MFCT-090-LPZR-50-G12-N210	G 1/2"	0 - 50	Graduated handknob
MF000223	MFCT-090-LPZR-63-G12-N210	G 1/2"	0 - 63	Graduated handknob
MF000224	MFCT-090-LPZR-70-G12-N210	G 1/2"	0 - 70	Graduated handknob
MF000225	MFCT-090-LPZR-80-G12-N210	G 1/2"	0 - 80	Graduated handknob