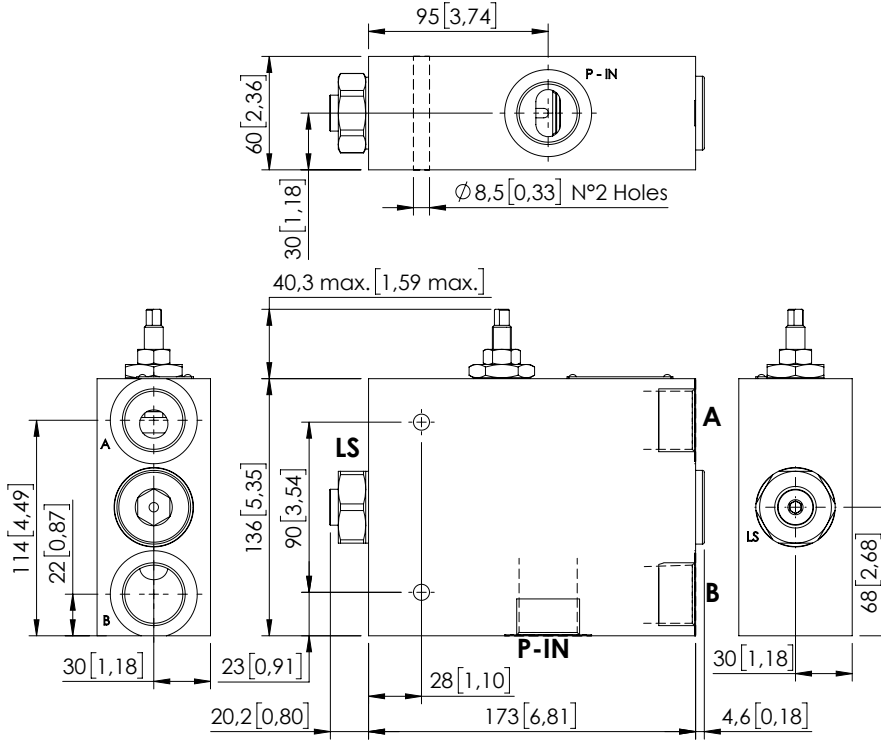


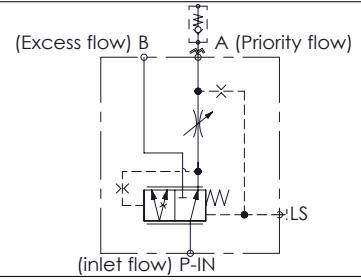
FLOW REGULATOR

MFPT-300-RHAR

PRESSURE COMPENSATED
PRIORITY



Dimensions: mm [inches]



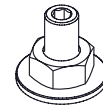
SPECIFICATIONS

| | |
|----------------------------------|--------------------------|
| Max. operating pressure: | 350 bar (5000 psi) |
| Rated flow: | 300 l/min (79 gpm) |
| Regulated flow: | 1-220 l/min (0,3-58 gpm) |
| Manifold: | Steel |
| Weight: | 9,9 kg (21,8 lbs) |
| Contamination class to ISO 4406: | See technical spec. |
| MTF _d : | 150 years |

NOTES

For options see pag. 22.00.000

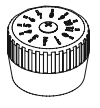
OPTIONS



Screw and locknut

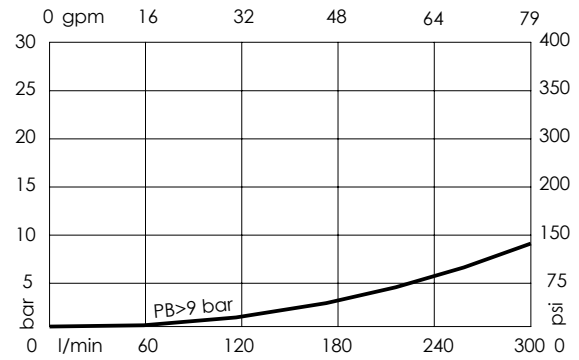
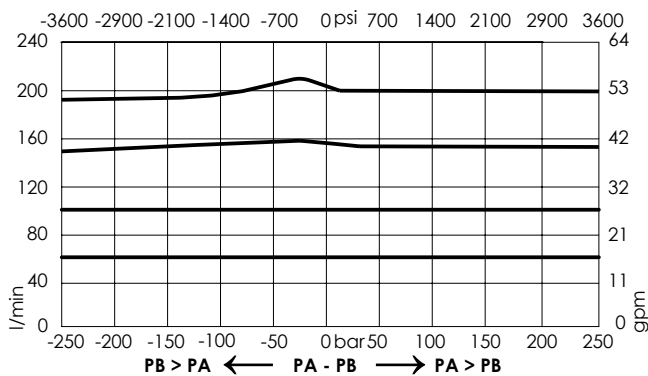


Handknob and locknut



Graduated handknob

CURVES



ORDERING CODES

| Quick code | Description | Ports | Options |
|------------|---------------------------|------------------------------|-------------------|
| MF000283 | MFPT-300-RHAR-20-G10-N350 | P-IN,A,B: G 1" LS: G 1/4" | Screw and locknut |
| | | | |
| | | | |
| | | | |
| | | | |