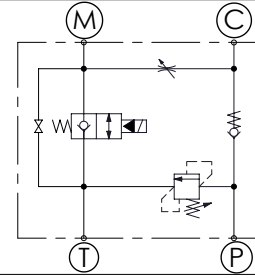
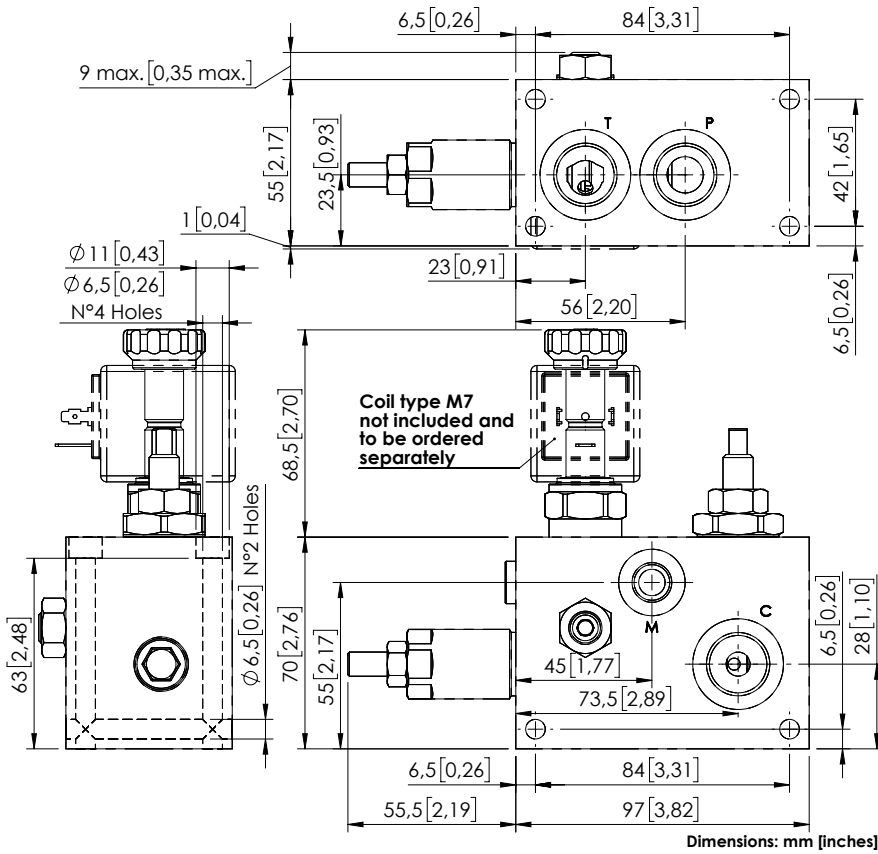


BPND-025-LLET

SOLENOID OPERATED VALVES
STANDARD INTEGRATED CIRCUITS



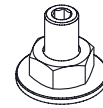
SPECIFICATIONS

Max. operating pressure:	250 bar (5000 psi)
Rated flow:	25 l/min (7 gpm)
Manifold:	Aluminium
Weight:	1,3 kg (2,9 lbs)
Coil type:	M7
Contamination class to ISO 4406:	See technical spec.
MTTF _a :	150 years

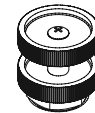
NOTES

For options see pag. 22.00.000

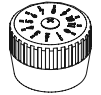
OPTIONS



Screw and locknut

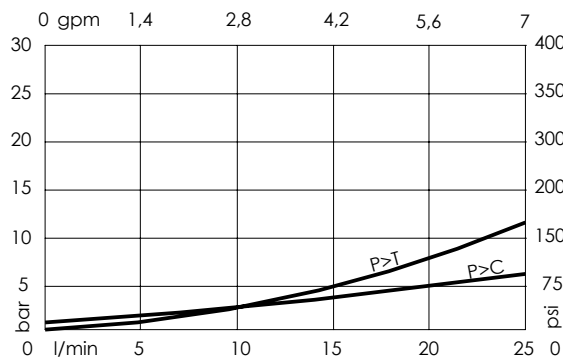


Handknob and locknut



Graduated handknob

CURVES



ORDERING CODES

Quick code	Description	Ports	Standard setting Q=5 l/min (1,3 gpm)	Adjustment range	Pressure increase	Options
BP000081	BPND-025-LLET-NP-G12-N250	P,T,C: G 1/2" M: G 1/4"	200 bar (2900 psi)	50-210 bar (700-3000 psi)	42 bar/turn (600 psi/turn)	Screw and locknut