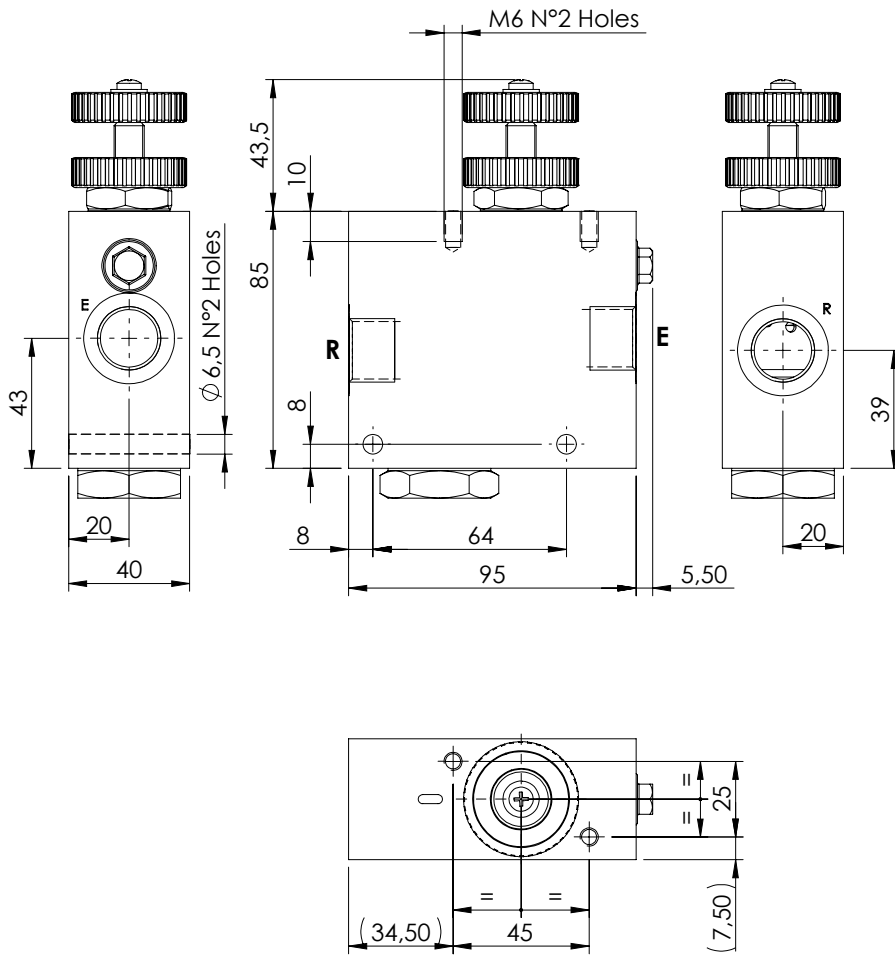
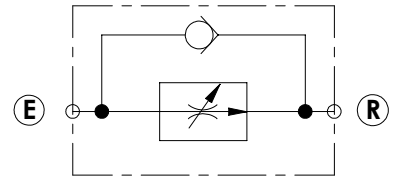
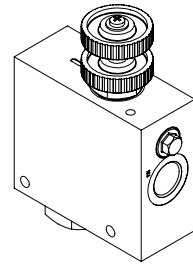


FLOW REGULATOR

MFST-055-VVTR

**2 WAYS COMPENSATED
WITH CHECK VALVE**



SPECIFICATIONS

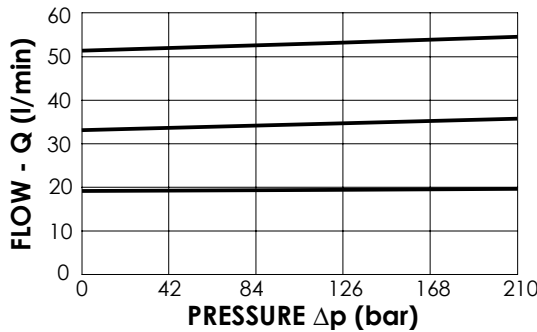
Max. operating pressure:	210 bar
Rated flow:	55 l/min
Manifold:	Aluminium
Weight:	1,06 kg

ADJUSTMENT OPTIONS



NOTES

Regulating: FINE



ORDERING CODES

Quick code	Description	Main ports size	Max. inlet flow (l/min)	Adjustment options
MF000131	MFST-055-VVTR-55-G12-N210	G 1/2"	55	Handknob and locknut
MF000375	MFST-055-VHTR-55-G12-N210	G 1/2"	55	Screw and locknut
MF000146	MFST-055-VMTR-55-G12-N210	G 1/2"	55	Graduated handknob